

The Waterford Estate



Driveway & Landscaping not included.
Not actual home, but similar plan.

\$749,900*

October Occupancy

Blue Stem (Lot 111)
1940 N Creek Drive
Grafton, WI 53024

- 3 Bedrooms
- 2 Bathrooms
- 2,264 SF
- 3 Car Garage

Directions:

From I-43: Take exit 92 for Hwy 60. Head west on Hwy 60. Left on Cheyenne Ave into the Blue Stem neighborhood. Left on Teton Trail. Right on North Creek Drive.

*Price subject to change without notice.



KITCHEN FEATURES

Designer kitchen with staggered painted maple cabinets with crown molding, soft close doors/drawers, roll trays & built-in look refrigerator panel
Quartz countertops, tile backsplash, & island w/ snack bar
Large corner pantry with melamine shelving
GE® designer kitchen appliance package w/built-in microwave, dishwasher, slide-in gas range, chimney hood & French door refrigerator in slate finish

MAIN LEVEL FEATURES

Mohawk® wood laminate flooring in kitchen, nook, great room, foyer, mudroom, laundry room & hallways
11' ceiling height in great room, foyer & office
Gas fireplace w/ stacked stone & boxed mantel w/ returns
Office w/ glass double doors
Separate laundry & mudroom
Built-in boot bench in mudroom
Cabinet, countertop/folding table, GE washer & dryer & pocket door in laundry room w/ drop in utility sink
Additional linen closet
Window above shower in bath 2
Casing & jamb for select windows & patio door
4 1/4" base & 3 1/2" casing & solid core swing doors
Orange peel drywall finish

MASTER SUITE FEATURES

Box up ceiling
His & hers vanities w/ drawer in between
5'x3.5' walk-in tiled to ceiling shower w/swing glass door, & wall-to-wall tile shelf
Tile flooring

LOWER LEVEL FEATURES

Finished basement staircase w/ half wall
Lookout exposure
Basement bathroom plumbing rough in

ADDITIONAL FEATURES

3' bump to bed 2, bed 3 and bath 2
Designer siding & natural stone
Insulated garage doors & ultra quiet garage door opener w/ camera
AZEK® deck
Solid core doors
2x6 Construction
Pella® Windows
Moen® Faucets & Kohler® Toilets
Starved Rock® Cabinets
Maxim® Light Fixtures
Builder Warranty Included
Focus on Energy Certified

[Floor Plan on Other Side →](#)

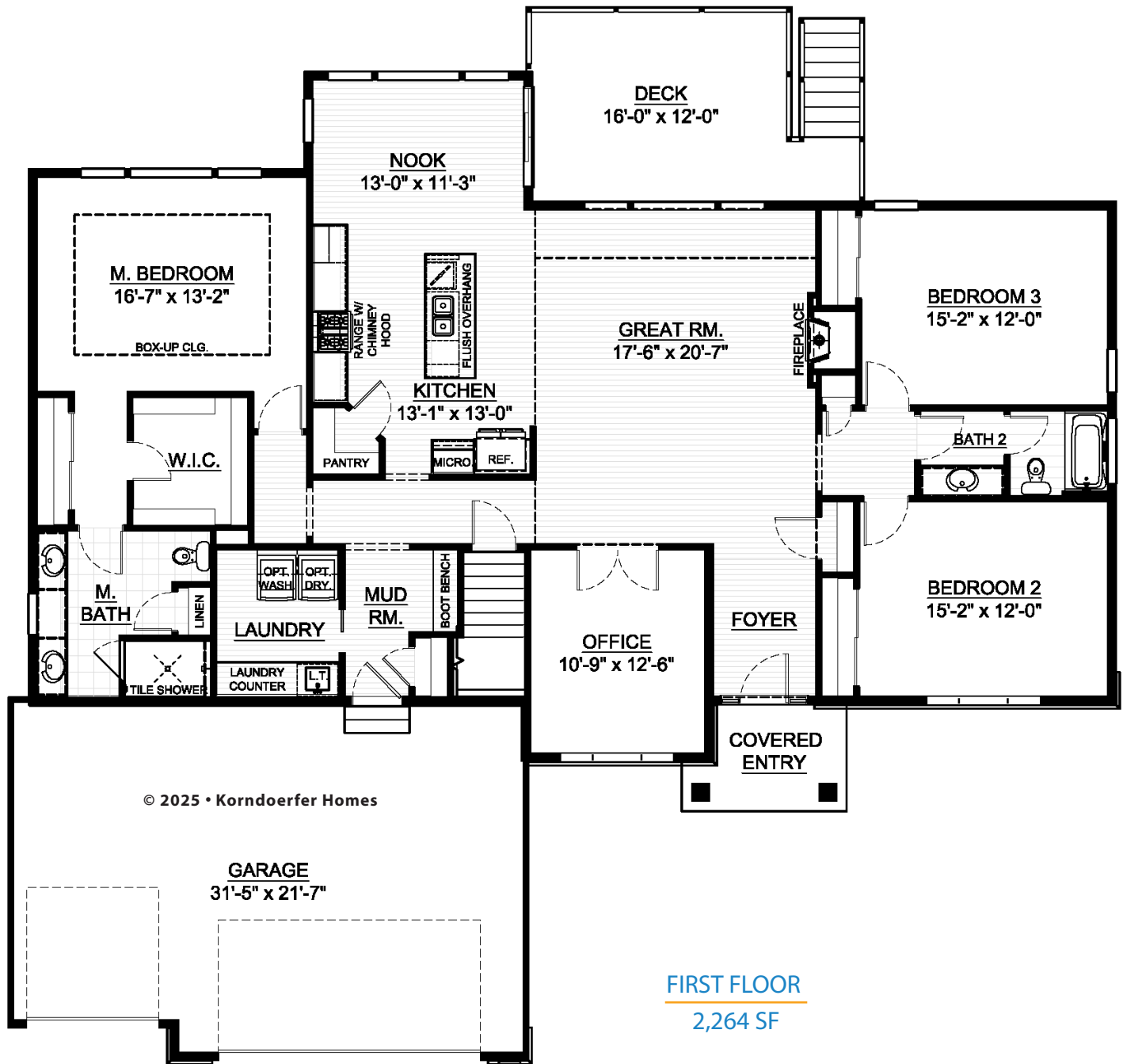


ASK RYAN!

Online Sales Consultant
262-884-9551
sales@korndoerferhomes.com



The Waterford Estate Floor Plan



ASK RYAN!

Online Sales Consultant
262-884-9551
sales@korndorferhomes.com

