



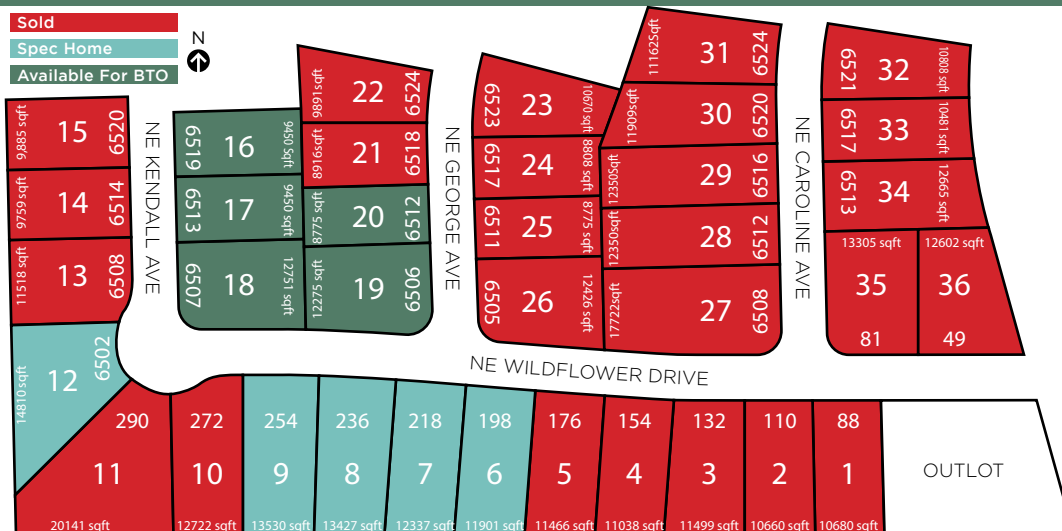
SUNRISE POINTE

PLEASANT HILL

PLAT 6

www.jerryshomes.com

Sold
Spec Home
Available For BTO



LOT #	ADDRESS	TYPE	LOT SQFT	PRICE	STYLE
6	198 NE Wildflower Dr	STD/L	11,901	\$TBD	DUKE EXP
7	218 NE Wildflower Dr	STD/L	12,337	\$TBD	COPELAND
8	236 NE Wildflower Dr	STD/L	13,427	\$TBD	CEDAR
9	254 NE Wildflower Dr	STD/L	13,530	\$374,990	CASCADE II
12	6502 NE Kendall Ave	STD/R	14,810	\$339,990	CALDWELL

LOT #	ADDRESS	TYPE	LOT SQFT	PRICE
16	6519 NE Kendall Ave	DayL/R	9,450	\$74,000
17	6513 NE Kendall Ave	DayL/L	9,450	\$74,000
18	6507 NE Kendall Ave	DayL/L	12,751	\$71,000
19	6506 NE George Ave	STD/R	12,275	\$70,000
20	6512 NE George Ave	STD/R	8,775	\$70,000

School District
Southeast Polk Community

Nearest Schools
Four Mile Elementary
Spring Creek 6th Grade Center
Southeast Polk Junior High School
Southeast Polk High School

Nearest Grocery
2 miles to Fareway, 4 miles to Hy-Vee, 5 miles to Target
5 miles to Walmart

Nearest Gym
2 miles to Snap Fitness
3 miles to Anytime Fitness
3 miles to Orange Planet

Nearest Shopping Center
7 miles to Outlets of Des Moines, 15 miles to Valley West Mall

Home Improvement Store
5 miles to Lowe's
6 miles to Menards

Tucked away in a quiet little neighborhood in Pleasant Hill, Sunrise Pointe is a hidden gem of a community found just east of the HWY 5 bypass. Off the beaten path, yet just minutes from access to the entire metro area. Excellent South East Polk schools with Four Mile Elementary, a community of neighbors who become friends, small town feel with plenty of amenities including parks, library, trails & local restaurants.

Dianna Elder | 641.780.8804 | dianna@teamelder.com



Listing information subject to change without notice.

#SINCE1957

Our history builds your future.



Daylight lots are an additional \$4,000 above listing price. Walkout lots are an additional \$7,000 above listing price.