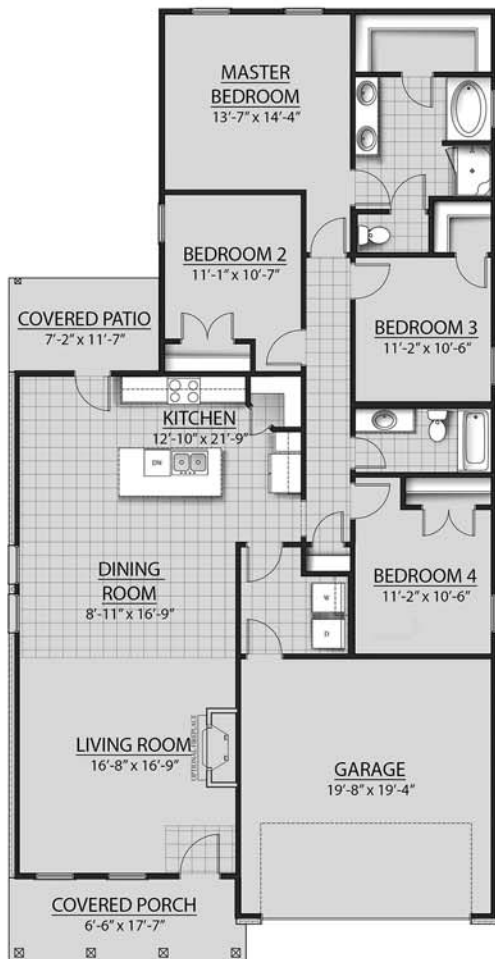


THE OXFORD B V PLAN



Living Area

1875 Square Feet

Total Area

2493 Square Feet

Features

- Open Floor Plan
- Four Bedrooms, Two Bathrooms
- Two Car Garage
- Covered Patio
- Brick, Stucco and Siding Exterior
- Double Master Vanity
- Walk-In Master Closet
- Garden Master Tub
- Separate Master Shower



Floor plans and elevations are subject to change without notice. Elevations and renderings are artistic conceptions and may not accurately depict home styles. Windows, doors and plan configurations are subject to change per elevation. Information contained in this flyer is subject to errors, omissions, changes, withdrawals and prior sales without notice.