



PROVIDENCE  
HOMES



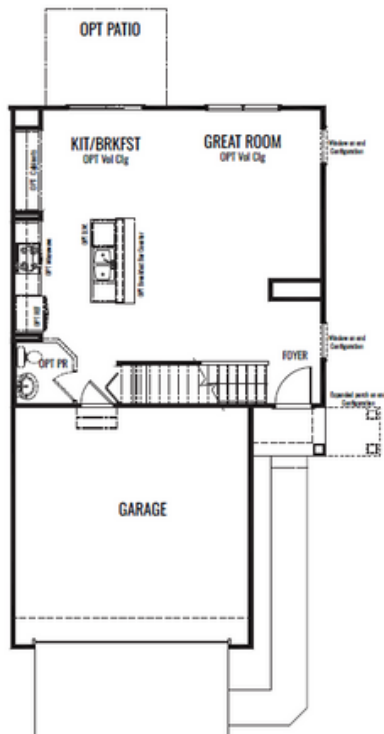
Elevation A



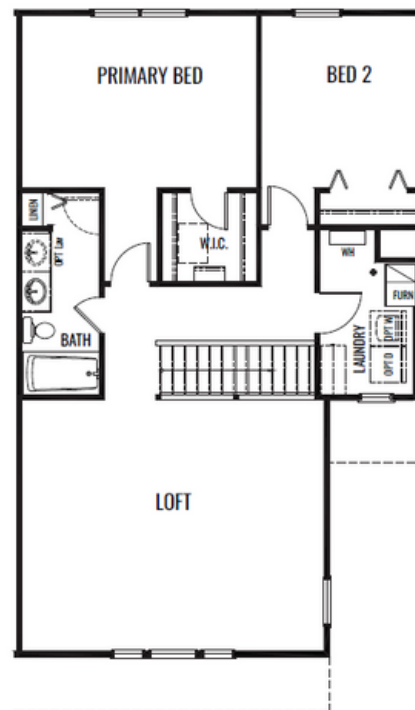
Elevation B

## The Fenwick

1596 Sq. Ft. | 2 BDRM + Loft 1.0 BA



FIRST FLOOR



SECOND FLOOR

## Stone Mill - Townhomes

Artist's renderings may vary in precise detail as compared to actual construction. All dimensions are approximate. Providence Real Estate Development, LLC. DBA Providence Homes in an effort to improve its product, reserves the right to make changes without notice. Actual home may be built as shown or reversed as dictated by engineered site plan. © Copyright 2025, Providence Real Estate Development, LLC.



PROVIDENCE  
HOMES



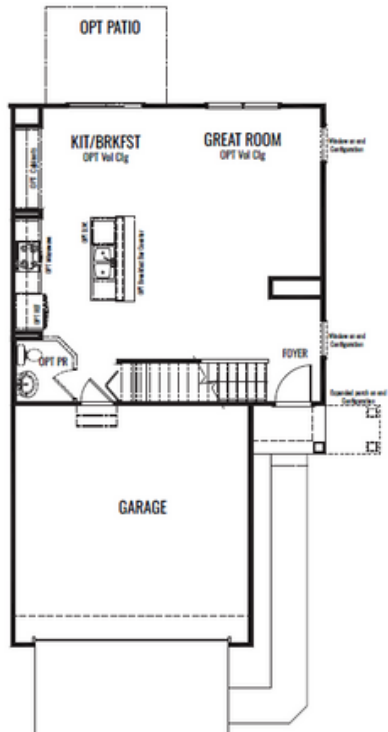
Elevation A



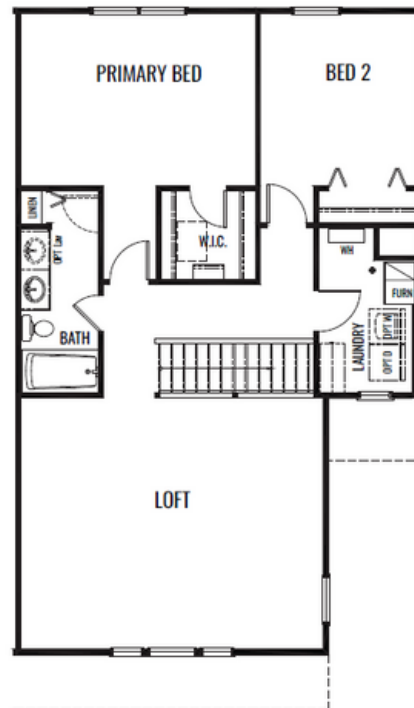
Elevation B

## The Fenwick End Condition

1596 Sq. Ft. | 2 BDRM + Loft 1.0 BA



FIRST FLOOR



SECOND FLOOR

## Stone Mill - Townhomes

Artist's renderings may vary in precise detail as compared to actual construction. All dimensions are approximate. Providence Real Estate Development, LLC. DBA Providence Homes in an effort to improve its product, reserves the right to make changes without notice. Actual home may be built as shown or reversed as dictated by engineered site plan. © Copyright 2025, Providence Real Estate Development, LLC.

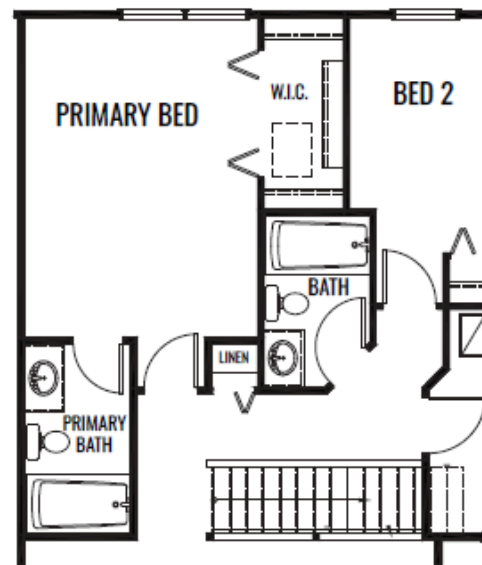
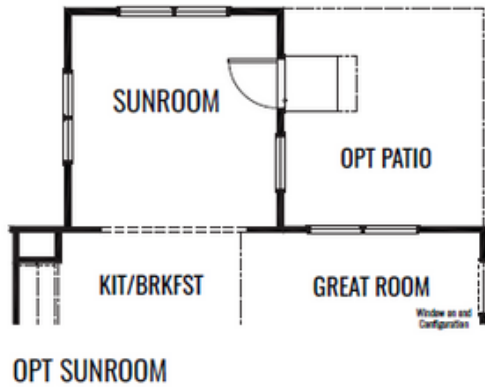
The floor plan for the second floor features three bedrooms: BED 2 (top right), BED 3 (top left), and the PRIMARY BED (bottom center). There are two bathrooms: a BATH (top center) and a PRIMARY BATH (middle left). A central linen closet (LINEN) is located near the stairs. The laundry room (LAUNDRY) is situated on the right side, containing a washer/dryer unit (W/D), a storage unit (STOR), and a linen closet (LINEN). A walk-in closet (W.I.C.) is located near the stairs. The plan also includes a closet (CL) and a linen closet (LINEN) near the PRIMARY BED. The overall layout is designed for a comfortable and functional living space.

The second floor plan features three bedrooms: a large Primary Bed at the front, and two smaller bedrooms (Bed 2 and Bed 3) at the rear. A Primary Bath is located between Bed 2 and the Primary Bed. The plan also includes a Linen closet, a central staircase, and three Walk-In Closets (W.I.C.).

Artist's renderings may vary in precise detail as compared to actual construction. All dimensions are approximate. Providence Real Estate Development, LLC. DBA Providence Homes in an effort to improve its product, reserves the right to make changes without notice. Actual home may be built as shown or reversed as dictated by engineered site plan. © Copyright 2025, Providence Real Estate Development, LLC.

# The Fenwick

## OPTIONS



OPT PRIVATE BATH

## Stone Mill - Townhomes

Artist's renderings may vary in precise detail as compared to actual construction. All dimensions are approximate. Providence Real Estate Development, LLC. DBA Providence Homes in an effort to improve its product, reserves the right to make changes without notice. Actual home may be built as shown or reversed as dictated by engineered site plan. © Copyright 2025, Providence Real Estate Development, LLC.