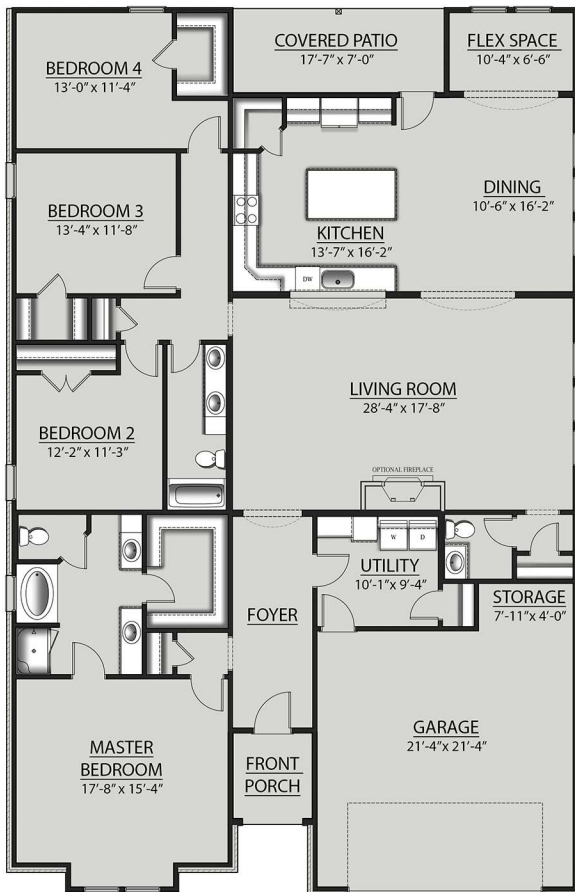


THE SANSA B IV PLAN



Living Area

2782 Square Feet

Total Area

3493 Square Feet

Exterior Features

- Brick, Stucco & Siding Exterior
- Covered Rear Patio
- Two Car Garage with Storage

Interior Features

- Open Floor Plan
- Four Bedrooms, Two and a Half Bathrooms
- Recessed Can Lighting in Kitchen, Dining, Living Room & Flex Space
- Walk-In Pantry
- Flex Space
- Separate Master Vanities
- Separate Master Shower
- Garden Tub
- Walk-In Master Closet



Floor plans and elevations are subject to change without notice. Elevations and renderings are artistic conceptions and may not accurately depict home styles. Characteristics, including but not limited to windows, doors, plan configurations and orientations are subject to change per home site. Information contained in this flyer is subject to errors, omissions, changes, withdrawals and prior sales without notice.