

REECE HOMES

2032 PEBBLE BEND DRIVE



PEBBLE CREEK NEIGHBORHOOD

4 BDRM | 4 BATH | 3150 SF

The “Grayson” plan is where functionality and flow pair with beautiful design. This spacious home with a separate game room features an open, yet defined layout with an abundance of natural light. The elegant kitchen is the heart of the home, featuring a large eat in island that can comfortably seat six, double height and extra deep cabinets for ample storage, fir beams, quartz countertops, and wood flooring. Relax in the spacious master suite and enjoy the luxury of a garden tub and walk-in shower.

FEATURES:

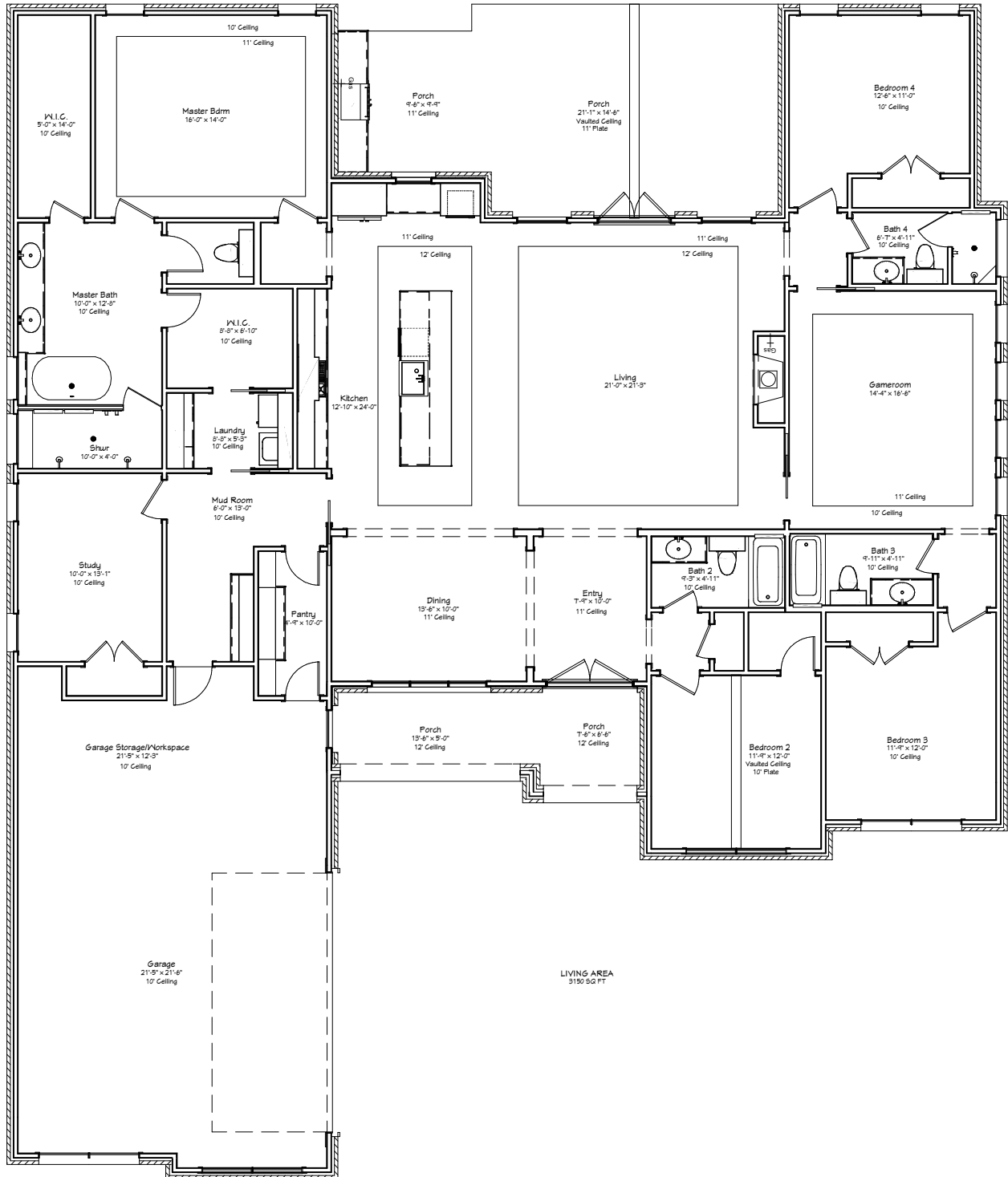
Custom Cabinetry | Quartz & Granite Countertops
Hardwood Flooring | Stainless Appliances | Custom Lighting

Come Make Our House, Your Home.



Reece Homes
979-635-4800
info@reece-homes.com

2032 PEBBLE BEND DRIVE



4 BDRM | 4 BATH | 3150 SF

WWW.REECE-HOMES.COM