

WOODMONT B2



TWO-STORY | 4-5 BEDROOMS | 3.5-4.5 BATHROOMS | 3,309-3,660 SQ FT | ELEVATION B2



2-CAR FRONT ENTRY GARAGE



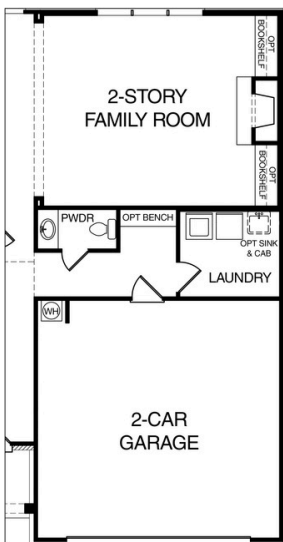
3-CAR FRONT ENTRY GARAGE



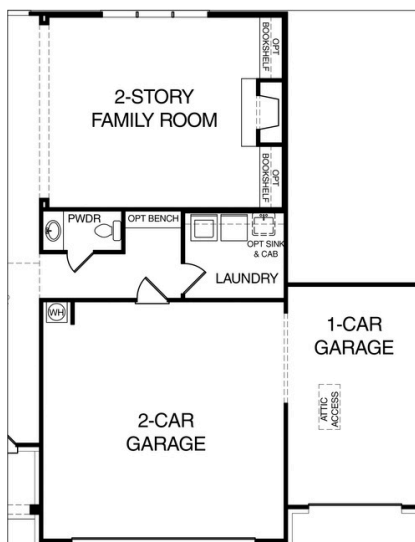
2-CAR SIDE ENTRY GARAGE



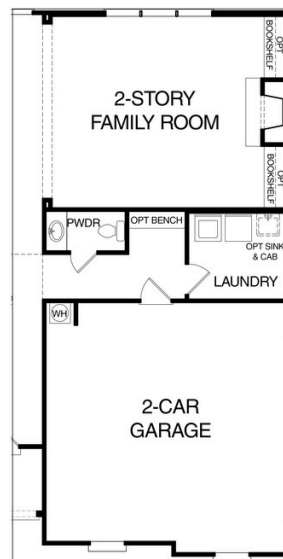
3-CAR SIDE ENTRY GARAGE



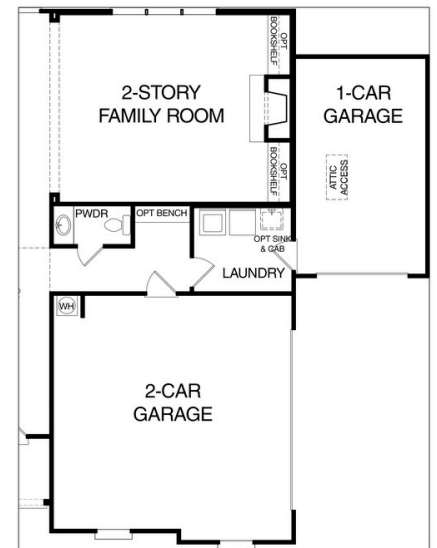
2-CAR FRONT ENTRY GARAGE



3-CAR FRONT ENTRY GARAGE



2-CAR SIDE ENTRY GARAGE



3-CAR SIDE ENTRY GARAGE

RENDERINGS AND PLANS ARE FOR ILLUSTRATIVE PURPOSES ONLY. THE SPECIFIC FEATURES, OPTIONS, AND SELECTIONS FOR THIS HOME ARE IDENTIFIED IN EXHIBIT G, WHICH GOVERNS WHAT IS INCLUDED. PLANS, ELEVATIONS, DIMENSIONS, AND SQUARE FOOTAGE ARE APPROXIMATE AND SUBJECT TO CHANGE WITHOUT NOTICE. 03.17.2026

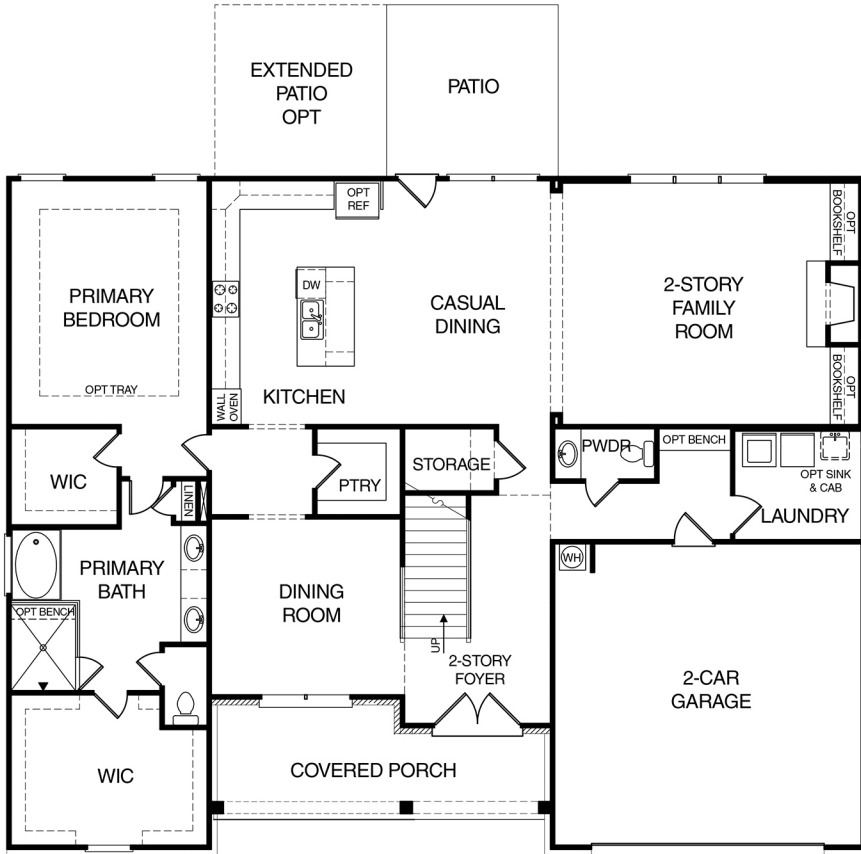
WOODMONT B



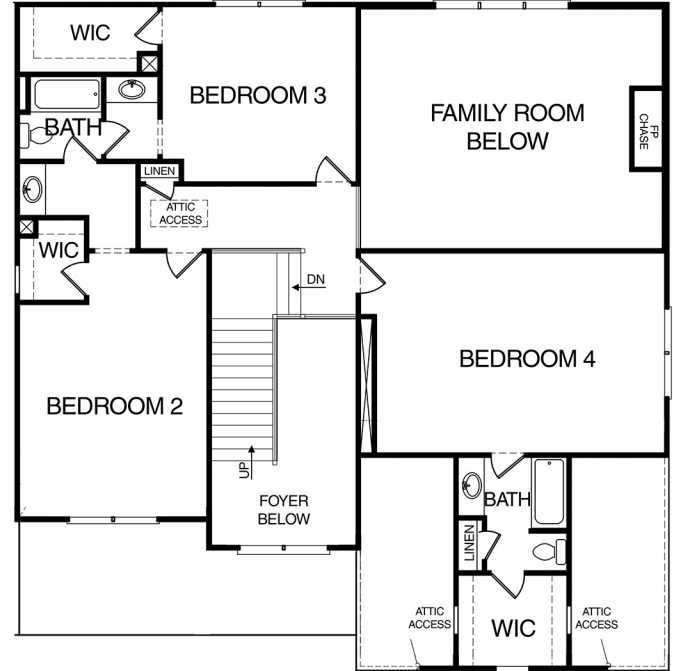
TWO-STORY | 4-5 BEDROOMS | 3.5-4.5 BATHROOMS | 3,309-3660 SQ FT | FLOOR PLAN

- FIRST FLOOR -

- SECOND FLOOR -



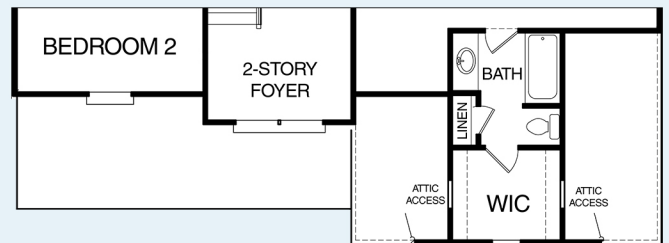
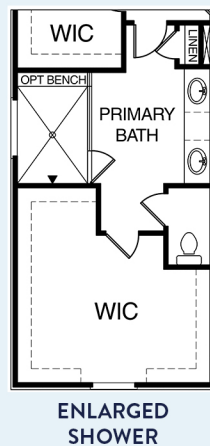
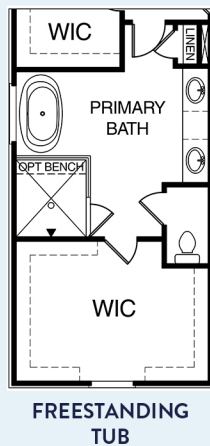
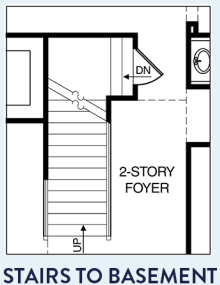
ELEVATION B, B1, B2, B3



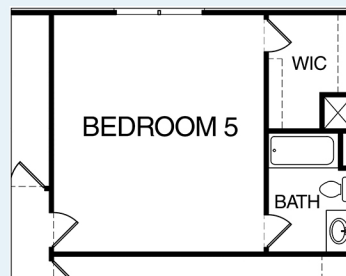
ELEVATION B, B3

- FIRST FLOOR OPTIONS -

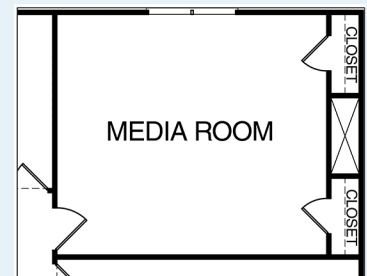
- SECOND FLOOR OPTIONS -



B1, B2 PARTIAL FLOOR PLAN



5TH BEDROOM ILO
2-STORY FAMILY ROOM



MEDIA ROOM ILO
2-STORY FAMILY ROOM