

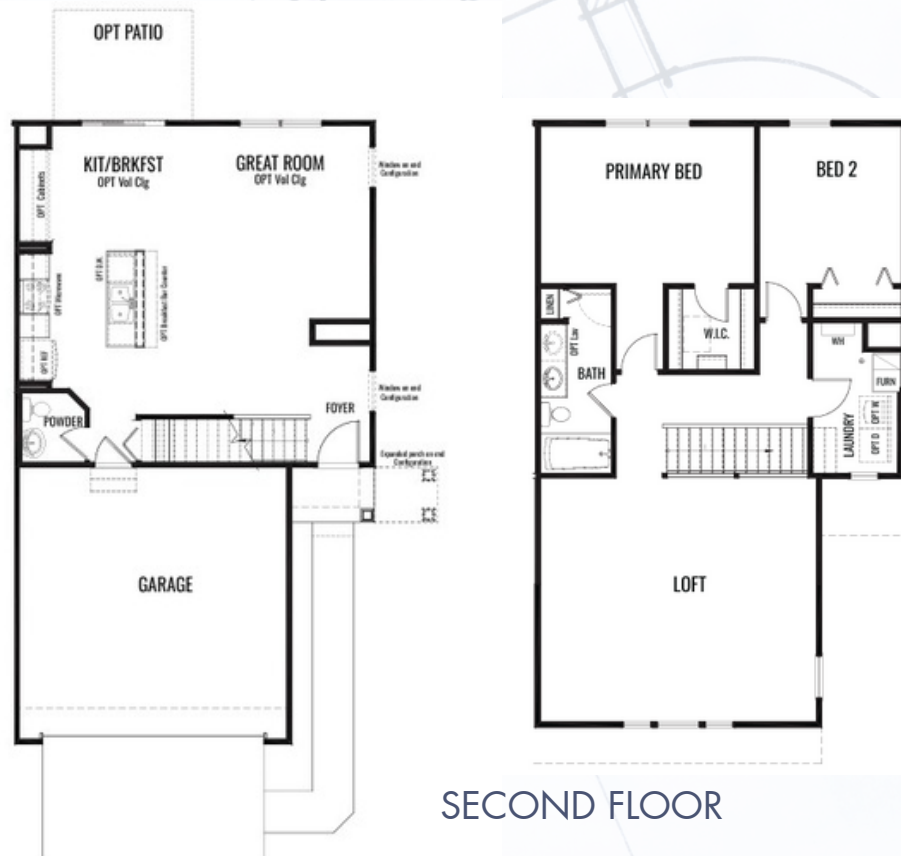


PROVIDENCE  
HOMES



## The Grayson

1616 Sq. Ft. | 2 BDRM + Loft 1.5 BA



FIRST FLOOR

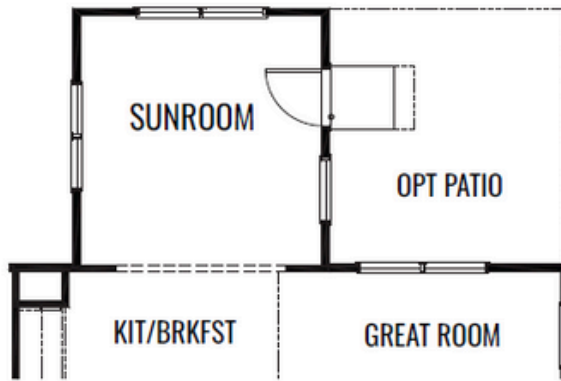
SECOND FLOOR

## Savannah Cove - Paired Villas

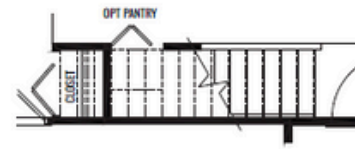
Artist's renderings may vary in precise detail as compared to actual construction. All dimensions are approximate. Providence Real Estate Development, LLC. DBA Providence Homes in an effort to improve its product, reserves the right to make changes without notice. Actual home may be built as shown or reversed as dictated by engineered site plan. © Copyright 2025, Providence Real Estate Development, LLC.

# The Grayson

## OPTIONS



OPT SUNROOM



OPT CLOSET



OPT BASEMENT



OPT GRAND PRIVATE BATH

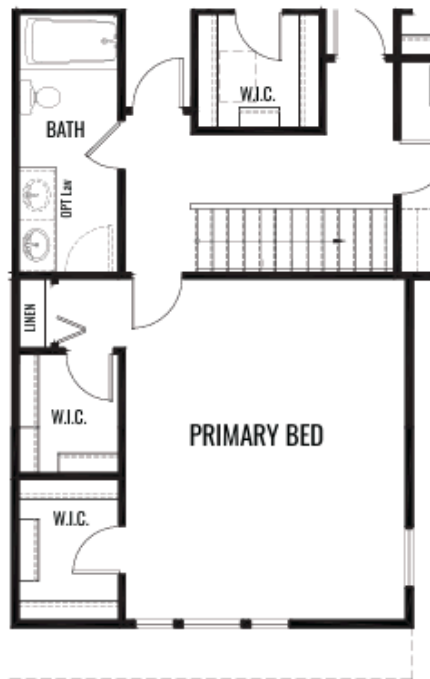
## Savannah Cove - Paired Villas

Artist's renderings may vary in precise detail as compared to actual construction. All dimensions are approximate. Providence Real Estate Development, LLC. DBA Providence Homes in an effort to improve its product, reserves the right to make changes without notice. Actual home may be built as shown or reversed as dictated by engineered site plan. © Copyright 2025, Providence Real Estate Development, LLC.

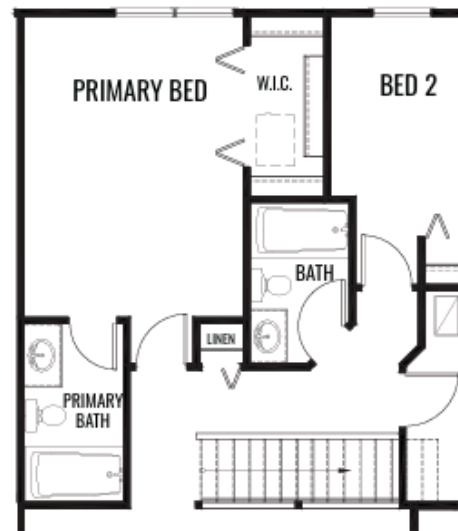


# The Grayson

## OPTIONS



OPT GRAND PRIMARY BEDROOM



OPT PRIVATE BATH

## Savannah Cove - Paired Villas

Artist's renderings may vary in precise detail as compared to actual construction. All dimensions are approximate. Providence Real Estate Development, LLC. DBA Providence Homes in an effort to improve its product, reserves the right to make changes without notice. Actual home may be built as shown or reversed as dictated by engineered site plan. © Copyright 2025, Providence Real Estate Development, LLC.