



SANGLIN
HOMES



Sheppard's Place

Waxahachie, TX

2417 Rams Horn Drive

2,183

SQUARE FEET

4

BEDROOMS

3

BATHROOMS

2

GARAGE

\$484,900

Was \$497,900

Sommerset

- Open Floor Plan
- Fireplace
- Large Kitchen Island
- Oven Tower
- Freestanding Bathtub
- Study
- Bench with Storage
- Covered Patio

Jorge Esquivel

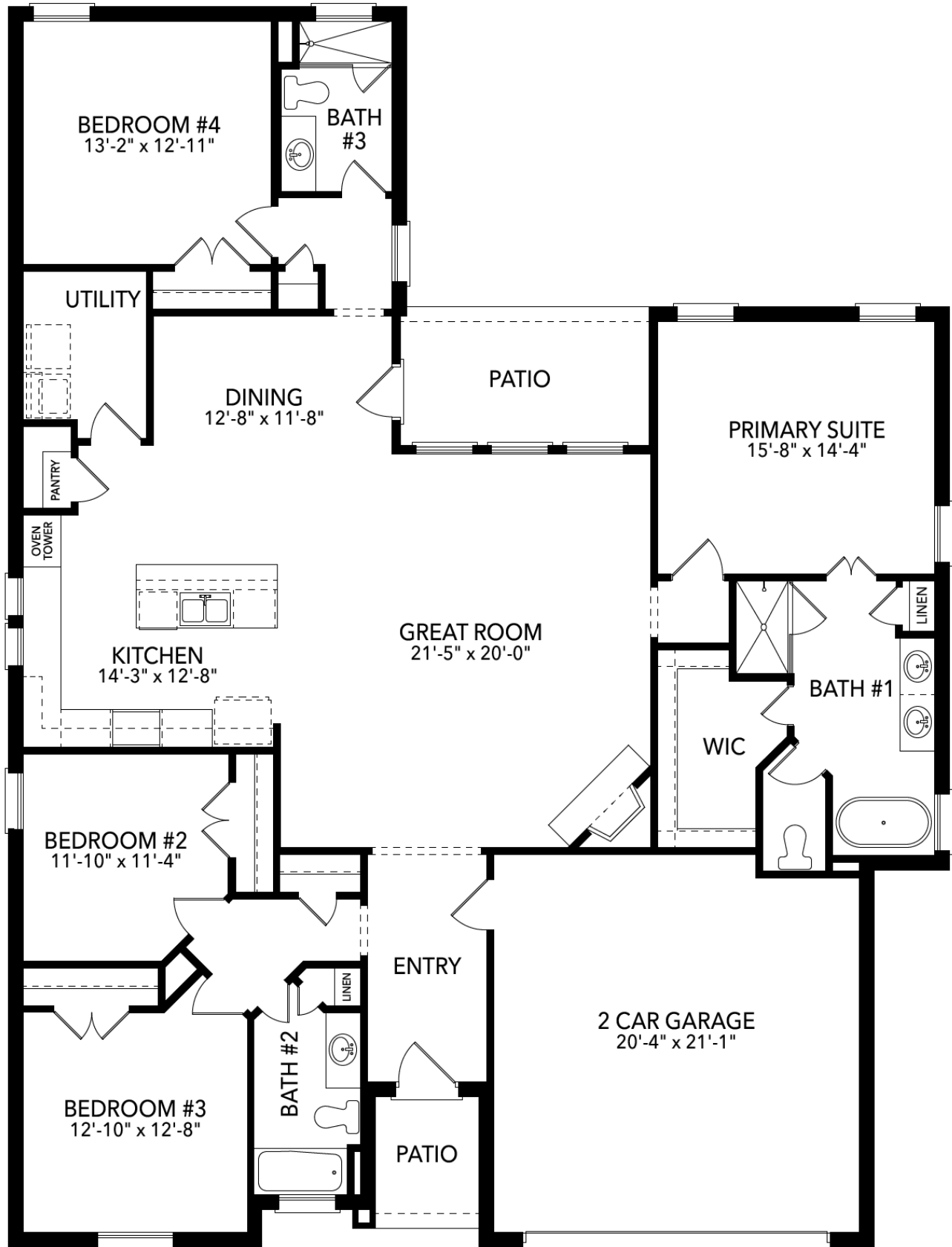
817-562-9218

JorgeE@SandlinHomes.com

2225 Sheppards Lane
Waxahachie, TX 75167

www.SandlinHomes.com





First Floor