

# Cambridge

Approx. 2,440 Total Square Feet | Reverse 1.5 Story



Modern Farmhouse



Heritage



Farmhouse

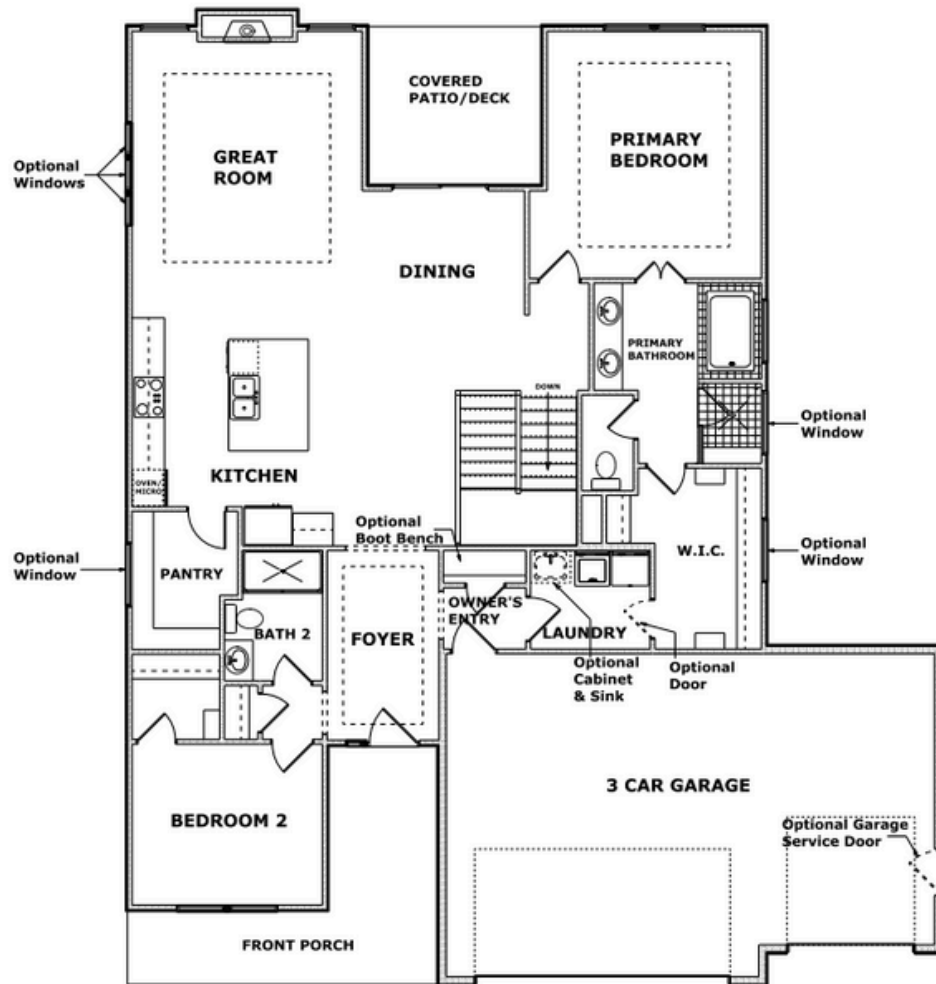


Craftsman

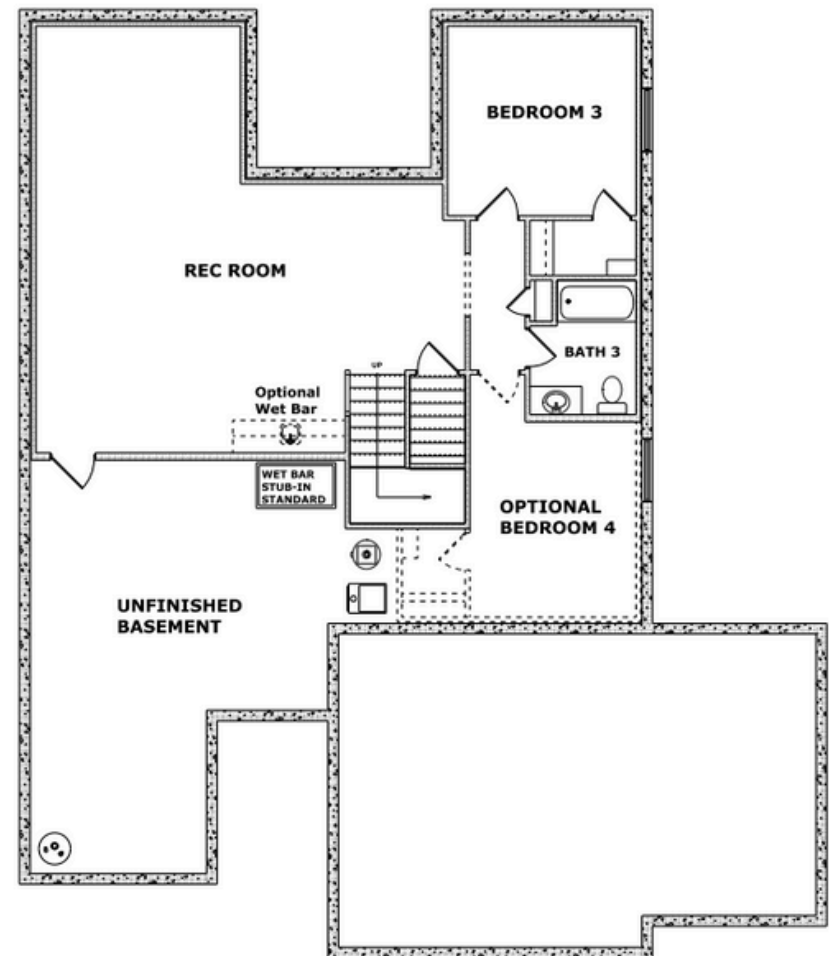
# Cambridge

Approx. 2,440 Total Square Feet | Reverse 1.5 Story

## MAIN LEVEL



## LOWER LEVEL



# Cambridge

includes the following:

## STANDARD FEATURES

### INTERIOR FEATURES

- Wide plank premium laminate flooring on main level traffic areas
- Gas fireplace with blower and battery back-up
- Approx. 10' ceilings on first floor (Plan specific)
- Tray ceiling in foyer, great room, and primary bedroom
- Approx. 9' basement walls
- TV HDMI chase at fireplace
- Quartz countertops
- Tiled primary bath floor and shower
- Tile floors in all bathrooms
- Solid surface enameled shelving in all closets & pantry
- Ceiling fans in great room and primary bedroom
- Ceiling fan pre-wire and switch in all bedrooms
- Laundry room cabinet with hanging rod and shelf
- High traffic stair carpet
- 8 lb. carpet pad
- Sherwin-Williams® interior/exterior paint
- 6' 8" interior doors
- Straight black iron spindles on staircase
- Plumbing stub for future wet bar
- CAT 6 outlets in Great Room fireplace, primary bedroom & lower rec room
- Wood trimmed mirror frames in primary bathroom and bath 2
- Wood enameled shelving in all closets & pantry

### KITCHEN

- Built-in GE® stainless steel appliances:
  - Gas cooktop, built-in oven, and microwave, upgraded dishwasher with SS interior
- Custom site-finished wood cabinetry with soft close drawers/doors
- Choice of enameled or stained cabinetry
- Tile backsplash
- Trash/recycle pull-out with bins
- Sleek stainless undermount kitchen sink
- Oversized island with storage cabinets
- USB outlet

### EXTERIOR FEATURES

- 8' tall two-panel front door
- 3 car garage
- 8' tall garage doors (non-insulated)
- Wi-Fi enabled garage door openers with (1) keypad
- Fully sodded yard with front landscaping
- Irrigation system with shrub zone
- Recessed soffit lighting
- Covered rear patio with fan & light

### ENERGY EFFICIENCY

- 95% high efficiency gas furnace
- 14 SEER air conditioner
- Programmable thermostat
- Pella® vinyl Low-E thermal windows
- Passive radon mitigation system
- LED light bulbs throughout
- Whole house humidifier

### WARRANTY

*Your new home will be enrolled in the 2-10 Home Buyers Warranty, a nationwide program. This includes:*

- 1 Year workmanship
- 2 Year systems
- 10 Year structural



BE INSPIRED. BUILD INSPIRED. LIVE INSPIRED.

\*\*Standard Features are subject to change without notice and could vary by floor plan, lot, and community.