



THE ALDERWOOD

2,109 SQ.FT.

Introducing The Alderwood, not just a house but a home. Upon entry, a few steps in and you walk into a spacious great room with optional built-down coffered ceilings, fireplace and cabinets. From here we go past the dining area and into the kitchen with a large centered island, walk-in pantry and access to the backyard or the 2-car garage.

Up the stairs is two bedrooms separated by a full bath, and the master suite with a soaking tub and large walk-in closet. Across the hall is a rec room apt for movie nights or a spare bedroom for guests.

THE ALDERWOOD - 2,109 SQ FT



NOUVEAU



FARMHOUSE



EUROPEAN



FARMHOUSE (WITH STONE)

*Farmhouse elevation may require stone in some communities.
**High Desert Elevation only available in Tri Cities Region.



DID YOU KNOW?



ENERGY STAR NextGen certified homes and apartments meet the most advanced versions of the core ENERGY STAR New Construction program requirements, which means they are **at least 10% more energy-efficient** than homes and apartments built in states that have adopted the 2021 International Energy Conservation Code.

HERS SCORE=47

Ask for more information

Elevation renderings are artists' interpretations and may not reflect actual amenities, paint, driveways, landscaping, fencing, etc. Square footage approximate, may change based upon elevation. Prices, promotions, specifications and availability subject to change or prior sale without notice or obligation. Included plan options vary by community and collection. Due to manufacturing and supply constraints, actual garage door style and model may vary from renderings



THE ALDERWOOD

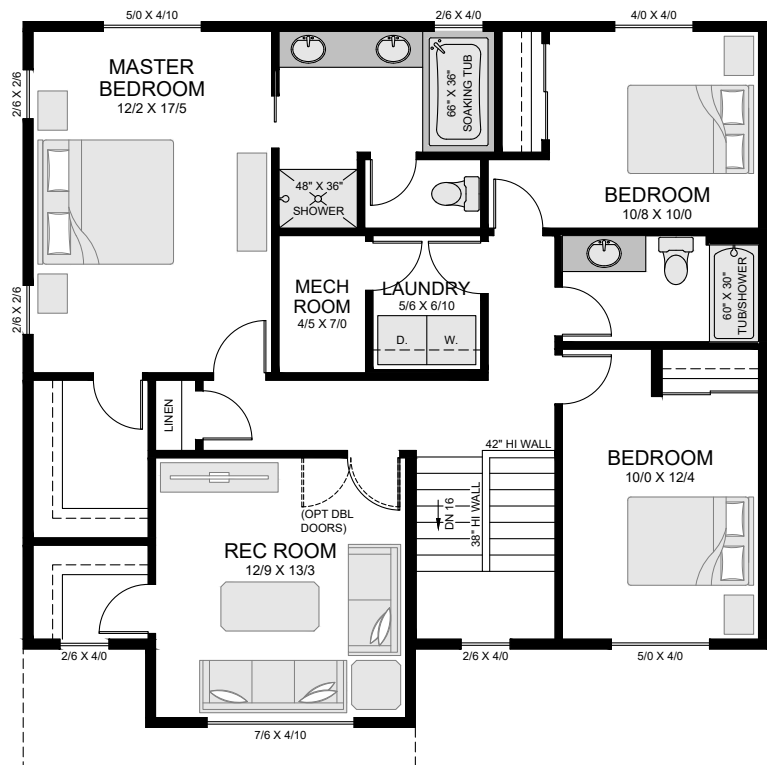
2,109 SQ.FT

3 Bedrooms, Rec Room (Opt. 4th Bedroom), 2.5 Bathrooms,
Laundry Room, 2-Car Garage

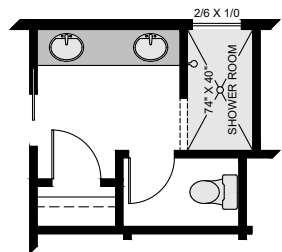


THE ALDERWOOD - 2,109 SQ FT

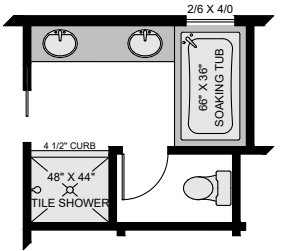
Updated:04/22/24



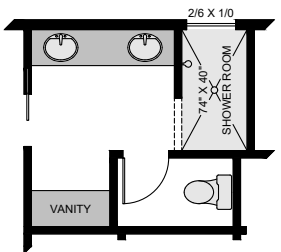
Upper Floor



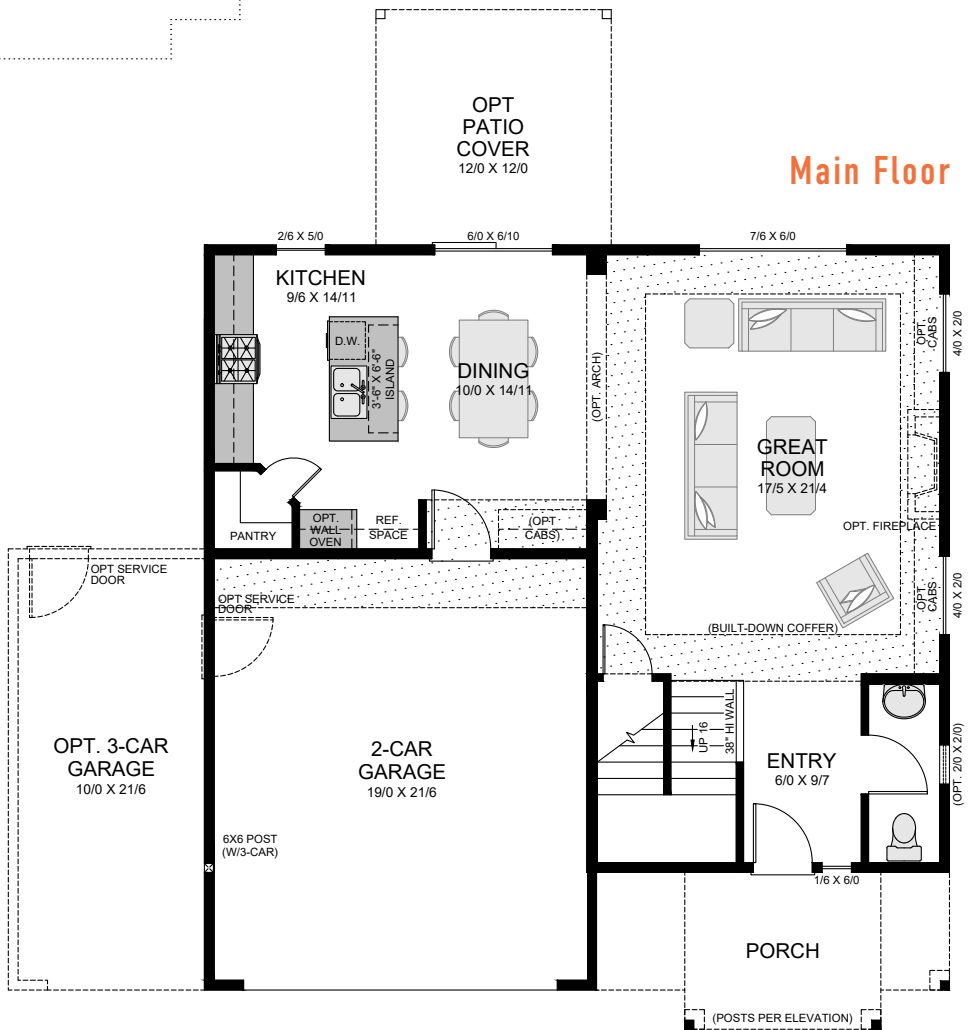
Opt. Walk-in Shower



Opt. Indulgence Suite



Opt. Walk-in Shower with Vanity



Main Floor