



Features

- Nine foot first floor ceiling height
- Open floor plan
- Walk-in kitchen pantry
- Spacious primary bedroom suite with walk-in closet and private bath
- Main floor laundry/mudroom, and powder room
- Second floor linen closet
- Privacy door in main bathroom
- Ten foot by ten foot concrete patio

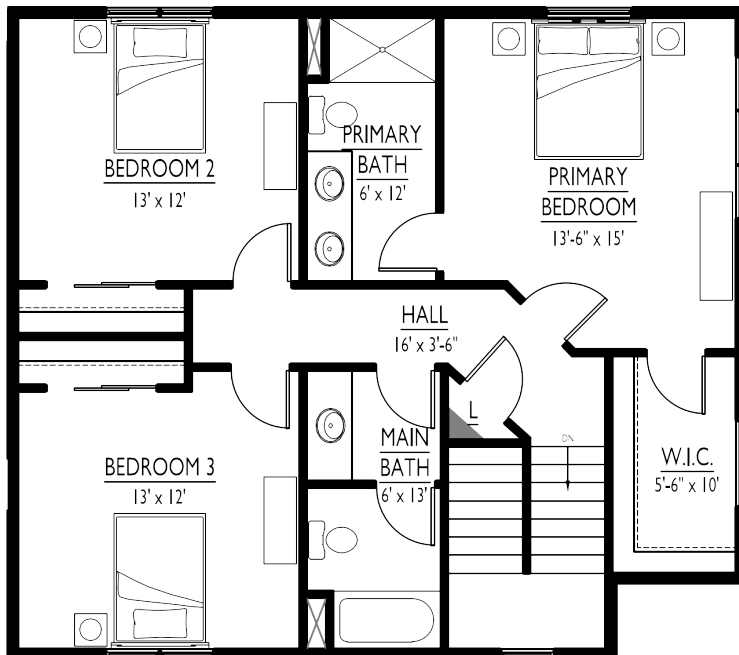
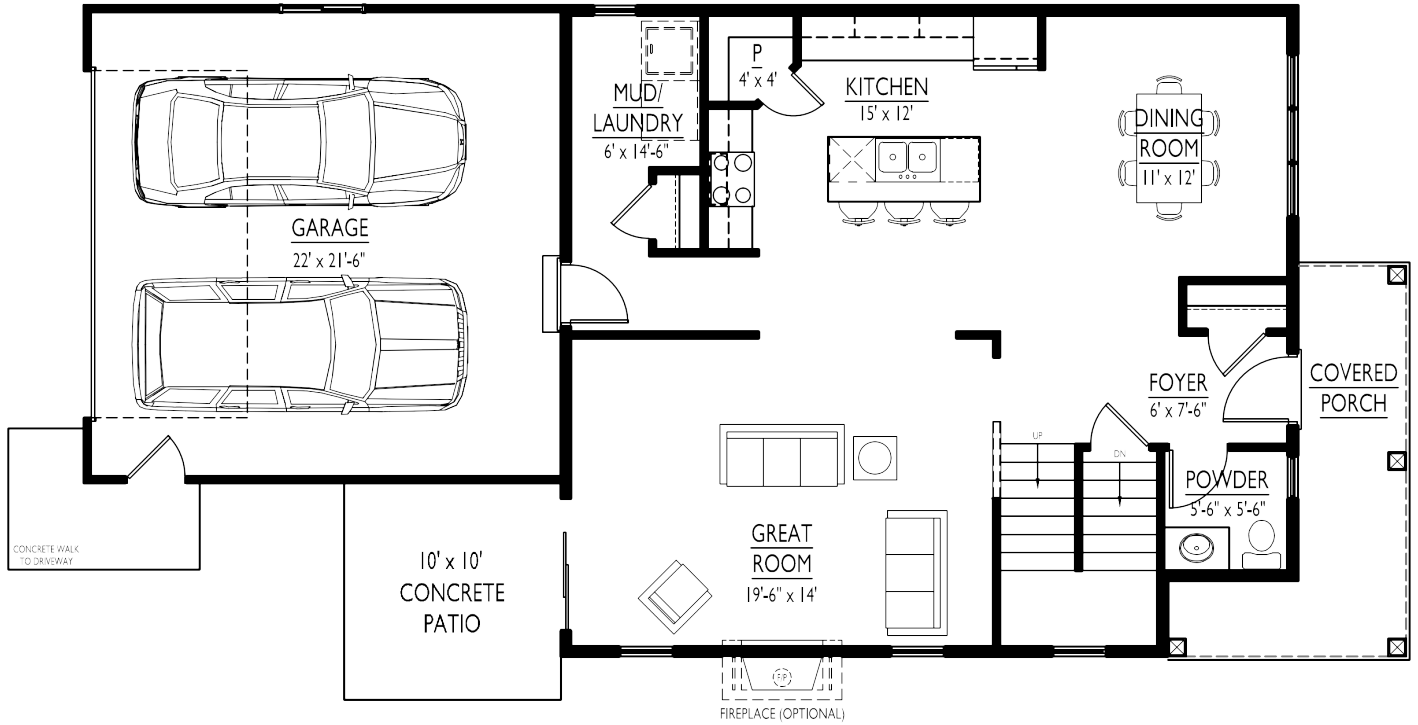
Imagine calming conversations while overlooking the goings-on of the world from the perch of your wrap-around front porch; it's the perfect spot for watching the sun rise and the birds soar! Coupled with all of the amenities a busy family needs, this house offers a unique blend of different spaces for relaxing, interacting, and entertaining.



Options

- Eight foot nine inch basement foundation walls
- Fireplace in great room
- Tile shower in primary bathroom
- Upper wall cabinets in laundry room
- Finished deck or screened porch
- Finished lower level
- Three-car garage

1st Floor
940 SF



2nd Floor
870 SF