

Malvern



Malvern I • Sterling Collection (A)
Artist's Rendering with optional transom and stone water table



Malvern II • Castle Collection (A)
Artist's Rendering with optional transom and stone water table



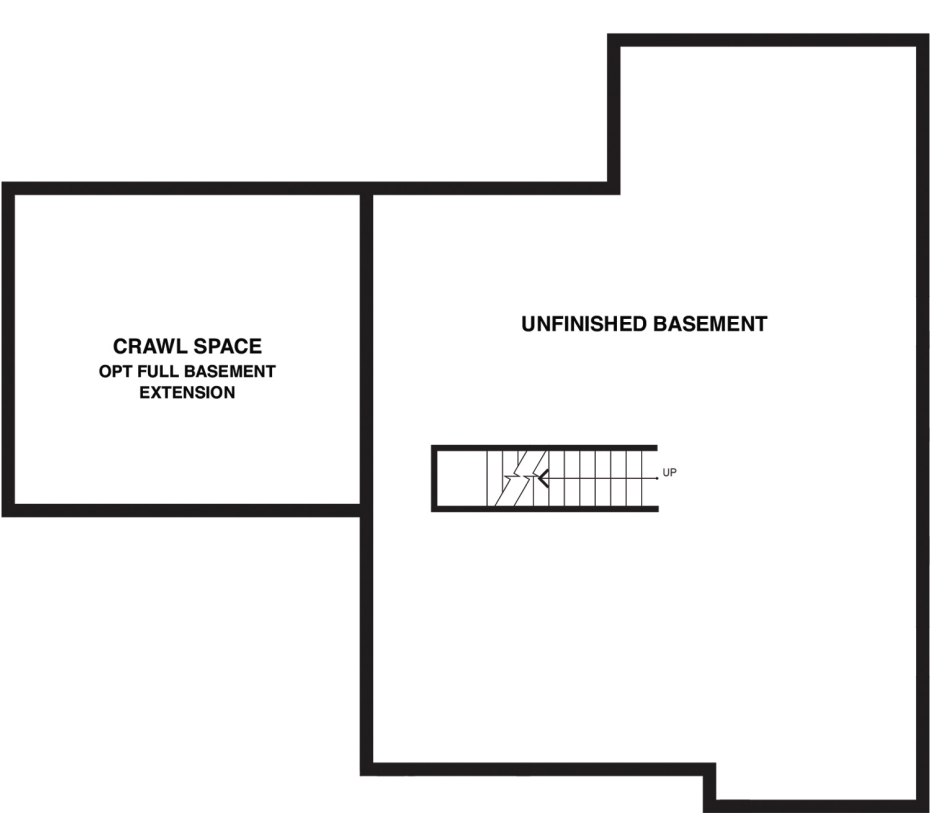
Malvern IV • Snow Collection (B)
Artist's Rendering with optional transom and stone water table



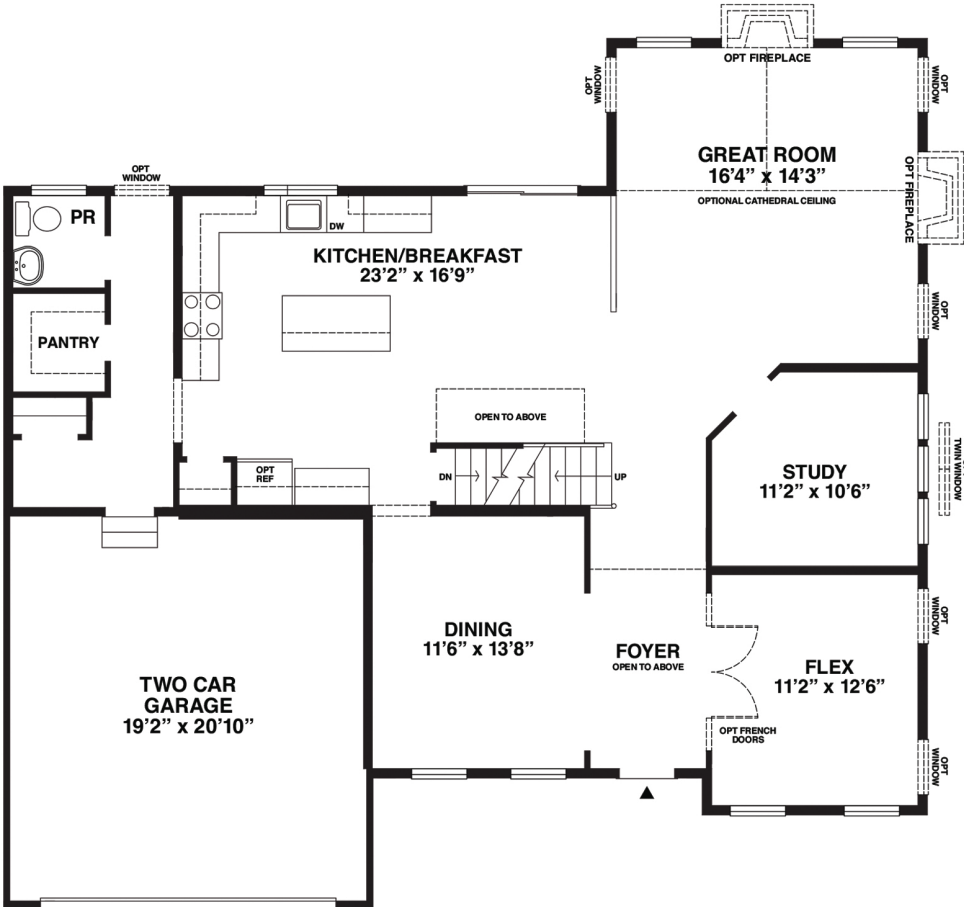
Malvern II • Castle Collection (A)
Artist's Rendering with optional transom and stone water table

Malvern

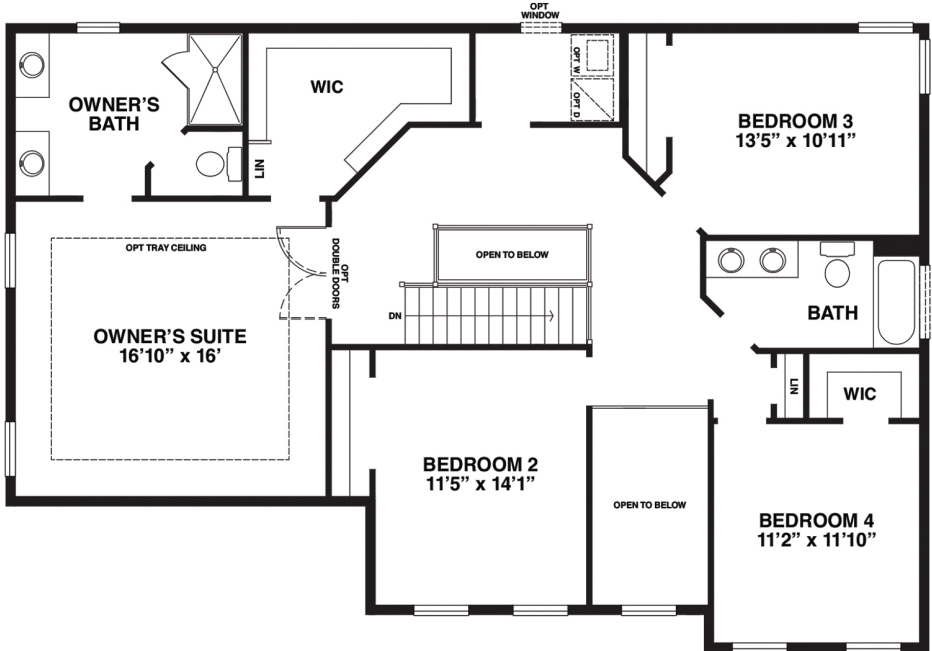
4 Bedrooms | 2½ Baths | 2,892 - 3,310 Sq. Ft.



BASEMENT



FIRST FLOOR



SECOND FLOOR

Dimensions and square footage are approximate and should not be used as a representation of a homes actual size, location or orientation. Renderings represent similar colors, stone and features and may not be exact. Finished square footage calculations for this home were made based on plan dimensions only and may vary from the finished square footage of the home as built. . Please refer to the architectural plans for full details. There is no guarantee that any particular homesite, exterior collection, option or home will be available. The maximum square footage includes all bump-outs and finished basement. Tramsoms and stone water tables are optional. See a Community Specialist for full details. 10/22