

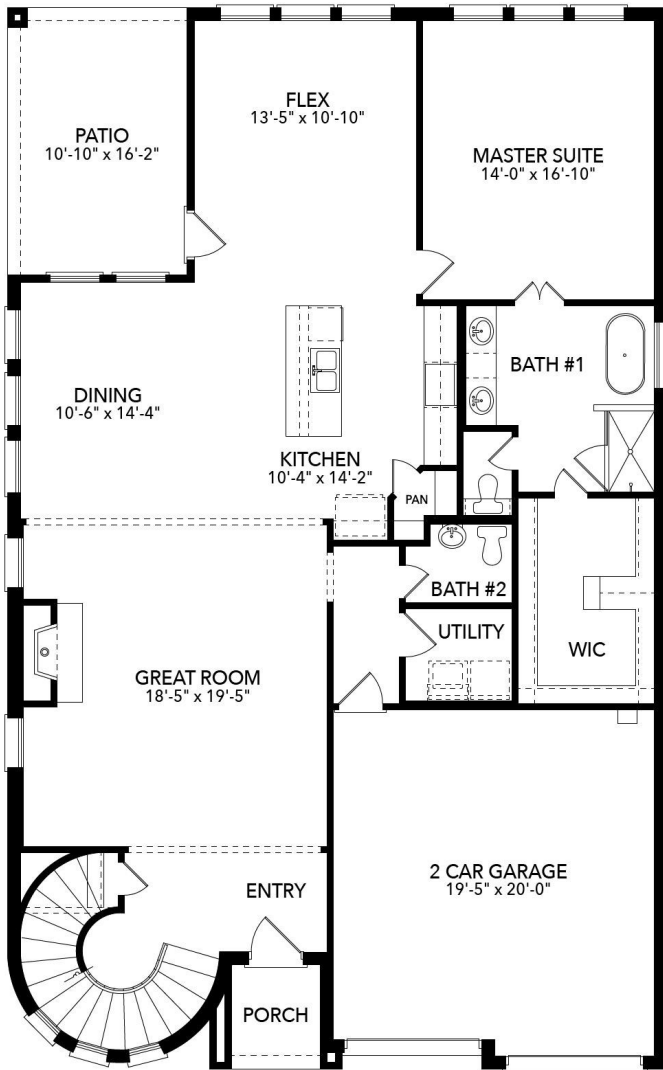
The Dublin

Two Story Home | 3833 sq ft | 4 Bedrooms | 3.5 Bathrooms

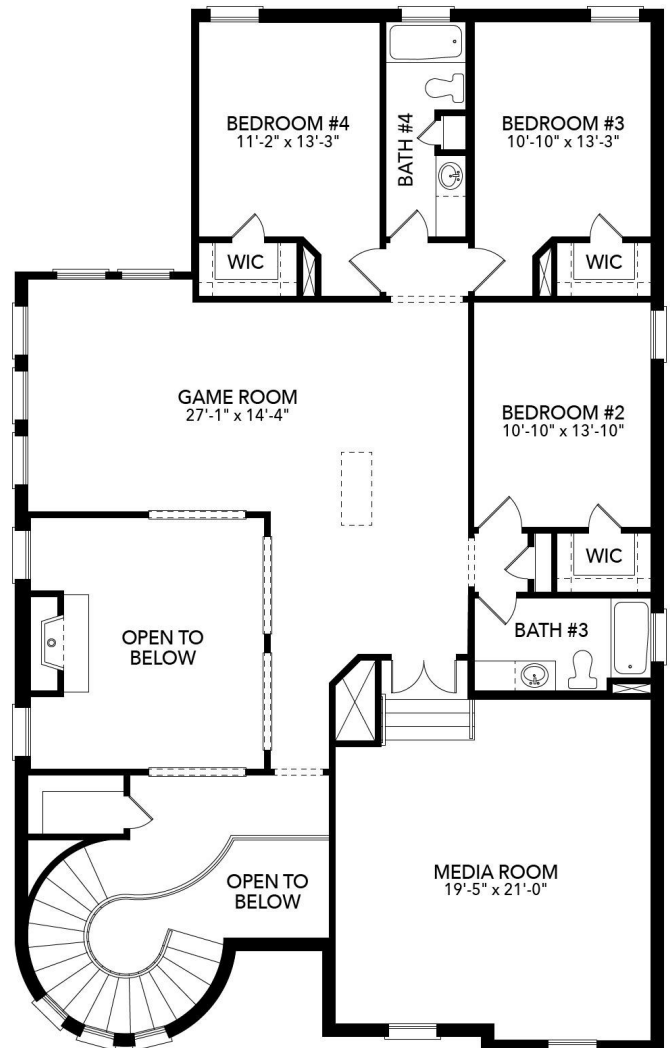


All discounts and/or incentives are subject to credit approval and use of builder's preferred lender and title company. Floorplans and renderings are artist's conceptions. Dimensions are approximate. Floor plans, room sizes, exteriors, and standard features may vary. Sandlin Homes reserves the right to modify the plan and specifications without notice or obligation. Copyright 2017 Sandlin Homes - All Rights Reserved





First Floor



Second Floor