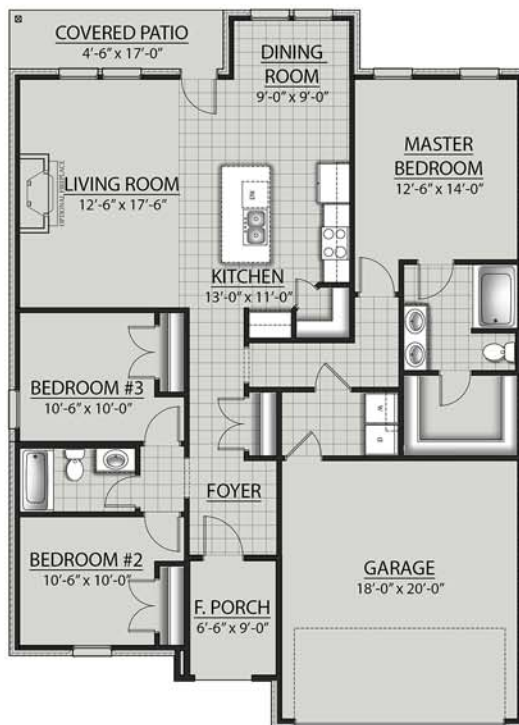


# THE RAYMOND G IV PLAN



## LIVING AREA

1517 Square Feet

## TOTAL AREA

2059 Square Feet

## FEATURES

- Open Floor Plan
- Three Bedrooms, Two Bathrooms
- Brick & Siding Exterior
- Recessed Can Lighting in Kitchen
- Double Master Vanity
- Walk-In Master Closet
- Two Car Garage
- Covered Rear Patio



Floor plans and elevations are subject to change without notice. Elevations and renderings are artistic conceptions and may not accurately depict home styles. Windows, doors and plan configurations are subject to change per elevation. Information contained in this flyer is subject to errors, omissions, changes, withdrawals and prior sales without notice.