

# NOLAN



2,211 sq ft



4 bed



3 bath



study/flex



3-car garage



A | traditional



B | craftsman



E | mountain cottage

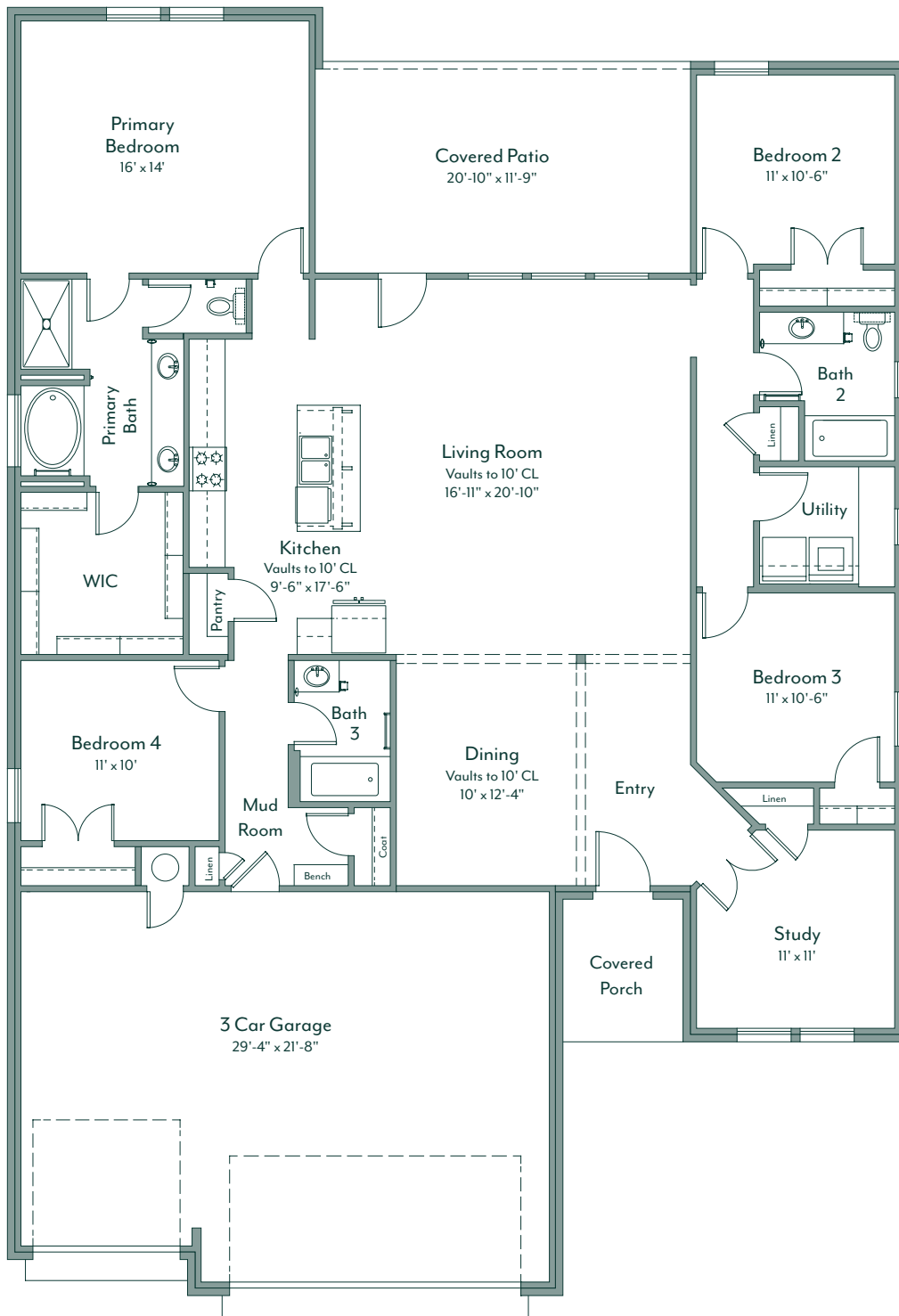
## YOUR IDEAL HOME

Recognized as one of the nation's top-quality home builders, IDEAL has built a 35-year reputation in Oklahoma for energy efficiency, high customer satisfaction, exceptional value for your money, and style that maximizes innovative design. IDEAL is also the **only builder in Oklahoma** to guarantee your heating and cooling costs for three years.\*

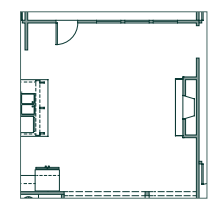
Learn more about the included features for this floor plan.



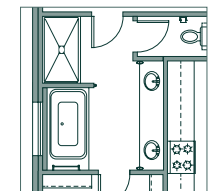
*\*Some community exclusions apply*



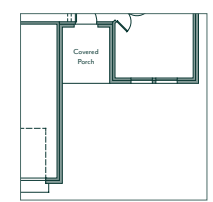
 customize this plan



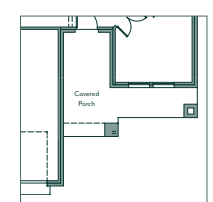
living room:  
fireplace



primary bath:  
freestanding tub



porch b



porch e



Use our **interactive online tool to customize** this floor plan and explore elevation options.