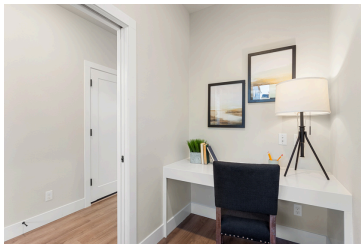


\$35,000  
CLOSING  
COST  
AND/OR  
BUYDOWN  
INCENTIVE



OFFERED AT  
**\$735,000**

**Wilson**  
RX 516 PNWM

**LOCATION**

8477 SE Barlow St  
Hillsboro, OR 97123  
Lot 1433

### Property Features



2,475 Sq. Ft.



4 Bedrooms



2.5 Bathrooms



2 Car Garage

- Loft on upper level
- Spacious living room and kitchen
- Walk-in pantry and lots of cabinet space
- Whirlpool appliances
- Standard driveway

StoneBridgeHomesNW.com

503-221-8444

TeamTravis@stonebridge-realty.com

# Reed's Crossing Wilson - RX 516 PNWM

