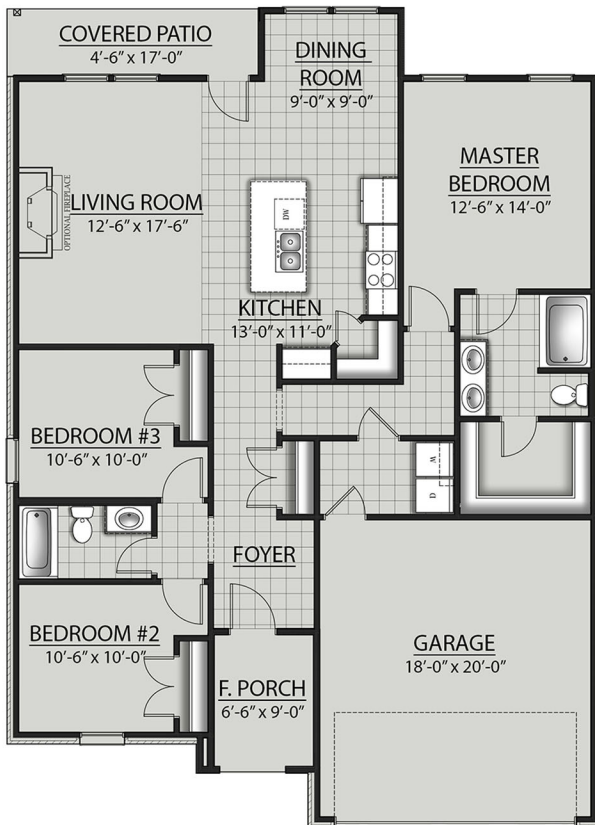


THE RAYLEIGH G IV PLAN



Living Area

1495 Square Feet

Total Area

2039 Square Feet

Features

- Open Floor Plan
- Three Bedrooms, Two Bathrooms
- Brick & Siding Exterior
- Recessed Can Lighting in Kitchen
- Walk-In Pantry
- Double Master Vanity
- Large Master Tub
- Walk-In Master Closet
- Two Car Garage
- Covered Rear Patio



Floor plans and elevations are subject to change without notice. Elevations and renderings are artistic conceptions and may not accurately depict home styles. Characteristics, including but not limited to windows, doors, plan configurations and orientations are subject to change per home site. Information contained in this flyer is subject to errors, omissions, changes, withdrawals and prior sales without notice.