

Traditional  
Elevation



Urban Farmhouse  
Elevation



Craftsman  
Elevation



YORKSHIRE

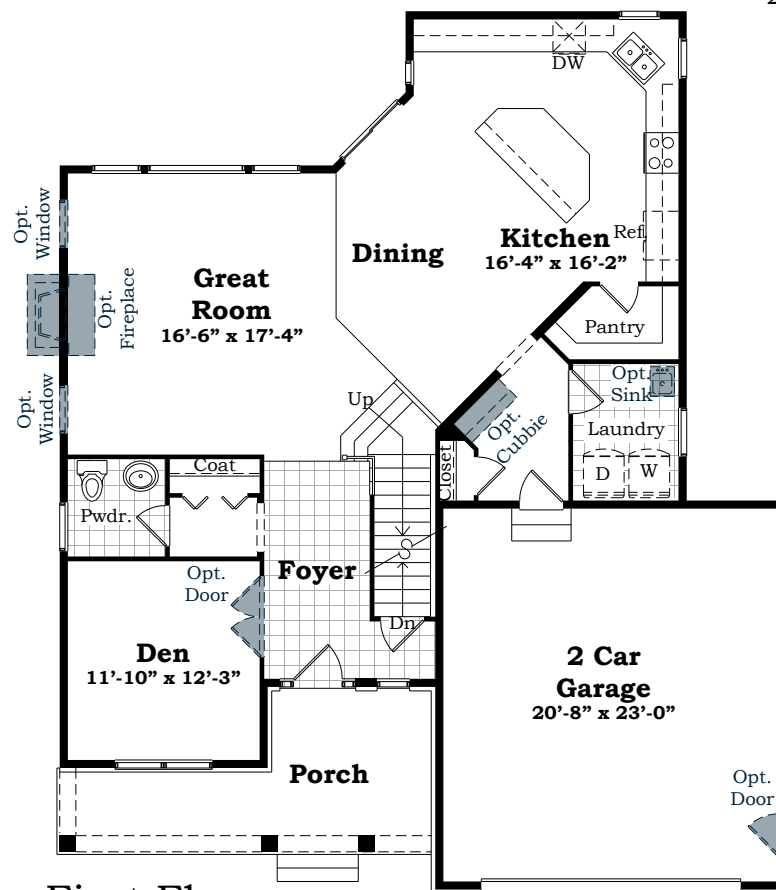


**Norfolk**  
H O M E S

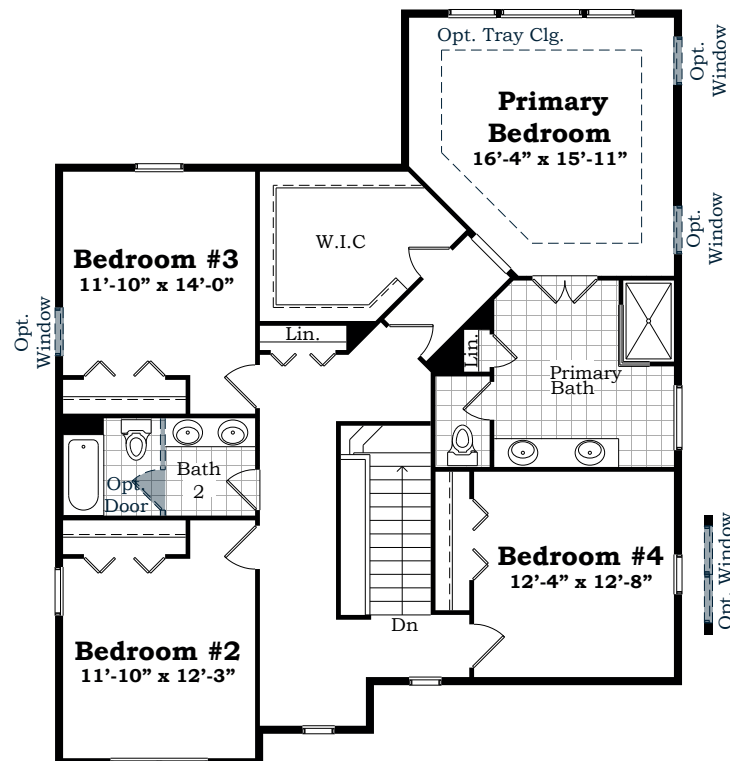
Building Dreams, One Home At A Time  
[www.norfolk-homes.com](http://www.norfolk-homes.com)



Approximate Sq.Ft. 2,736, 4 Bedrooms, 2.5 Baths,  
2 Car Garage



First Floor



Second Floor

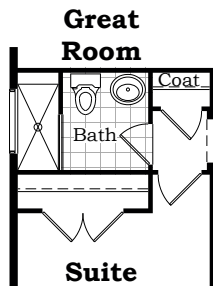


**Norfolk**  
HOMES  
www.norfolk-homes.com

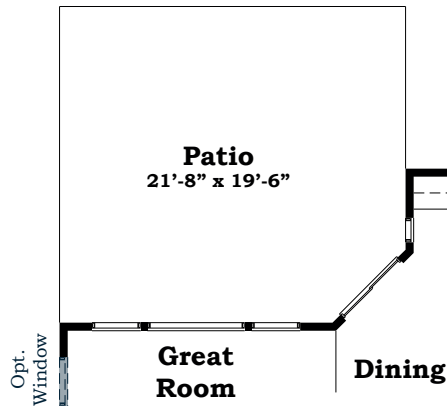
Renderings and floorplans are artist's conception. Room dimensions and square footage are approximate and may vary with construction. Landscaping shown is not included. The right is reserved to make changes without notice or obligation. Windows, doors and ceilings may vary based on options and elevations selected. Not all homes can be built on all homesites. Optional items are available at additional cost. The brochure is for illustrative purposes only and not part of a legal contract. Please see sales consultant for further details. © Norfolk Homes 2018.



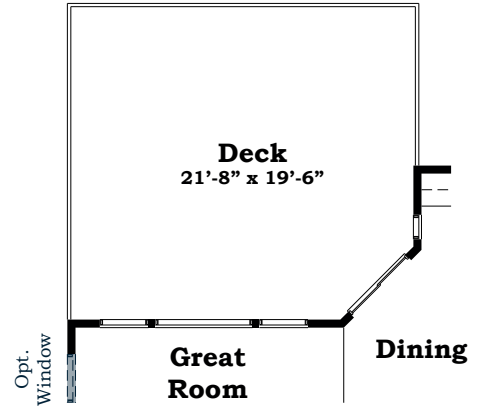
Approximate Sq.Ft. 2,736, 4 Bedrooms, 2.5 Baths,  
2 Car Garage



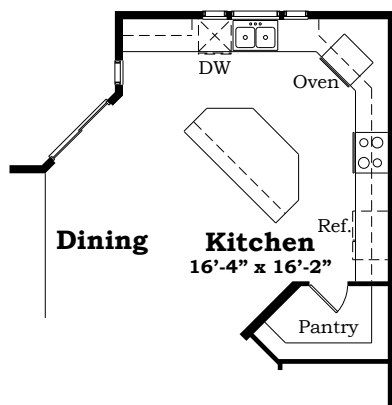
Opt. In-Law Suite  
ILO Den



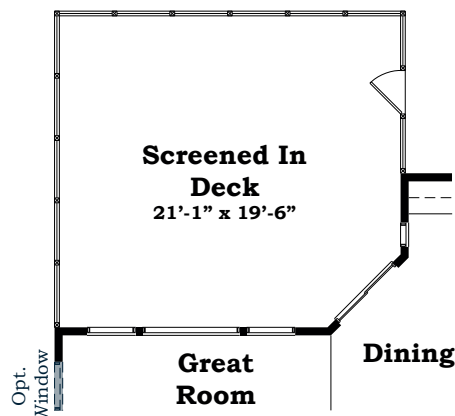
Opt. Concrete Patio



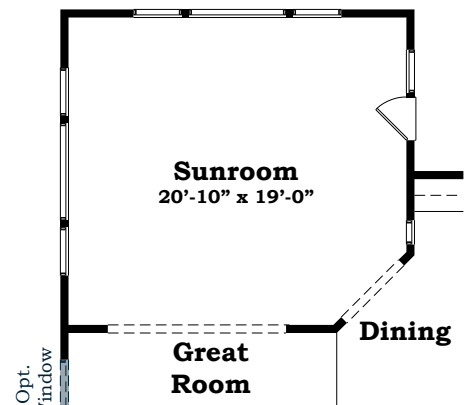
Opt. Deck



Opt. Kitchen Layout

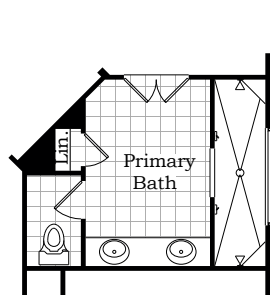


Opt. Screened In Deck

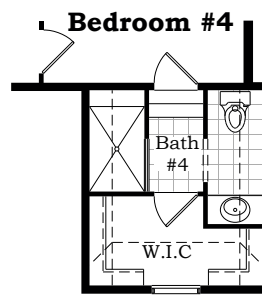


Opt. Sun Room

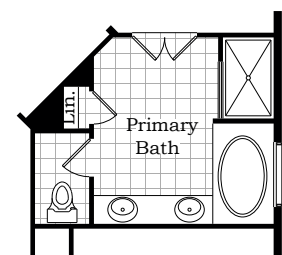
## First Floor Options



Opt. Grand Shower



Opt. Princess Suite



Opt. Master Bath Tub

## Second Floor Options



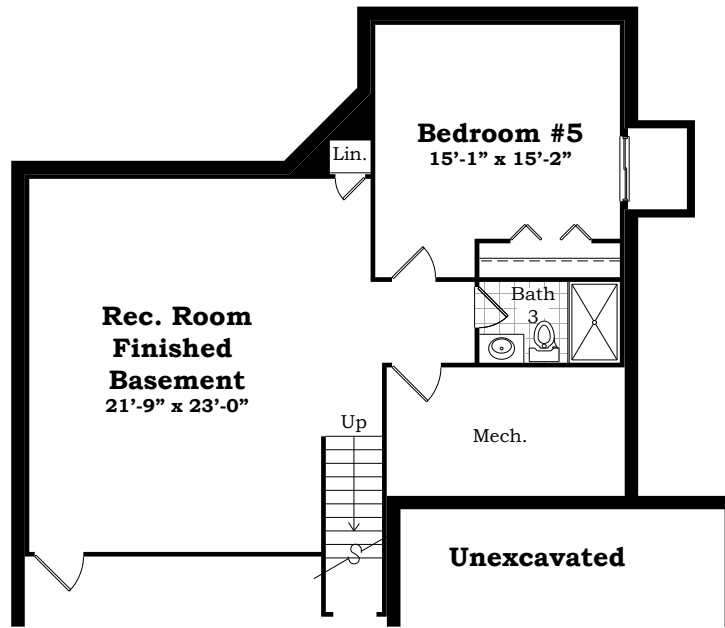
Norfolk  
HOMES  
www.norfolk-homes.com



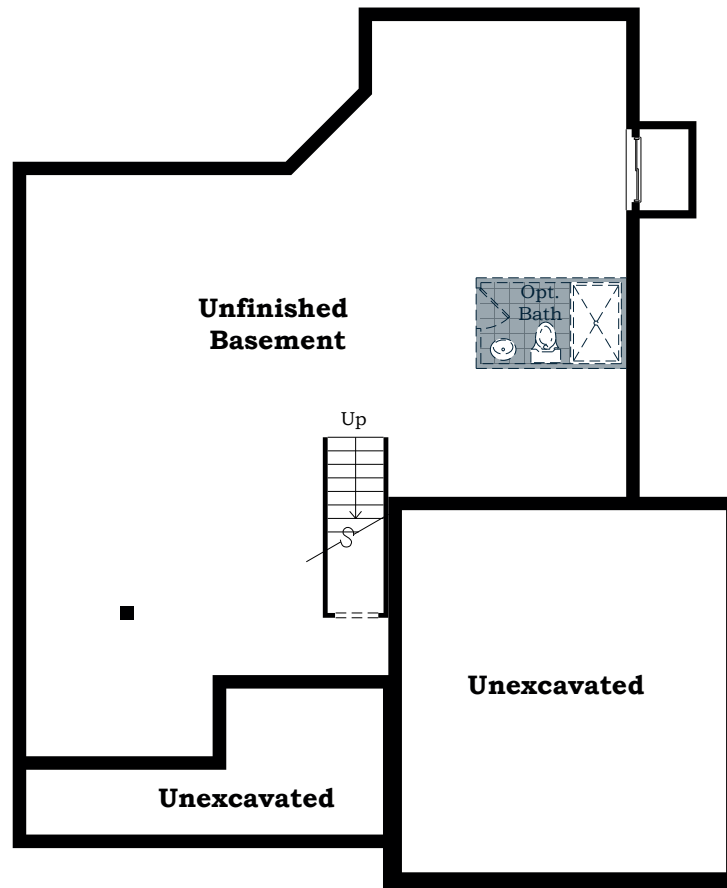
Renderings and floorplans are artist's conception. Room dimensions and square footage are approximate and may vary with construction. Landscaping shown is not included. The right is reserved to make changes without notice or obligation. Windows, doors and ceilings may vary based on options and elevations selected. Not all homes can be built on all homesites. Optional items are available at additional cost. The brochure is for illustrative purposes only and not part of a legal contract. Please see sales consultant for further details. © Norfolk Homes 2018.



Approximate Sq.Ft. 2,736, 4 Bedrooms, 2.5 Baths,  
2 Car Garage



Opt. Bedroom #5 w/ Bath #3



Basement



**Norfolk**  
HOMES  
www.norfolk-homes.com

