

DESIGN

ROUNDROCK - 6236



A



B



C



D



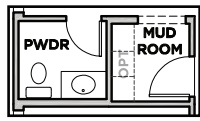
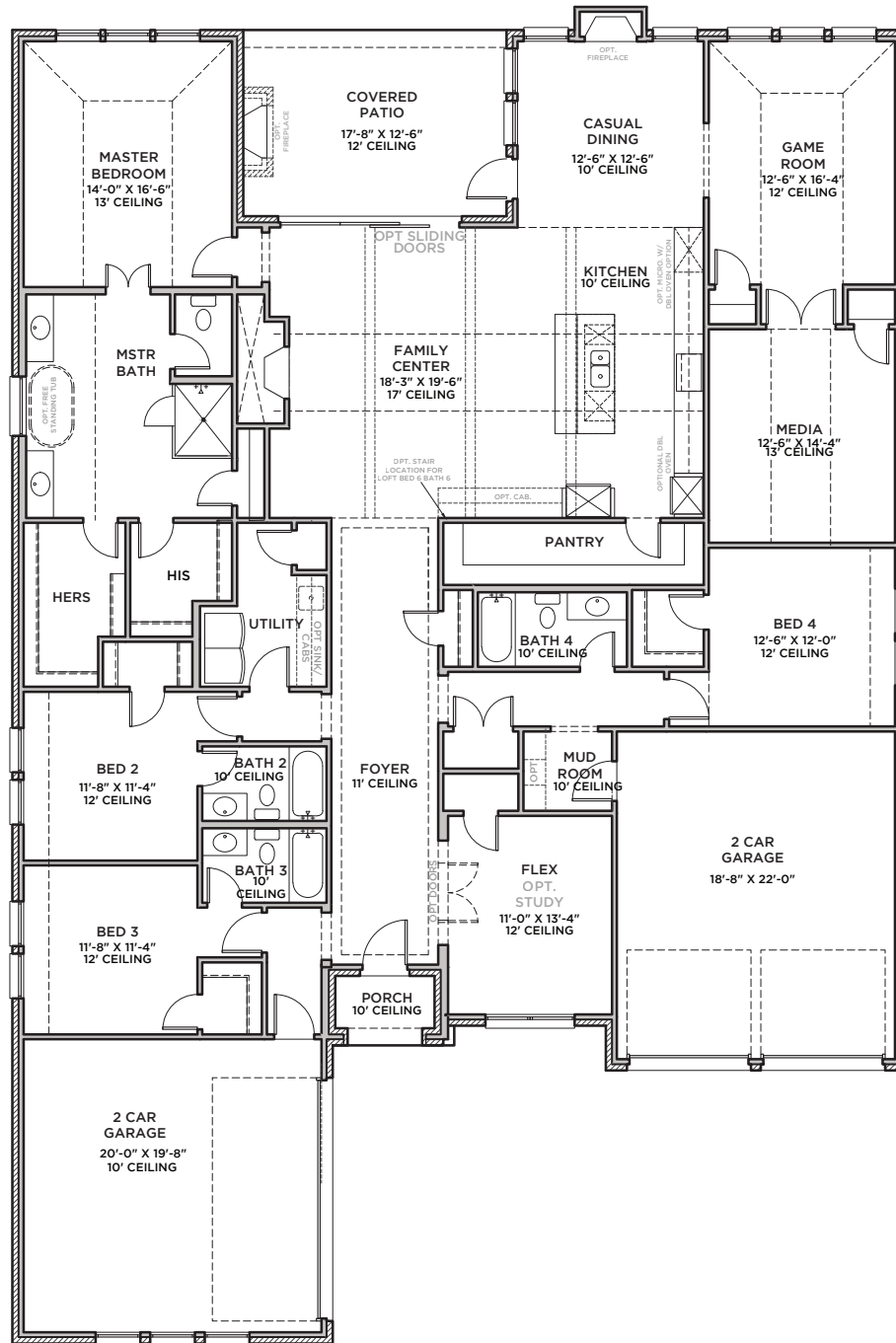
E



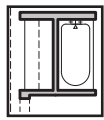
F



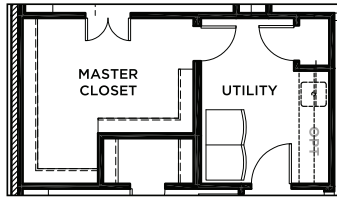
All Product including Architectural Designs, ©2000-2026, Shaddock Homes, LTD., All rights reserved. There may be existing or future design changes made in the floorplans, building products, methods, square footage, or designs used in our homes that are not reflected in our information, sales center or in our models. The materials, designs, square footages, features, and amenities shown are based upon current development plans, which are subject to change without notice. No guarantee is made that the designs, square footages, materials, features, and amenities depicted by artist's renderings or otherwise described will be built, or if built, will be of the same type, size or nature as depicted or described. All stone elevations, metal roofs, cast stone door and window headers and solid sawn cedar posts are optional, but available via change order. Front doors will match the specification sheet or chosen door upgrade. Prices and terms subject to change without notice. [REVISION DATE:1.24.24](#)



OPT PDR ILO CLOSET
(NOT AVAILABLE W/ STUDY 2)



OPT BUTLER'S PANTRY ILO CLO

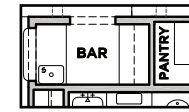


OPT LARGER MASTER CLOSET

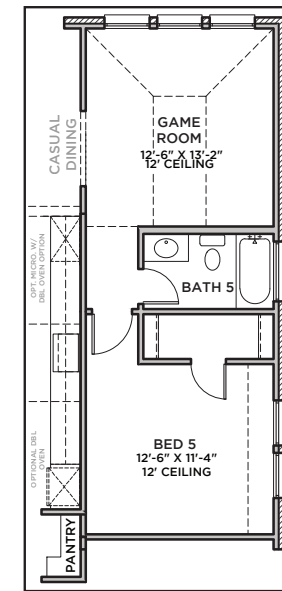
ROUND ROCK 6236 (1.24.24)

	S.FT
First Floor	3402
Total Living Area	3402
4 Car Garages	921
Covered Patio	220
Covered Porch	34
Total Area	4577
OPT	
Ext. Covered Patio	80
Bed 5/Bath 5	253
Stairs, Bed 6/Bath 6	557

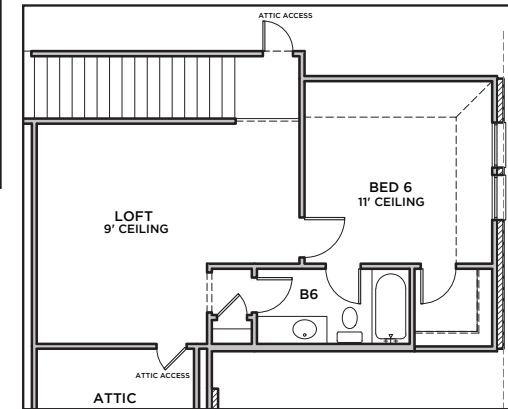
SHADDOCK HOMES



OPT BAR @ FAMILY CENTER
(NOT AVAIL W/ LOFT BED 6/NO OPTS)



OPT BED 5 & BATH 5 ILO MEDIA



ELEV "A" OPT. LOFT W/ BED 6 & BATH 6 SECOND FLOOR PLAN