

THE CORNERSTONE DIFFERENCE.

Discover Chickahominy Falls' most perfectly proportioned floorplans from an award-winning team exclusively focused on 55+ homeowners.



cornerstone
HOMES

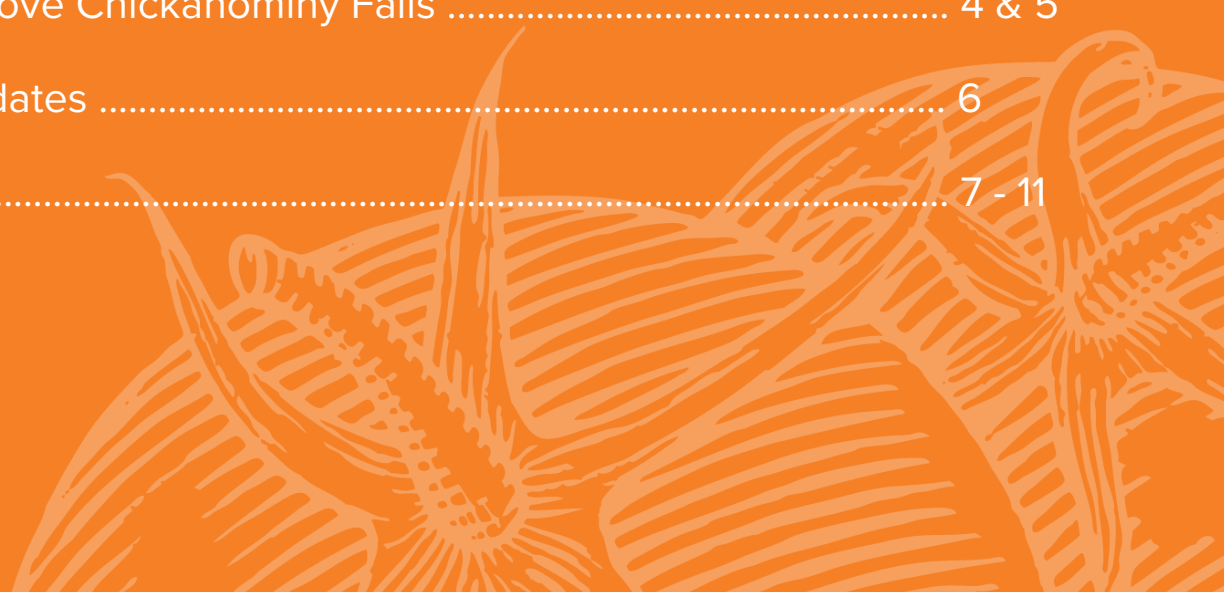
- CHICKAHOMINY FALLS -
westwood gardens
EST. 2018

C'MON IN.

Thank you for choosing Cornerstone Homes at Chickahominy Falls. No other builder in Greater Richmond spends more time, energy and resources envisioning new ways to help 55+ homeowners live better, healthier, and more engaged lives. For over 20 years we have focused exclusively on Active Adults. We look forward to creating an exceptional home and experience for you at Chickahominy Falls.

TABLE OF CONTENTS

Meet our President, Frank Lackman	2
Community Plan - Westwood Gardens	3
Reasons to Love Chickahominy Falls	4 & 5
Events & Updates	6
Floor Plans	7 - 11



BECAUSE YOU WANT SO MUCH MORE THAN A HOUSE.

Since our founding in 2001, Cornerstone Homes has been solely focused on building homes and communities dedicated to the wellness, connection, and lifestyle of people 55+.

As specialists with deep local roots, we have a unique understanding of what truly matters to active adults. Simply put, you want so much more than a house. You want a home that simplifies everyday living, accommodates life changes, and frees you to spend more time doing what you love.

No one is more qualified or dedicated to providing this experience than Cornerstone Homes.

Here at Chickahominy Falls, it starts with a homesite that fits seamlessly within the larger community, so you feel more connected to your beautiful surroundings. You'll enjoy a personalized construction process that allows us to tailor our homes specifically for you. With quality finishes and thoughtful design features that encourage interaction with friends and family, as well as quieter spaces to relax and unwind. All just steps to one-of-a-kind amenities, including a working farm that produces fresh foods to support your health goals.

You deserve a home that embraces your lifestyle and keeps you engaged, connected, and inspired. We can't wait to build it for you at Chickahominy Falls.



“

OUR HOMEBUYERS GET MORE THAN JUST A HOUSE. THEY GET A SENSE OF COMMUNITY AND A LIFESTYLE TAILORED TO THEIR UNIQUE NEEDS, PASSIONS AND INTERESTS.

Frank Lackman

PRESIDENT, CORNERSTONE HOMES

WESTWOOD GARDENS

SITEPLAN



Inspired by the charm and easy living of our original Westwoods neighborhood, Westwood Gardens is everything you loved and then some. Here, detached cottage homes offer up to 1,800 square feet of perfectly proportioned living, crafted for comfort and connection at every turn.

From welcoming front porches made for neighborly chats to private back patios ideal for sunset toasts, every inch of Westwood Gardens is designed for life that feels simpler, richer, and more intentional. Inside, the floorplans are thoughtful and flexible, with just the right amount of space and none of the extra upkeep.

Because at this point in life, freedom should be a lifestyle. And this is the place that brings it all home.



SEVEN REASONS TO LOVE CHICKAHOMINY FALLS.

Healthy Living Comes Naturally.



Chickahominy Falls is literally rooted in better health and wellness thanks to Woodside Farms. This modern, professionally managed, four-season farm produces a curated mix of fruits, vegetables, herbs, and flowers selected for their health and dietary benefits for active adults. This 10-acre farm is the heart & soul of Chickahominy Falls.

The Farmhouse Campus.



Designed to be both down-to-earth, yet upscale, The Farmhouse Campus is one more space where neighbors can seize the day, every day. Lingering longer is the expected pace around here. Where ladies will lunch, neighbors will belly up to the Silo Bar with a homemade cocktail in hand and folks can join a friendly billiards competition.

Friendly Faces at Woodside Farms.



Our professional Farm Managers at Woodside Farms, are responsible for planting, growing and harvesting all vegetables and fruits, providing locally sourced foods & products for The Woodside Market and landscaping services throughout the community.

The Barn at Woodside Farms.



The Barn is the heart of Woodside Farms and center for wellness. Featuring a chef's kitchen designed for 5-star demonstrations and community events with plenty of space to gather inside and out, The Red Barn hosts it all!

Experts in 55+ Living.

5



Cornerstone Homes specializes in 55+ communities, so you can rest assured our homes at Chickahominy Falls bring high-style to low-maintenance living. Open floorplans. Designer kitchens. Indoor/outdoor living. Flex rooms. Attached and detached designs, and so much more!

Near And Dear To Ashland & Richmond.

6



In addition to having everyday conveniences just minutes from Chickahominy Falls, you'll enjoy the small town feel of Ashland just 8 minutes away, and the big city amenities of Richmond just 20 minutes away. It's a quick drive to the best of both worlds—quirky shops and restaurants plus world class museums, travel and nightlife.

With Us, It's Personal.

7



As a local, exclusive 55+ builder, we have a passion for creating lasting communities. You will feel just as special the day you first visit as the day we hand you the keys to your new home. We'll be with you through the entire process, from initial contract through selections and final closing.



**FOLLOW
CHICKAHOMINY FALLS
ON SOCIAL FOR THE
VERY LATEST.**

Be sure to follow along for the latest community updates and images from VIP events.



INSTAGRAM



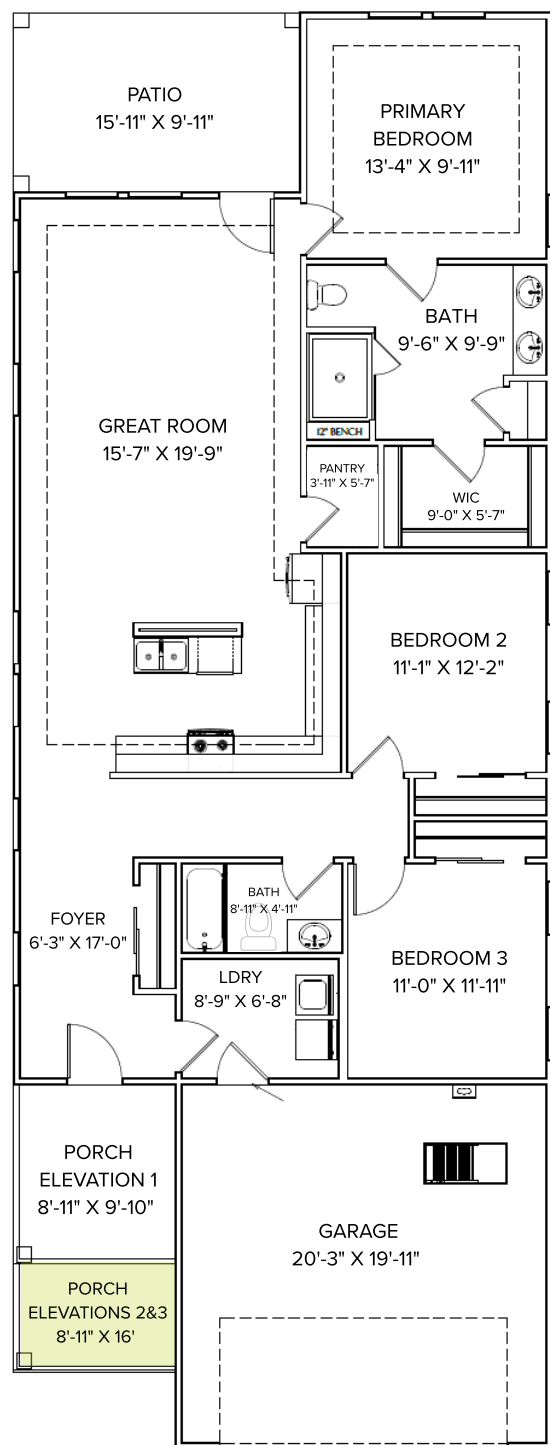
FACEBOOK



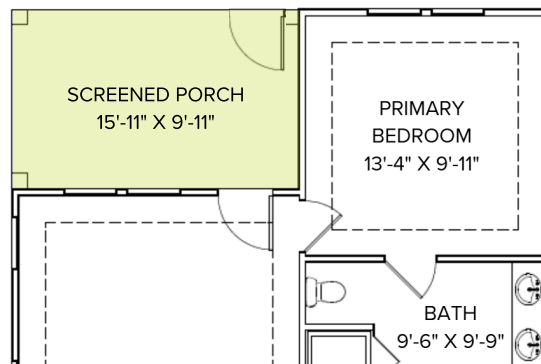
THE FLOYD COTTAGE HOME // 1,630 SF

3 BEDROOMS, 2 BATHS, 2-CAR GARAGE

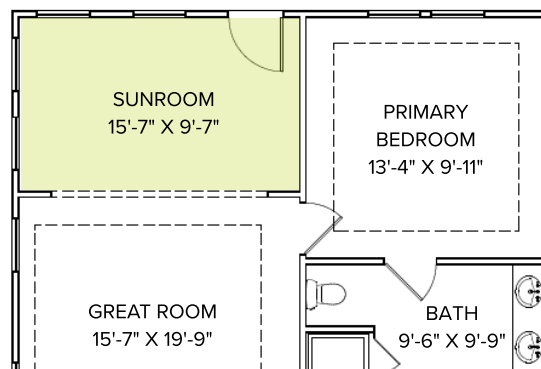
MAIN FLOOR:



OPT. SCREENED PORCH:



OPT. SUNROOM: 168 SF



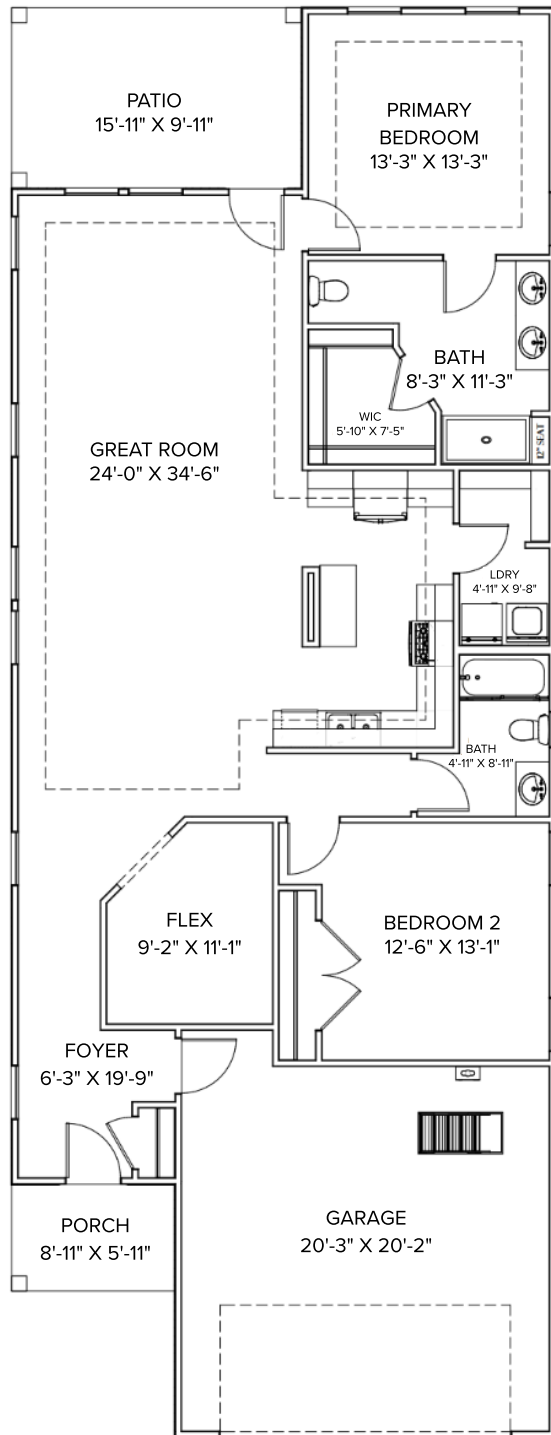
FEATURES:

- FLEXIBLE FLOORPLAN
- SPACIOUS KITCHEN AND PANTRY
- 2 EXTRA BEDROOMS FOR FRIENDS, FAMILY, OFFICE, OR FLEX SPACE
- LARGE LAUNDRY ROOM/OWNER'S ENTRY
- WELL-APPOINTED OWNER'S SUITE
- COVERED FRONT PORCH, EXTENDED IN ELEVATIONS 2&3
- COVERED BACK PATIO OR OPTIONAL SCREENED PORCH OR SUNROOM
- SPACIOUS 2-CAR GARAGE
- TIMELY & LASTING FEATURES

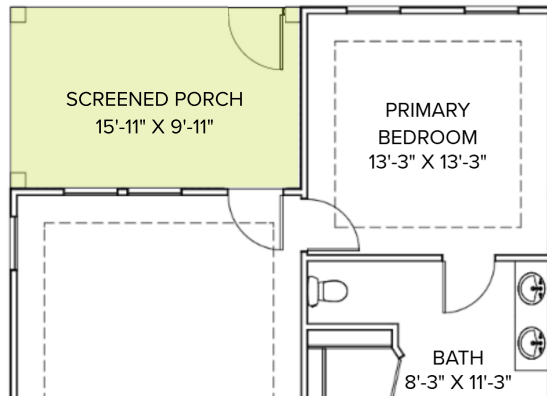
THE GILES COTTAGE HOME // 1,642 SF

2 BEDROOMS, 2 BATHS, OFFICE/FLEX SPACE, 2-CAR GARAGE

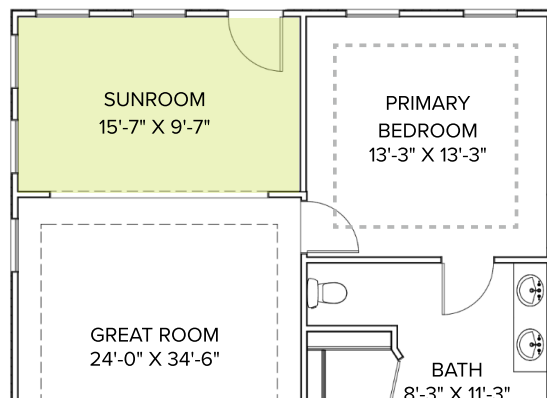
MAIN FLOOR:



OPT. SCREENED PORCH:



OPT. SUNROOM: 160 SF



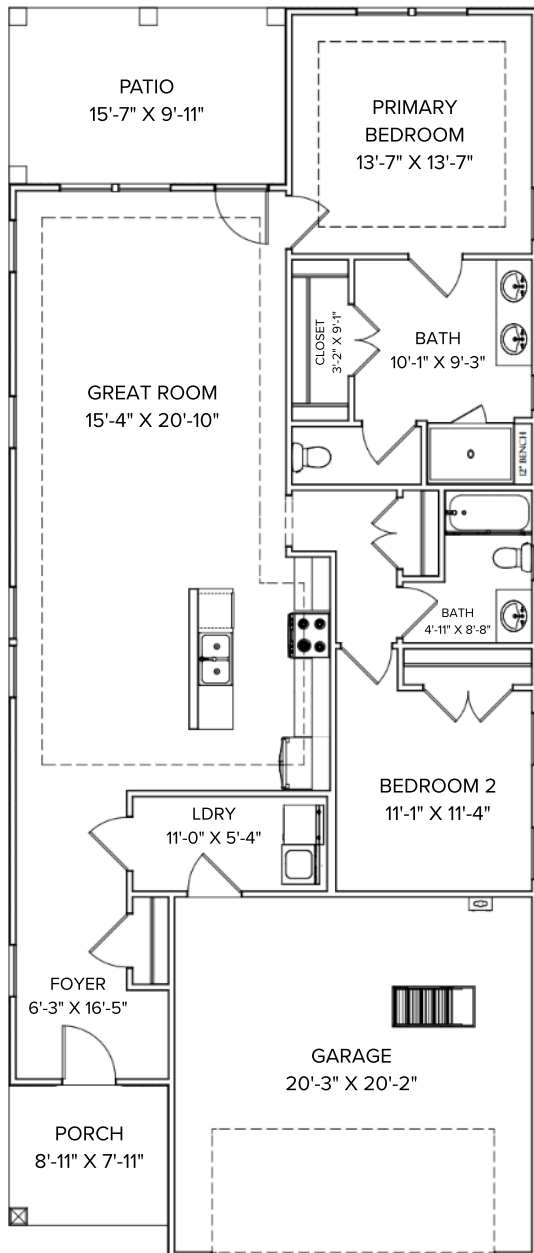
FEATURES:

- OPEN, AIRY FLOORPLAN
- EXTRA LARGE GREAT ROOM WITH ENTERTAINING DINING AND KITCHEN AREAS
- OFFICE/FLEX SPACE
- WELL-APPOINTED OWNER'S SUITE
- COVERED FRONT PORCH
- COVERED BACK PATIO OR OPTIONAL SCREENED PORCH OR SUNROOM
- SPACIOUS 2-CAR GARAGE
- TIMELY & LASTING FEATURES

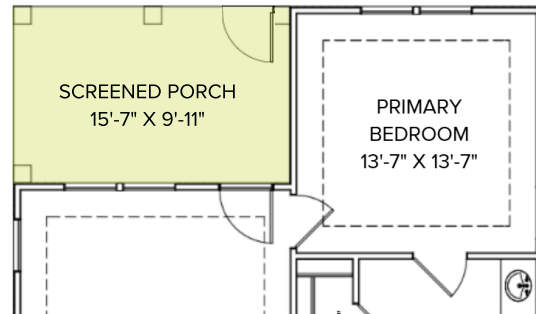
THE KENT COTTAGE HOME // 1,457 SF

2 BEDROOMS, 2 BATHS, 2-CAR GARAGE, OPTIONAL LOFT LEVEL

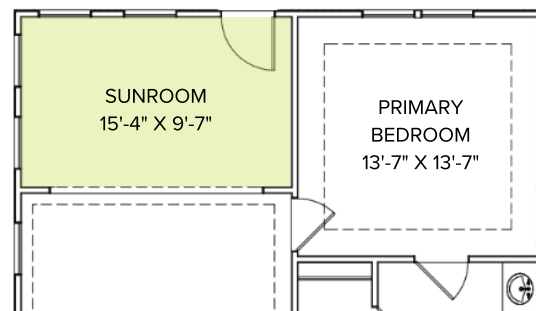
MAIN FLOOR:



OPT. SCREENED PORCH:



OPT. SUNROOM: 168 SF



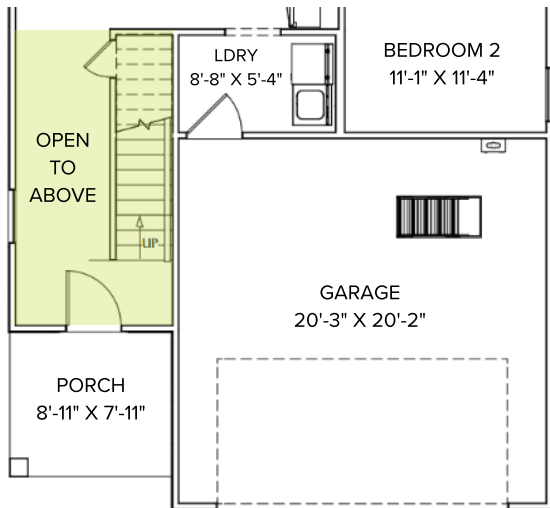
FEATURES:

- FLEXIBLE, OPEN FLOORPLAN
- LARGE GREAT ROOM
- WELL-APPOINTED OWNER'S SUITE
- LARGE LAUNDRY ROOM/OWNER'S ENTRY
- COVERED FRONT PORCH
- COVERED BACK PATIO OR OPTIONAL SCREENED PORCH OR SUNROOM
- OPTIONAL LOFT LEVEL WITH ADDITIONAL BED & BATH
- SPACIOUS 2-CAR GARAGE
- TIMELY & LASTING FEATURES

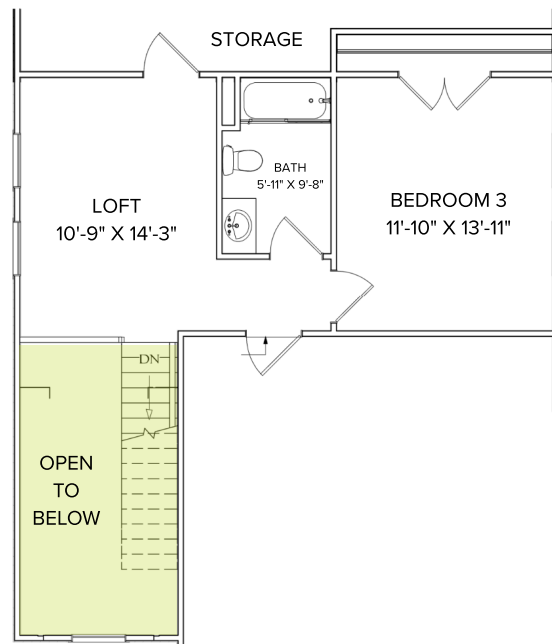
THE KENT COTTAGE HOME // 1,924 SF

OPTIONAL LOFT LEVEL: ADDS 1 BEDROOM, 1 BATH

MAIN FLOOR w/ STAIRS:



LOFT LEVEL: 467 SF



Tammy DeFazio
(804) 500-5482 • CFSales@CornerstoneHomes.net

Sales Center
10477 Woodside Farms Drive • Glen Allen, VA 23059

CornerstoneHomes.net

