

# THE CORNERSTONE DIFFERENCE

Discover Villas at White's Mill, a community of low-maintenance townhomes designed exclusively for active adults aged 55 and better.



*Villas at*  
**WHITE'S MILL**

# C'MON IN.

Thank you for choosing Cornerstone Homes at Villas at White's Mill. No other builder in the Blue Ridge Highlands region spends more time, energy, and resources envisioning new ways to help 55+ homeowners live better, healthier, and more engaged lives. For over 25 years, we have focused exclusively on Active Adults. We look forward to creating an exceptional home and experience for you at Villas at White's Mill.

## TABLE OF CONTENTS

Meet our President, Frank Lackman	3
Community Plan	4
Reasons To Love Villas at White's Mill	5&6
Live Local With Cornerstone Homes	7
Floor Plans	8-12

# BECAUSE YOU WANT SO MUCH MORE THAN A HOUSE.

Since our founding in 2001, Cornerstone Homes has been solely focused on building homes and communities dedicated to the wellness, connection, and lifestyle of people 55+.

As specialists with deep local roots, we have a unique understanding of what truly matters to active adults. Simply put, you want so much more than a house. You want a home that simplifies everyday living, accommodates life changes, and frees you to spend more time doing what you love.

No one is more qualified or dedicated to providing this experience than Cornerstone Homes.

Here at Villas at White's Mill, it starts with a prime location surrounded by historic charm and modern conveniences. You'll enjoy a personalized construction process that allows us to tailor our homes specifically for you. With quality finishes and thoughtful design features that encourage interaction with friends and family, as well as quieter spaces to relax and unwind. All just steps to one-of-a-kind amenities, including award-winning dining, farmers markets, and more.

You deserve a home that embraces your lifestyle and keeps you engaged, connected, and inspired. We can't wait to build it for you at Villas at White's Mill.



OUR HOMEBUYERS GET MORE THAN JUST A HOUSE. THEY GET A SENSE OF COMMUNITY AND A LIFESTYLE TAILORED TO THEIR UNIQUE NEEDS, PASSIONS AND INTERESTS.

**FRANK LACKMAN**

President, Cornerstone Homes

# VILLAS AT WHITE'S MILL

## SITEPLAN

Luxury. Warmth. Freedom. They're not as hard to find as you might think...especially when you discover Villas at White's Mill in Abingdon, Virginia. This exclusive enclave of 16 townhomes and 3 other unique single-level homes is designed for active adults aged 55 and better, offering the perfect balance of historic charm and modern convenience. Villas at White's Mill puts you within walking distance of downtown Abingdon and is near the White's Mill historic site, giving plenty of ways to fill your calendar. Each home is meticulously crafted for single-level living, with spacious open-concept layouts, energy-efficient features, and all the modern amenities today's active adults desire.

Whether you're exploring the cultural offerings of Abingdon or savoring the tranquility of your new home, the Villas at White's Mill is where your best chapter begins.



# SEVEN REASONS TO LOVE VILLAS AT WHITE'S MILL

## Lock It and Leave It.



Enjoy the freedom of a low-maintenance, lock-and-leave lifestyle. Whether this is your primary residence or a second home, you can travel with confidence knowing that everything is taken care of while you're away.

## Stroll to Something New.



Downtown Abingdon is just a short walk away! Explore charming restaurants, enjoy a show at the Barter Theatre, browse the local farmers market, so much more. Living here means every day can be an adventure.

## All on One Level.



Say goodbye to stairs and hello to easy living. Our single-level townhomes are perfect for those looking to downsize without sacrificing comfort or style.

## Adventure in Your Backyard.



Outdoor enthusiasts will love being so close to the Virginia Creeper Trail and Mount Rogers National Recreation Area. Whether it's hiking, biking, or simply soaking in nature, adventure is always within reach.

## Experts in 55+ Living.

5



Cornerstone Homes specializes in 55+ communities, so you can rest assured our homes at Villas at White's Mill bring high-style to low-maintenance living. Open floorplans. Designer kitchens. Indoor/outdoor living. Flex rooms. Attached and detached designs, and so much more!

## A Foodie's Paradise.

6



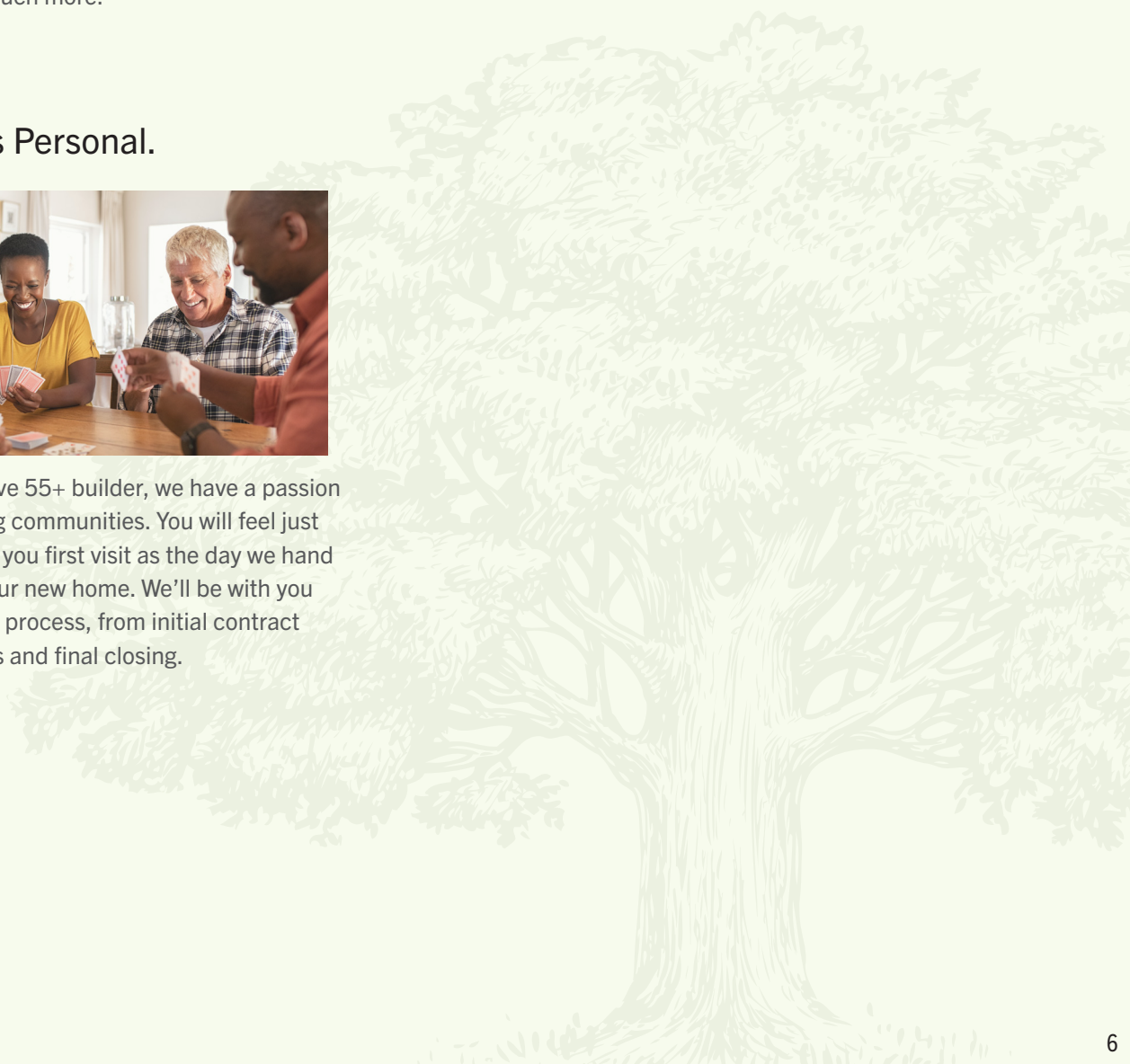
Abingdon's award-winning restaurant scene is ready to tempt your tastebuds. From farm-to-table delights to local favorites, you'll find plenty of flavors to savor just around the corner.

## With Us, It's Personal.

7



As a local, exclusive 55+ builder, we have a passion for creating lasting communities. You will feel just as special the day you first visit as the day we hand you the keys to your new home. We'll be with you through the entire process, from initial contract through selections and final closing.



# LIVE LOCAL, *thrive together*



When you choose one of our communities, you're choosing a lifestyle where connection, culture, and comfort come together. Villas at White's Mill is driven by local community and proximity to the Abingdon area, where charming shops, award-winning restaurants, theater, and farmers markets are just a stroll away.

Our thoughtfully designed homes fit seamlessly into the fabric of this vibrant town, providing low-maintenance, single-level living that gives you more time to enjoy everything around you.

## LIVE LOCAL WITH CORNERSTONE HOMES *in our new community*

Follow Us on Social!



FACEBOOK



INSTAGRAM

# THE CAROLINE TOWNHOME // 1,745 SF

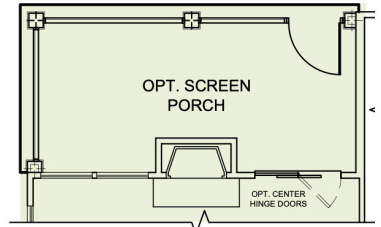
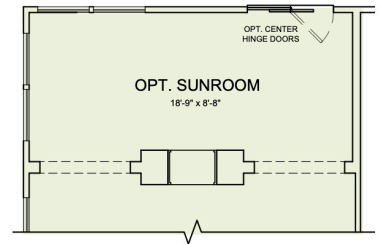
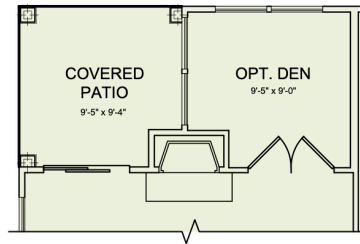
2 BEDROOMS, 2 BATHS, COURTYARD, COVERED PATIO

## MAIN LEVEL

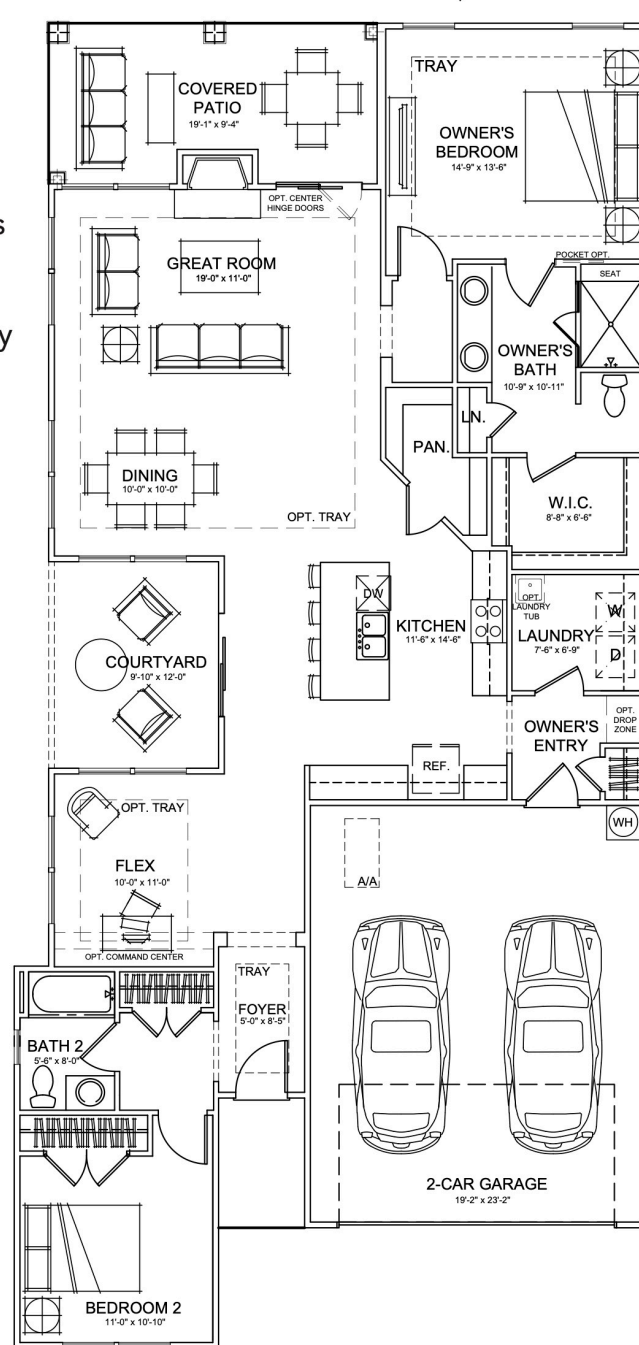
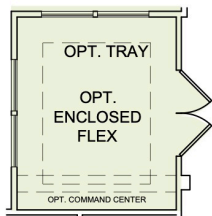
## AND OPTIONS

Think Italian villa with your living space surrounding a beautiful outdoor courtyard, as well as a covered back patio or sunroom. A spacious great room with fireplace, dining area, and kitchen are perfect for everyday living and there's plenty of room for a crowd! The large entertaining island overlooking the courtyard keeps you connected with the outdoors. The Owner's Suite is complete with double vanity, oversized shower and large walk-in closet. There are plenty of flex options to fit your lifestyle! This home has it all.

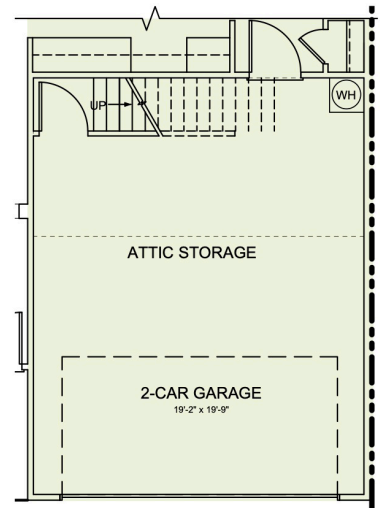
### FLEX OPTIONS



### FLEX OPTION



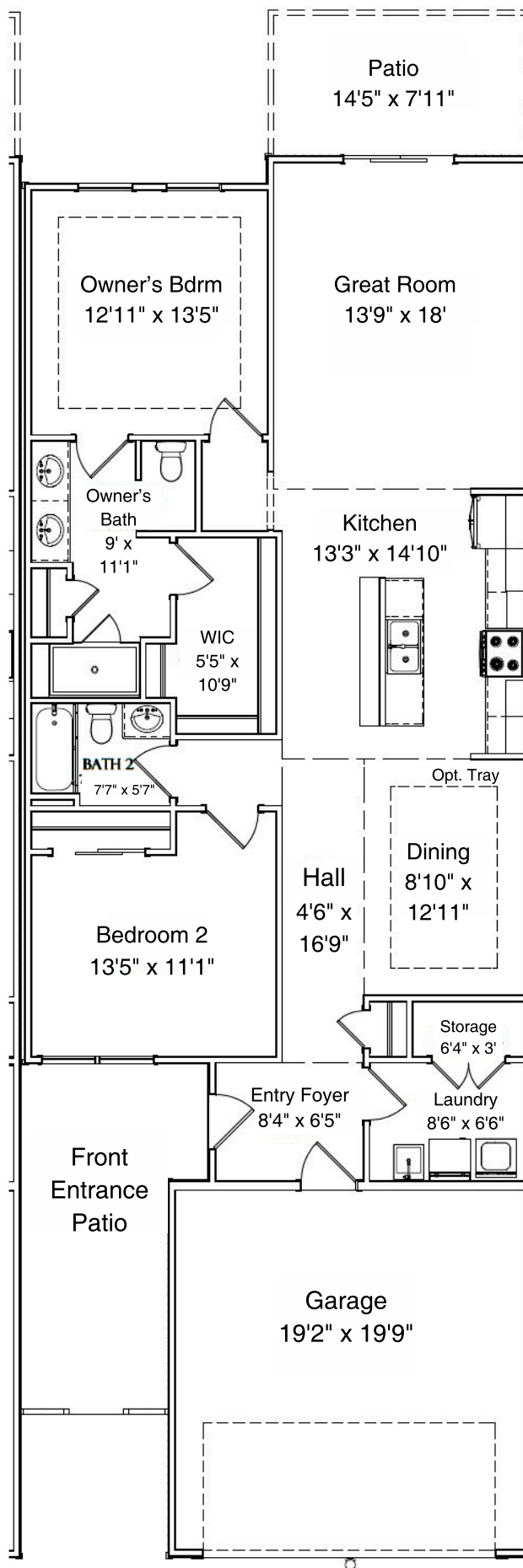
### GARAGE OPTION



## MAIN LEVEL

# The Maymont

1,509 SF



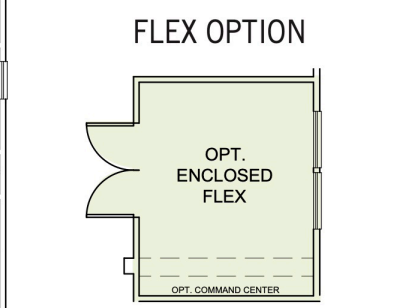
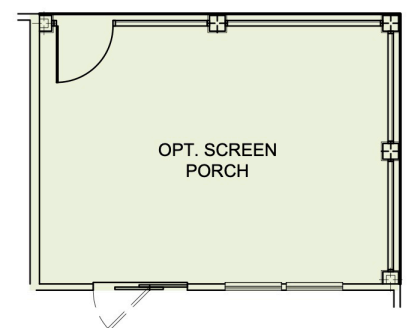
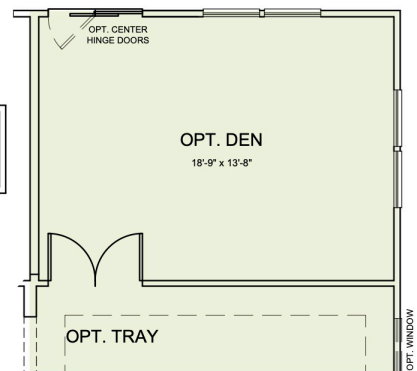
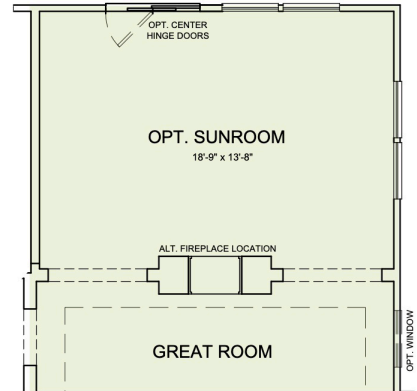
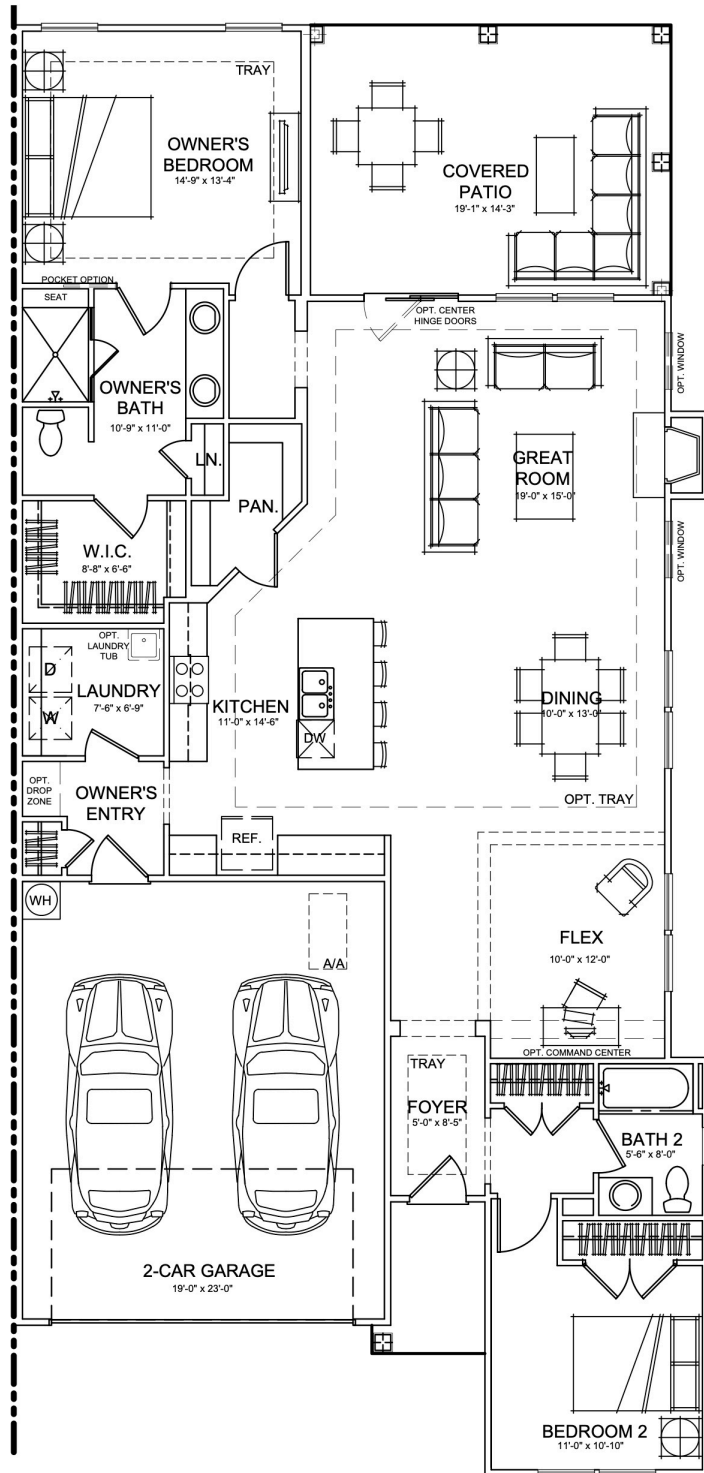
# THE CHARLOTTE TOWNHOME // 1,767 SF

2 BEDROOMS, 2 BATHS, FLEX ROOM, LARGE COVERED PATIO

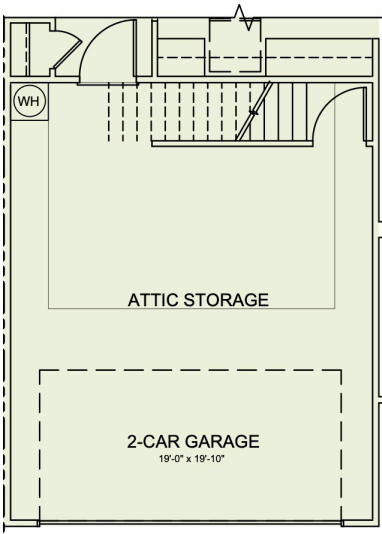
## MAIN LEVEL AND OPTIONS

This distinctive single level townhome features a spacious great room with included gas fireplace and dining area. A huge covered patio that can also be screened or an optional four season sunroom, provides lots of light and outdoor living area for relaxing or entertaining. A 'flex' area for you to design to fit your personal needs and lots of storage.

### FLEX OPTIONS



### GARAGE OPTION



## MAIN LEVEL

## CONTACT US

276-531-3151 • [abingdon@cornerstonehomes.net](mailto:abingdon@cornerstonehomes.net)

## COMMUNITY ADDRESS

336 White's Mill • Abingdon, VA 24210

**[55LivingWhitesMill.com](http://55LivingWhitesMill.com)**



*Villas at*  
**WHITE'S MILL**

All renderings and site plans are for illustrative purposes only and are subject to change without notice.

