

# The Summerhill Craftsman



**\$929,900\***

**March Occupancy**

Cedar Ridge (Lot 28)  
11227 Cedar Ridge Court  
Pleasant Prairie, WI 53158

- 3 Bedrooms
- 2.5 Bathrooms
- 2,602 SF
- 3 Car Garage

#### Directions:

I-94 to 104th Street/Hwy 165. East on 104th Street/Hwy 165. At the Roundabout, take the 1st exit onto Springbrook Rd. Turn left onto 47th Ave. Right onto 113th Street into the neighborhood.

\*Price subject to change without notice.



## KITCHEN FEATURES

Designer kitchen with 42" cabinets with crown molding, soft close doors/drawers & built-in look refrigerator  
Island w/ quartz countertop & tile backsplash  
Large corner pantry  
GE® Cafe kitchen appliance package w/ built-in microwave, dishwasher, slide-in gas range, chimney hood & French door refrigerator in stainless steel finish

## MAIN LEVEL FEATURES

Evoke® luxury vinyl plank flooring throughout main level  
Sunroom off nook  
Two story great room  
Tile gas fireplace w/ boxed mantel & returns  
Office w/ glass double doors  
Separate laundry & mudroom  
Built-in lockers in mudroom  
Pocket door, countertop/folding table & drop-in sink w/ cabinet in laundry room  
Powder bath w/ quartz topped vanity  
4 1/4" base & 3 1/2" casing & solid core swing doors  
Jamb & cased windows in select areas  
Smooth drywall finish

## MASTER SUITE FEATURES

Double bowl vanity w/ quartz countertop & added drawer storage in between  
5'x4' walk-in tiled shower w/glass door, wall-to-wall tile shelf & tiled bench  
Separate commode room  
Large walk-in closet  
Box-up ceiling w/ accent wood beams

## SECOND FLOOR FEATURES

Homework loft  
5' tub/shower w/ tile surround, double bowl vanity, separate commode room & linen closet in bath 2

## ADDITIONAL FEATURES

Azek deck®  
Finished basement staircase w/ railing & balusters  
Insulated & drywalled garage w/ ultra quiet opener & insulated overhead doors  
Basement bathroom plumbing rough in  
Walkout basement w/ patio door & full-sized windows  
Pella® windows in Fossil finish  
Fibercement siding, trim, & corner boards  
Moen® Faucets & Kohler® Toilets  
Dura Supreme® Cabinets  
Maxim® Light Fixtures  
Builder Warranty Included  
Focus on Energy Certified



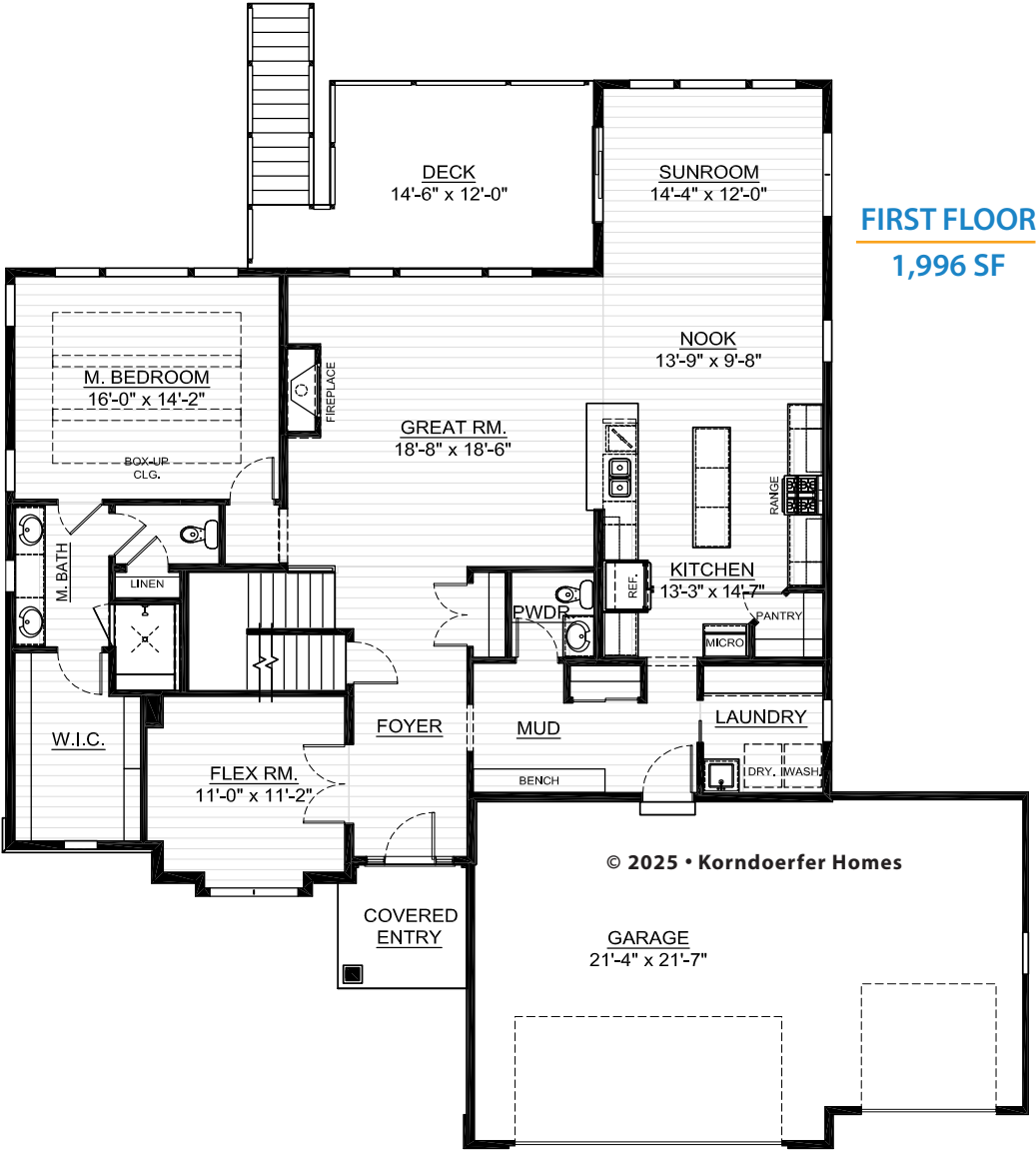
### ASK RYAN!

Online Sales Consultant  
262-884-9551  
sales@korndoerferhomes.com

**KORNDORFER**  
HOMES  
KORNDORFERHOMES.COM



# The Summerhill Craftsman Floor Plan



## SECOND FLOOR

606 SF



**ASK RYAN!**

Online Sales Consultant  
262-884-9551  
sales@korndorferhomes.com

KORNDORFER  
HOMES  
KORNDORFERHOMES.COM

