

# REECE HOMES

7004 SKIPPING ROCK PATH



STELLA RANCH NEIGHBORHOOD

4 BDRM | 4.5 BATH | 3505 SF

Introducing The “Stella” as Reece Homes’ newest masterpiece! This exceptional home boasts 4 bedrooms, 4.5 bathrooms, an upstairs game room and an outdoor kitchen that gives you everything you need for living and entertaining in style! A classic foyer will welcome you with sophistication and warmth as soon as you walk in while the rest of the home features thoughtfully designed spaces that combine functionality and elegance, creating the perfect setting for your family’s memories. An entertainer’s kitchen with a stunning U-shaped island is the heart of the home creating the perfect place for hosting guests or gathering for family meals.

We’re so excited about this new addition to our collection and can’t wait for you to call it home!

#### FEATURES:

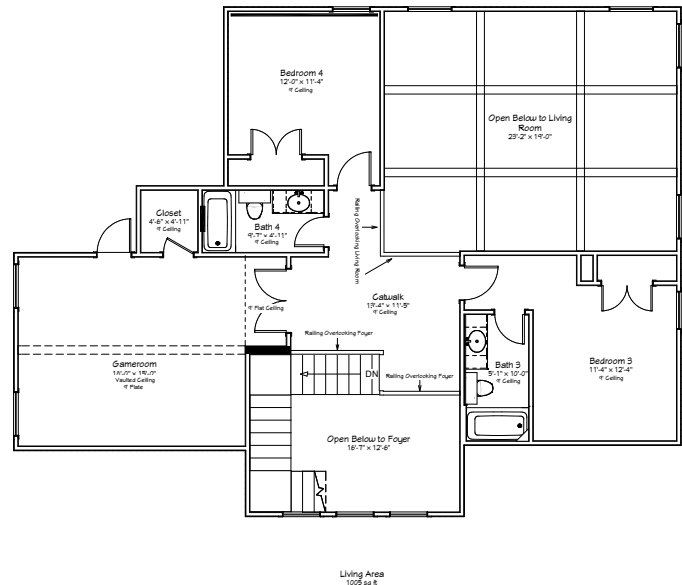
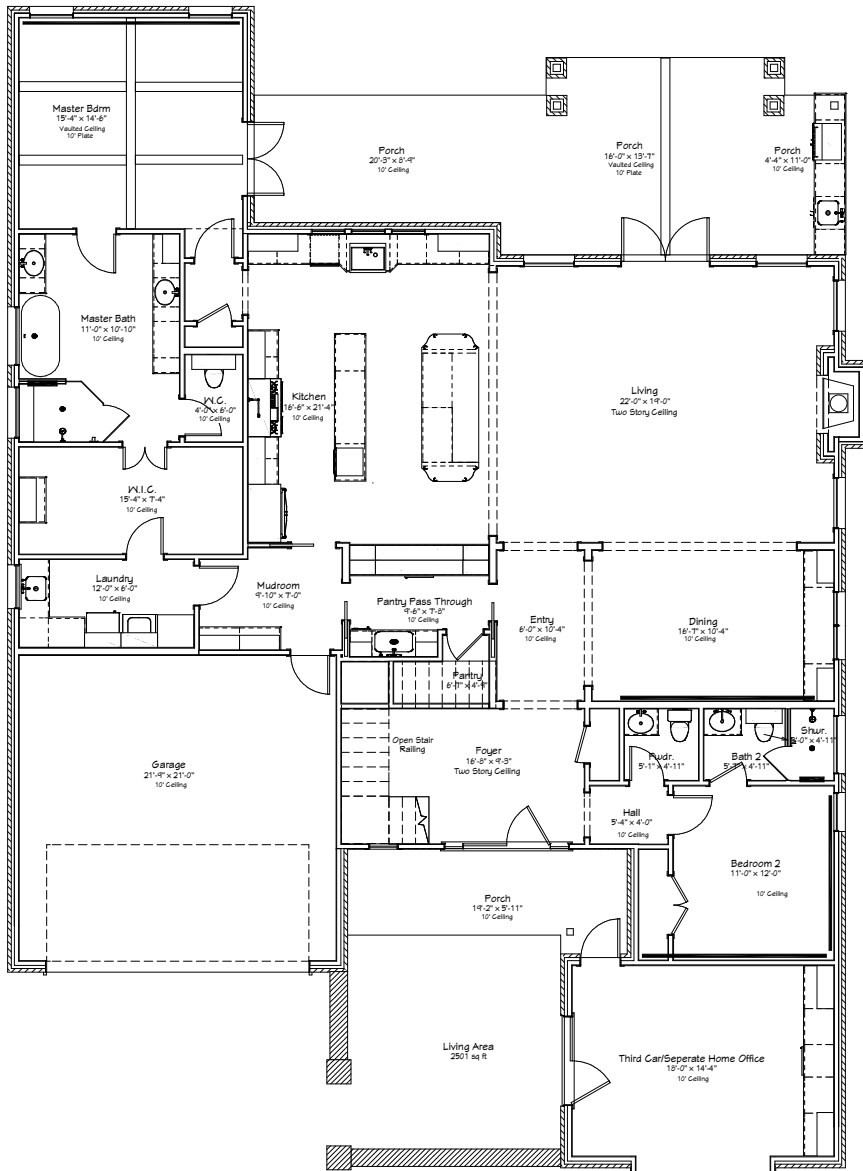
Custom Cabinetry | Quartzite, Quartz & Granite Countertops | Hardwood Flooring  
Outdoor Kitchen | Stainless Appliances | Custom Design Elements

Come Make Our House, Your Home.



Reece Homes  
979-635-4800  
info@reece-homes.com

## 7004 SKIPPING ROCK PATH



4 BDRM | 4.5 BATH | 3505 SF

**Built the way we live |** At Reece Homes we take great care in personalizing every home to meet each family right where they are. Truly unique, the Reece Homes building experience provides in house drafting, personalized design assistance, and constant communication throughout construction.

[WWW.REECE-HOMES.COM](http://WWW.REECE-HOMES.COM)