

# REECE HOMES

3653 SLOCUM HILL DRIVE



MISSION RANCH NEIGHBORHOOD

4 BDRM | 3 BATH | 2815 SF

One of Reece Homes' most beloved floor plans, The "Caroline" offers thoughtful design and versatile living across two spacious stories. This 4-bedroom, 3-bath home includes a private study, an upstairs game room, and a signature Reece Homes mudroom—making it as functional as it is beautiful. Bathed in natural light, the vaulted living space feels open yet defined, with a dedicated dining area that invites gathering and connection. The kitchen is a standout, featuring a large eat-in island, custom cabinetry, and abundant storage—designed to inspire both everyday meals and special occasions. Unwind in the luxurious master suite, where a garden tub and expansive walk-in shower offer a peaceful retreat at the end of the day. Balancing comfort, elegance, and livability, The Caroline is a home that feels just right—for today and for years to come.

#### FEATURES:

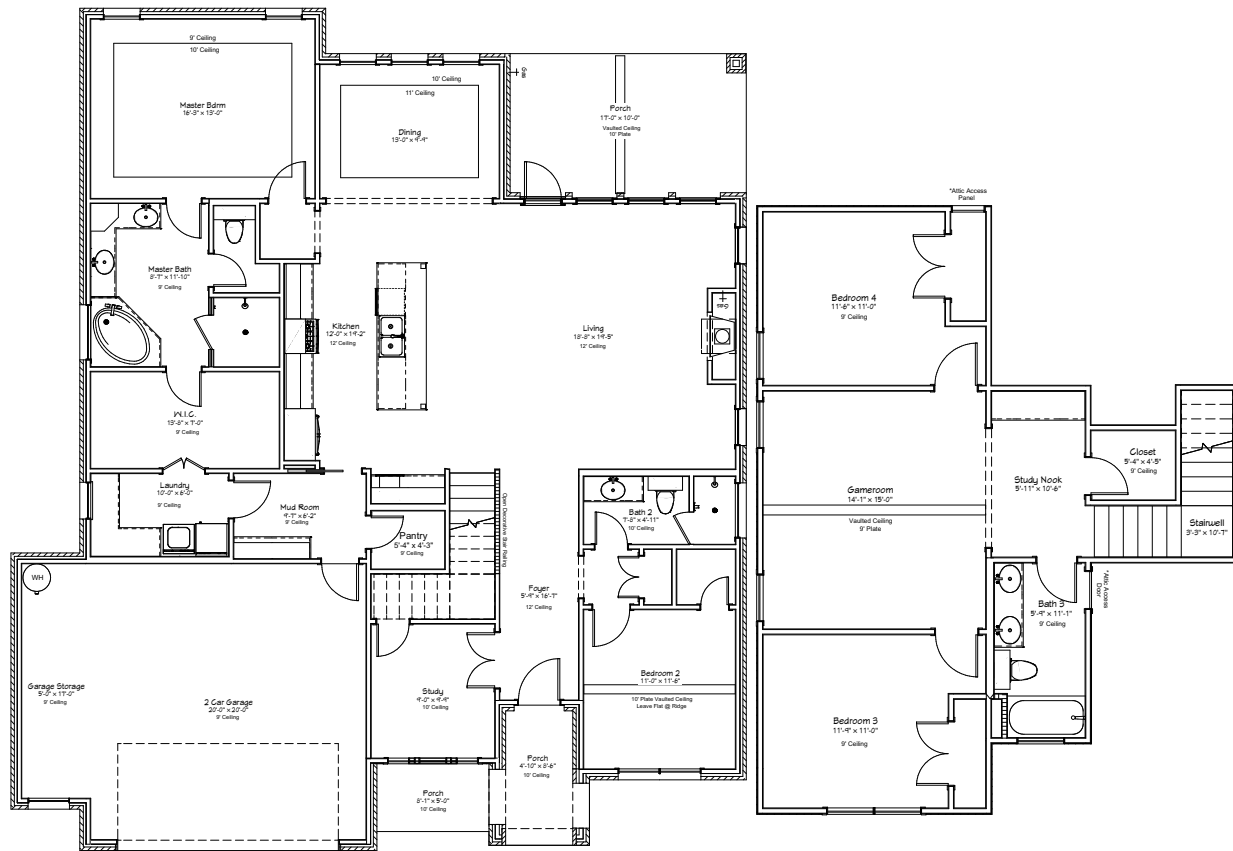
Custom Cabinetry | Quartz & Granite Countertops  
Wood Tile Flooring | Stainless Appliances | Custom Design Elements

Come Make Our House, Your Home.



Reece Homes  
979-635-4800  
info@reece-homes.com

3653 SLOCUM HILL DRIVE



4 BDRM | 3 BATH | 2815 SF

**Built the way we live |** At Reece Homes we take great care in personalizing every home to meet each family right where they are. Truly unique, the Reece Homes building experience provides in house drafting, personalized design assistance, and constant communication throughout construction.

WWW.REECE-HOMES.COM