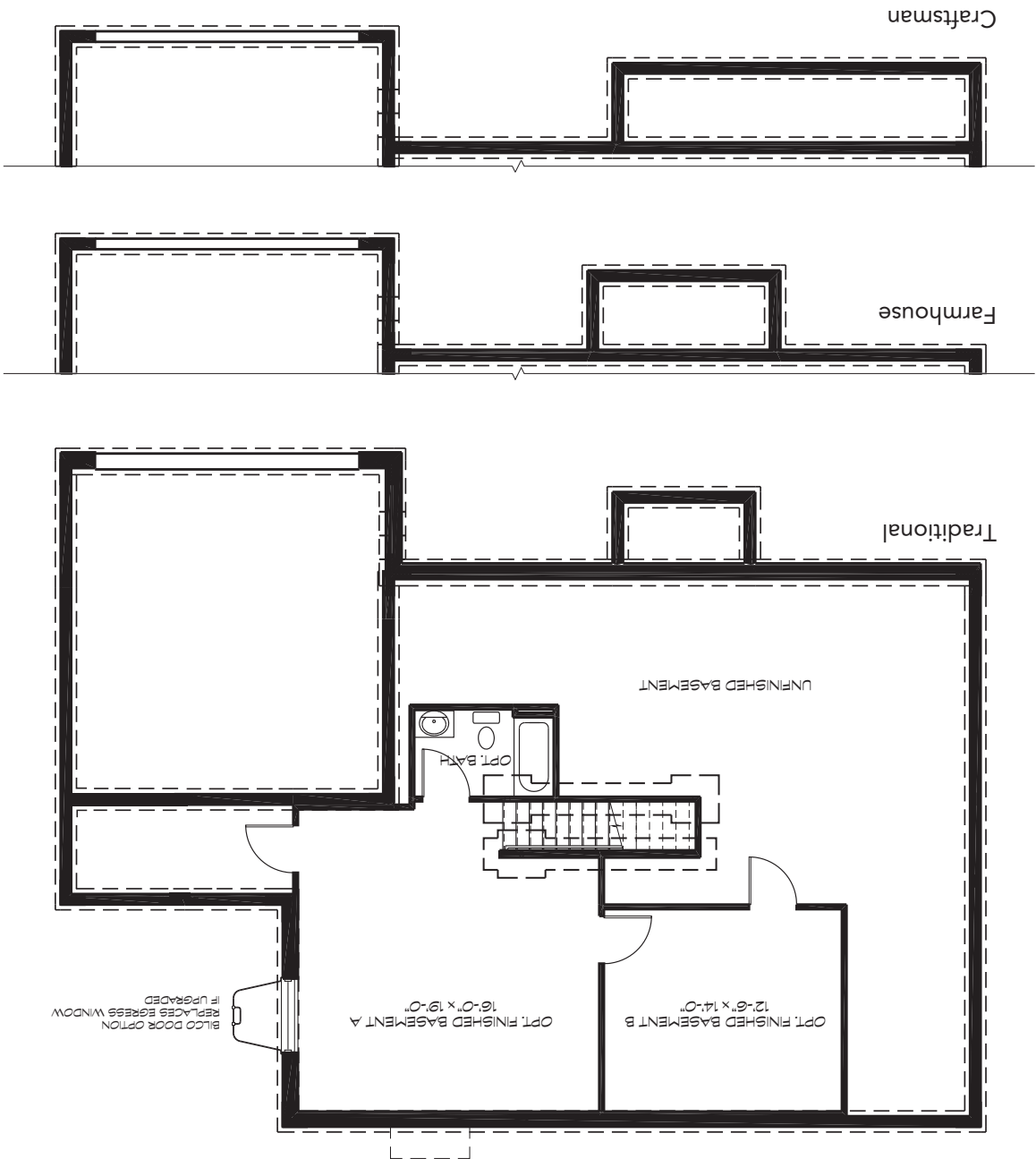




For more information, call 302-449-0280



Basement



THE BENNETT

- 4 bedrooms
- 2.5 baths
- 2-car garage
- 9' ceiling on first floor
- Private first-floor study
- Open-concept great room/breakfast area/kitchen
- Formal dining room
- Basement

THE RESERVE
AT PONDS OF ODESSA



CRAFTSMAN ELEVATION shown with standard stone water table



FARMHOUSE ELEVATION shown with standard stone water table



TRADITIONAL ELEVATION shown with optional brick water table



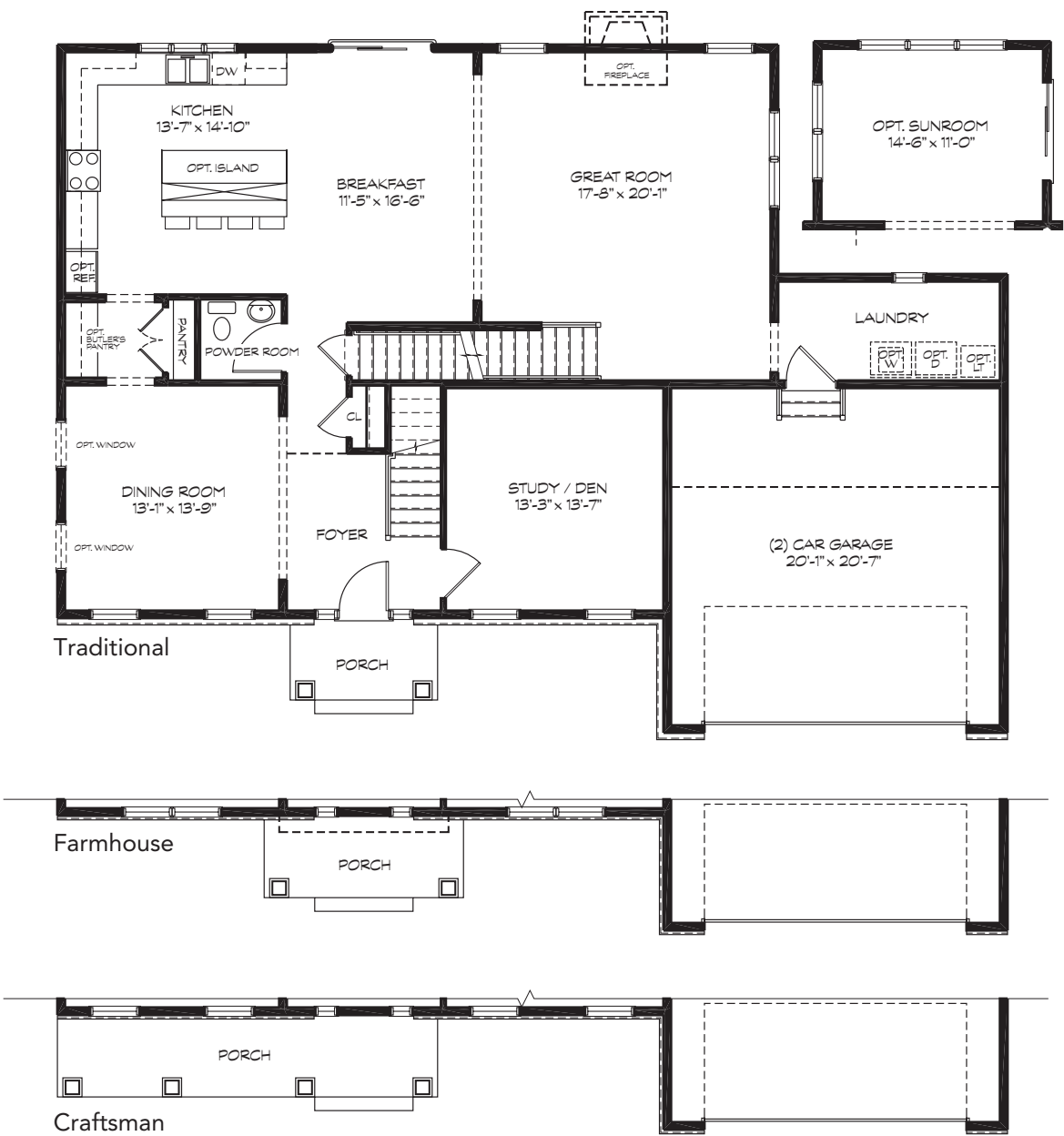
BENCHMARKBUILDERS.COM

Homes that are everything but average.

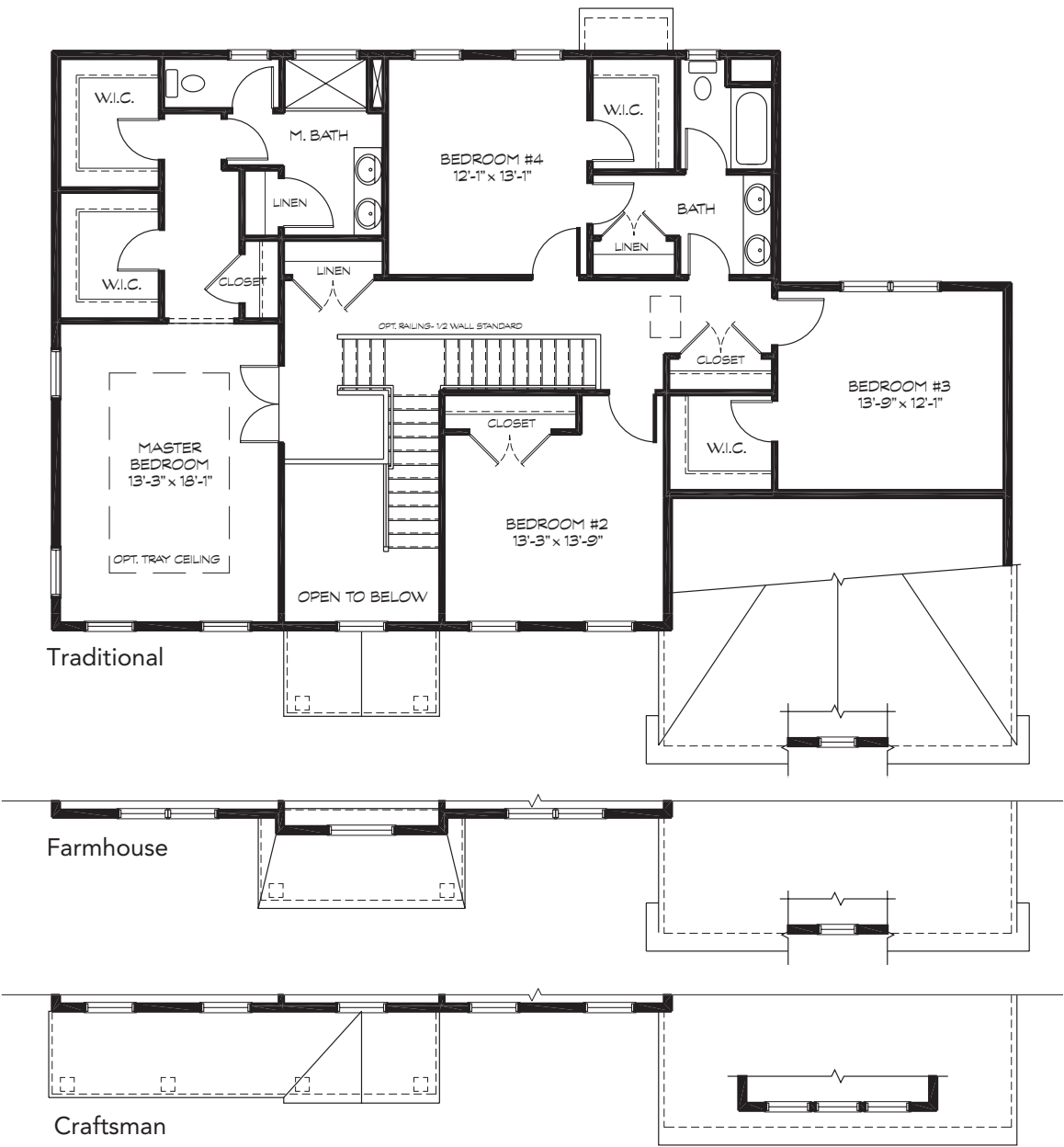
THE BENNETT



First Floor



Second Floor



REV. 1-26-23

Details and dimensions shown are approximate and subject to change. Illustrations are artist's concepts and may vary in detail from the actual plans and specifications. The right is reserved to make changes without notice or obligation. Floor plans represent various elevations. Other elevations have walls, windows and room sizes that may vary slightly and are not shown. Please consult with the community Sales Manager for alternate floor plans, options and features.

