

FLOORPLAN

Plan C410
Elevation A with
Manufactured Stone Veneer



American
Legend
HOMES

WWW.AMLEGENDHOMES.COM



FLOORPLAN

Plan C410



Elevation B with Stone



Elevation C



Plan C410
Revision 11/25/19

WWW.AMLEGENDHOMES.COM

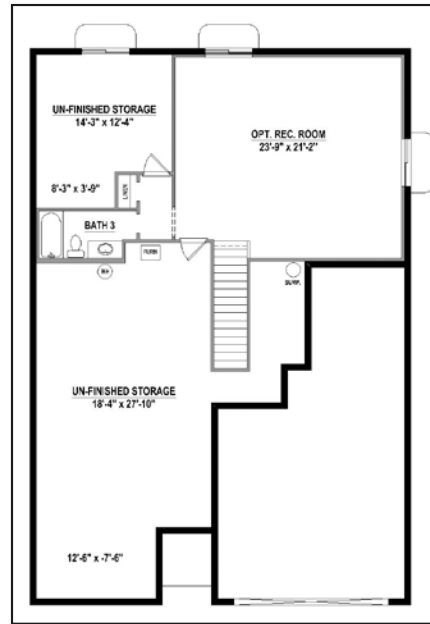
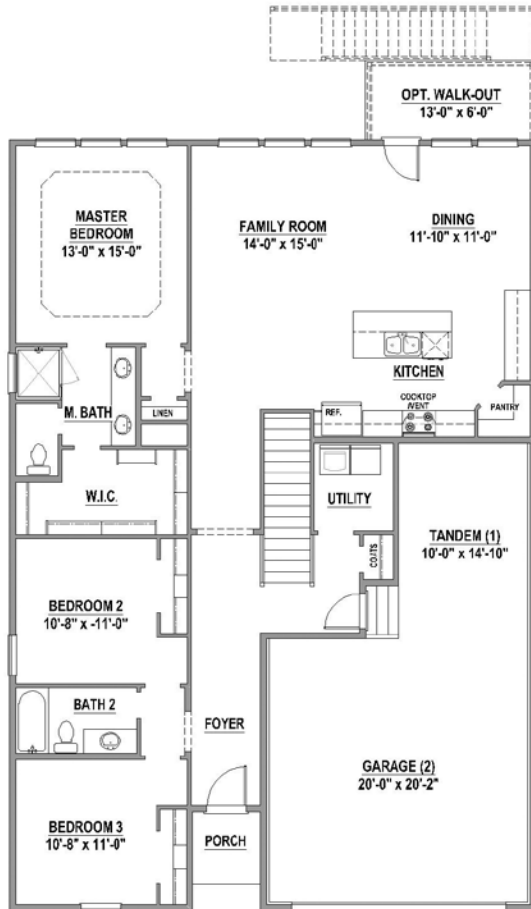
Prices, plans, specifications, square footage and availability are subject to change without notice or prior obligation. Square footage is approximate and may vary upon elevations and/or options selected. Elevation renderings are an artist rendering and are subject to change or modification without notice. Garage doors per community specifications. Please see Sales Representative for more information.



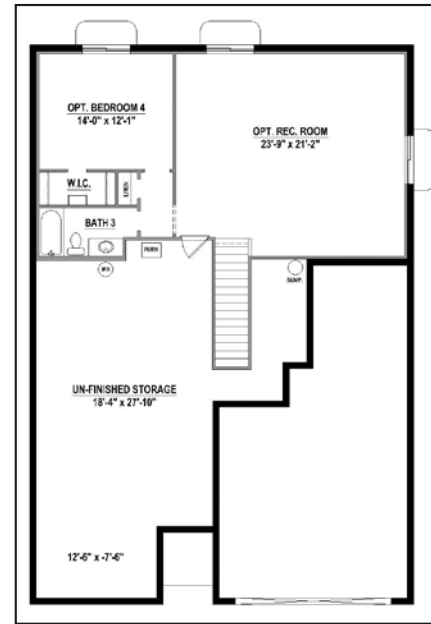
PLAN C410

1,665 SF

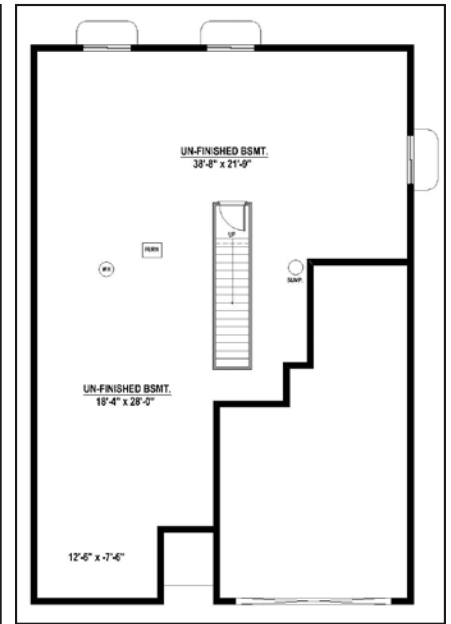
First Floor



Optional Rec Room
and Bath (705 SF)



Optional Rec Room,
Bedrooms 4 with Bath (934 SF)



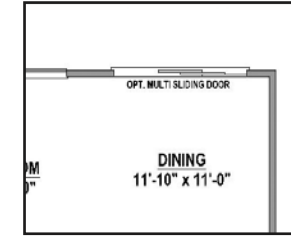
Optional A-Base

Features:

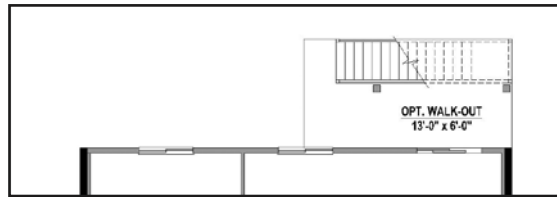
- 1 Story
- 3 Bedrooms
- 2 Full Baths
- 1 Dining Area
- 3-Car Garage



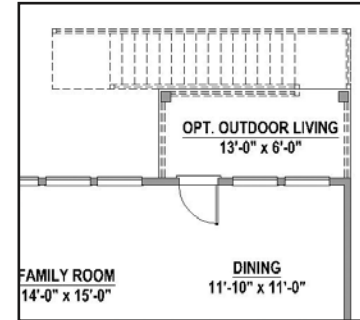
Optional Fireplace



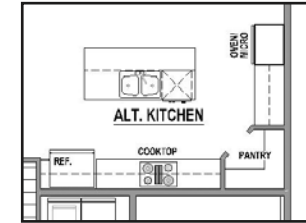
Optional Multi Sliding Doors



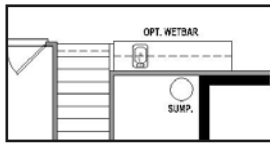
Optional Walk-Out Basement



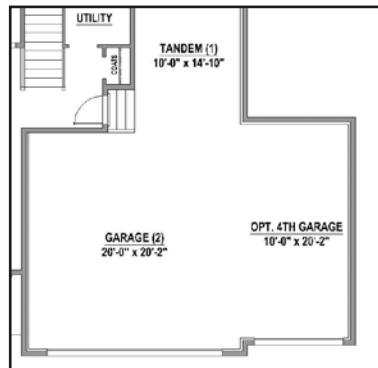
Optional Outdoor Living



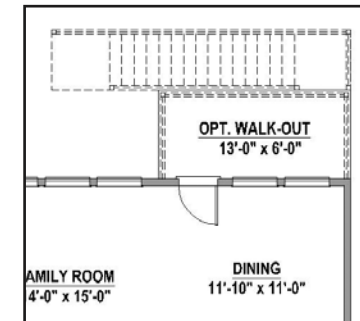
Optional Alternate Kitchen



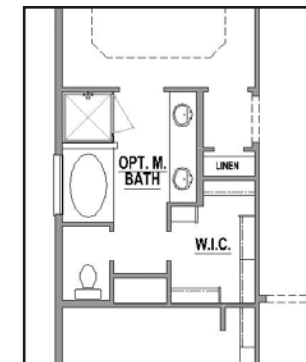
Optional Wet Bar



Optional 4th Garage



Optional Walk-Out Basement



Optional Master Bath

Projected HERS Score

57

Your home's HERS score is a projected score based on plans. The lower the number, the more energy efficient the home. To learn more, visit www.hersindex.com

Annual Savings

\$1,800

*Relative to an average U.S. Home

*This information is presented for education purposes only. The HERS index for a confirmed rating will be determined by a third party HERS rater based on data gathered from on-site observations and, if required, testing of rated features for a home as featured, opinionated, oriented, and/or built.
 +Standard new home is based on the RESNET Reference Home definition with a HERS index of 100 (based on the 2006 International Energy Conservation Code)
 ++Typical resale home is based on the U.S. Department of Energy definition with a HERS index of 130.