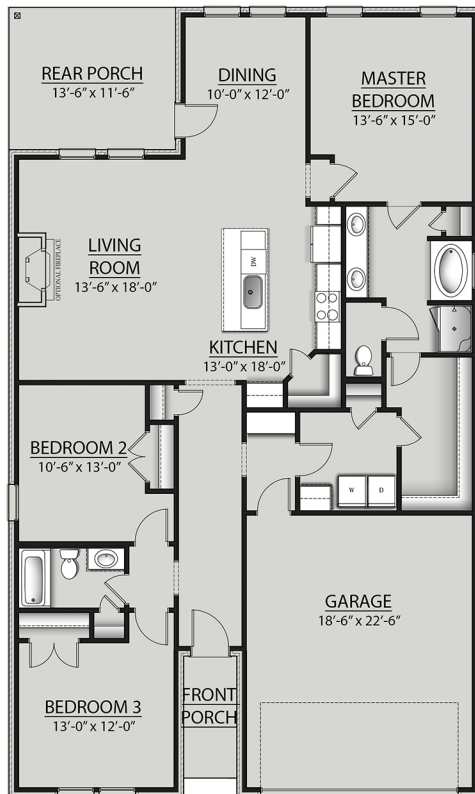


THE TRILLIUM U IV PLAN



Living Area

1858 Square Feet

Total Area

2523 Square Feet

Features

- Open Floor Plan
- Three Bedrooms, Two Bathrooms
- Brick, Stone & Siding Exterior
- Two Car Garage
- Recessed Canned Lighting in Kitchen
- Walk-In Pantry
- Boot Bench
- Double Master Vanity
- Walk-In Master Closet
- Garden Master Tub
- Separate Master Shower
- Two Car Garage
- Covered Rear Porch



Floor plans and elevations are subject to change without notice. Elevations and renderings are artistic conceptions and may not accurately depict home styles. Characteristics, including but not limited to windows, doors, plan configurations and orientations are subject to change per home site. Information contained in this flyer is subject to errors, omissions, changes, withdrawals and prior sales without notice.