

1575 Plan



Elevation A - Low Country



Elevation B - Craftsman



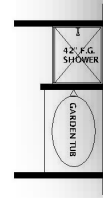
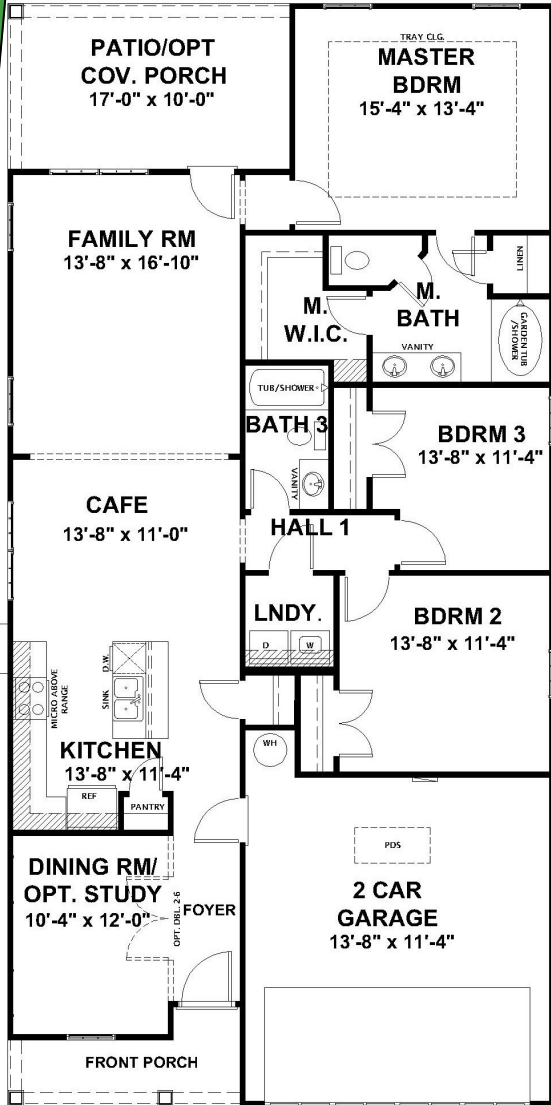
Elevation C - French Country

1575 Features

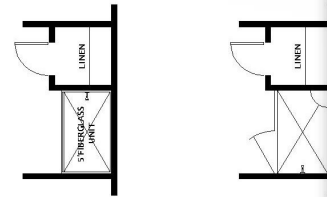
- 3 Bedrooms
- 2 Baths
- Dining Room
- Opt. Study
- Open Floor plan
- 2-Car Garage
-



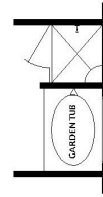
1575 Square Feet



OPT. MASTER BATH 1
SCALE 1/4" = 1'-0"



OPT. MASTER BATH 2 W/
OPT. TILE SHOWER



OPT. TILE SHOWER

1575

33'-0" X 66'-6"

FLOOR PLAN BASED ON ELEVATION A. SEE CONSTRUCTION DRAWINGS FOR OPTIONS AND ALTERNATE VERSIONS.

FLOOR PLANS AND ELEVATIONS ARE SUBJECT TO CHANGE. FLOOR PLAN DIMENSIONS ARE APPROXIMATE. CONSULT WORKING DRAWINGS FOR ACTUAL DIMENSIONS AND INFORMATION. ELEVATIONS/RENDERINGS ARE ARTISTS CONCEPTION.

"Window grid patterns may vary. Standard window grid pattern on all elevations will be 2 over 1 unless buyer chooses another available grid pattern with an additional investment."

Ivey Homes:

672 Industrial Park Drive, Suite 200

Evans, GA 30809

706.868.9363

Actual construction may vary from plan shown. Please consult working drawings to view elevation and floor plan to be built. Copyrighted 2019 by Ivey Residential, LLC