

A/ FARMHOUSE



B/ CRAFTSMAN



A/ FARMHOUSE



\*Not all elevations are available in all communities.

## About This 2-Story, Slab Home



3 Beds



2 Baths



1,478 sqft

The Caribou offers a thoughtfully designed 3-bedroom, 2-bath layout with 1,478 square feet of well-planned living space. The open kitchen connects seamlessly to the main living area, creating a welcoming space for both daily life and entertaining. Upstairs, the primary suite serves as a private retreat with its own bathroom and walk-in closet, while two additional bedrooms provide versatility for guests, family members, or a home office. Smart design choices throughout enhance comfort and livability. Low-maintenance xeriscape landscaping allows you to enjoy the outdoors with ease, and a detached garage adds both character and convenient storage. Reach out to your Community Sales Manager to learn more.

# Caribou

INSPIRE SERIES / 707

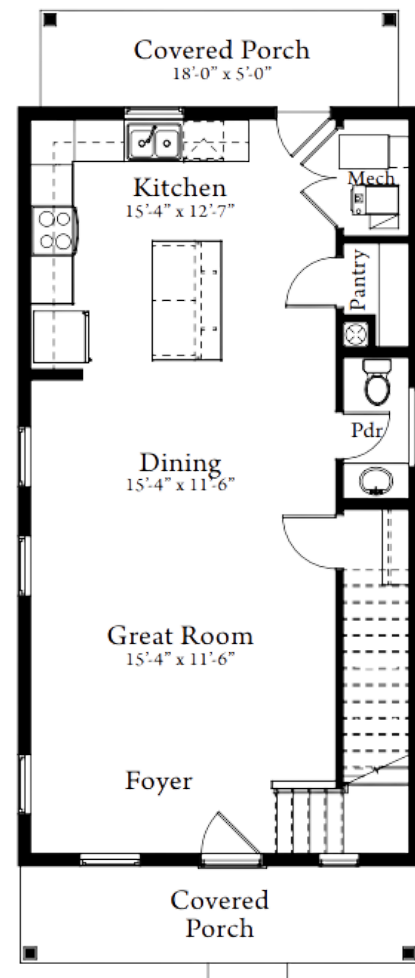
- Total Finished - 1,478 sq. ft.
- Slab on Grade Product
- 2 Car Garage
- Fencing and Xeriscaping included

## Available Upgrades\*

Please see your Community Sales Manager for an updated list of available upgrades.

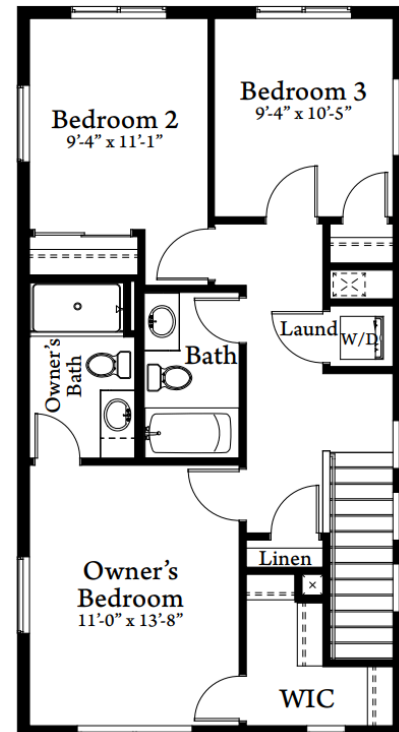
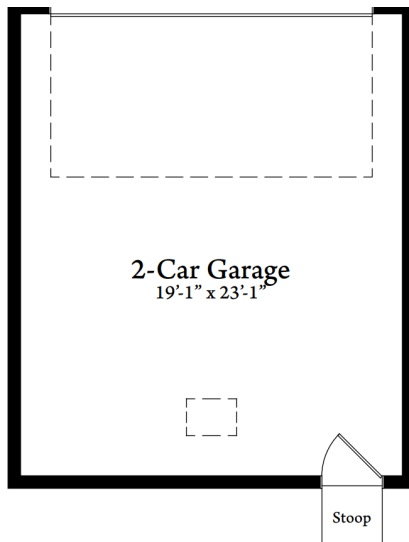


Scan to learn more



## Garage Options

OPTIONAL UPGRADES



Builder reserves the right to modify or change floor plans, features, and pricing without notice. All floor plans and renderings are conceptual in nature and may vary from actual homes. Square footages are approximate and may vary. Not all options and elevations offered in every community. Last updated 9/23/25.