

DESIGN

CARMINE - 4461_F



Hill Country



Tudor Revival



Modern Farmhouse



Craftsman



Spanish Eclectic



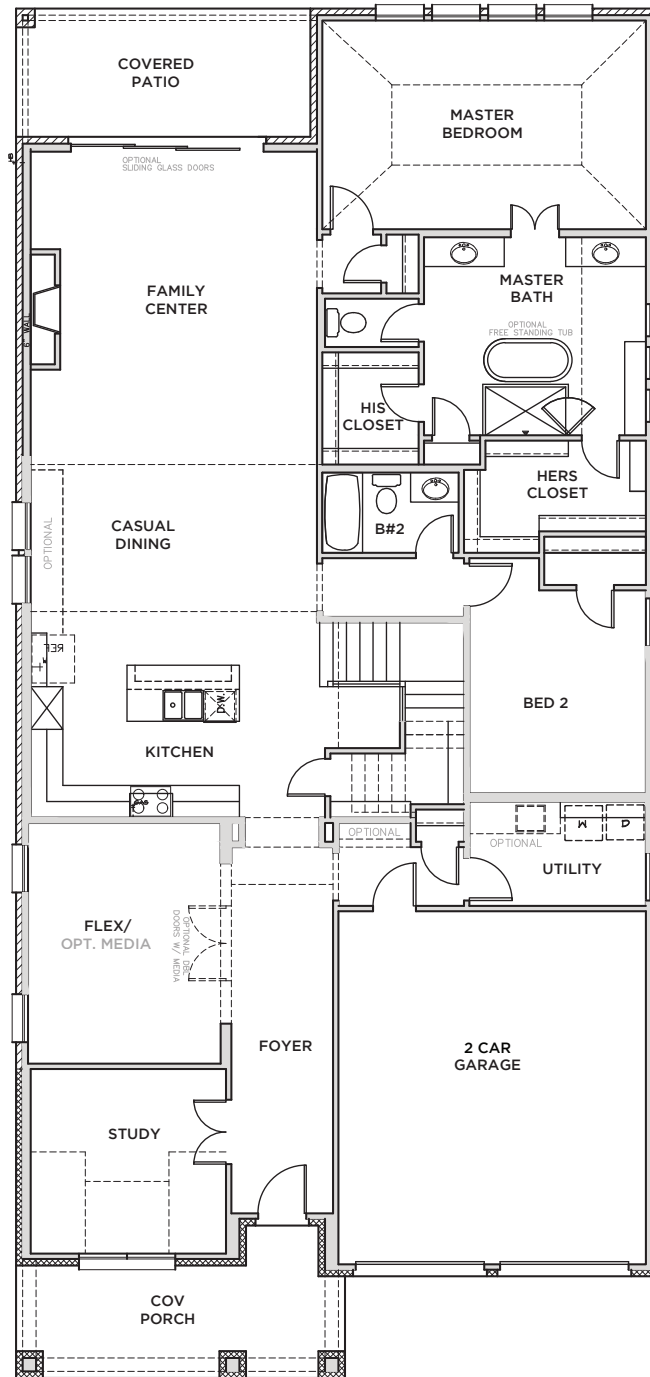
All Product including Architectural Designs, ©2000-2025, Shaddock Homes, LTD., All rights reserved. There may be existing or future design changes made in the floorplans, building products, methods, square footage, or designs used in our homes that are not reflected in our information, sales center or in our models. The materials, designs, square footages, features, and amenities shown are based upon current development plans, which are subject to change without notice. No guarantee is made that the designs, square footages, materials, features, and amenities depicted by artist's renderings or otherwise described will be built, or if built, will be of the same type, size or nature as depicted or described. All stone elevations, metal roofs, cast stone door and window headers and solid sawn cedar posts are optional, but available via change order. Front doors will match the specification sheet or chosen door upgrade. Prices and terms subject to change without notice. REVISION DATE: 7.28.2023

CARMINE 4461F (7.28.23)

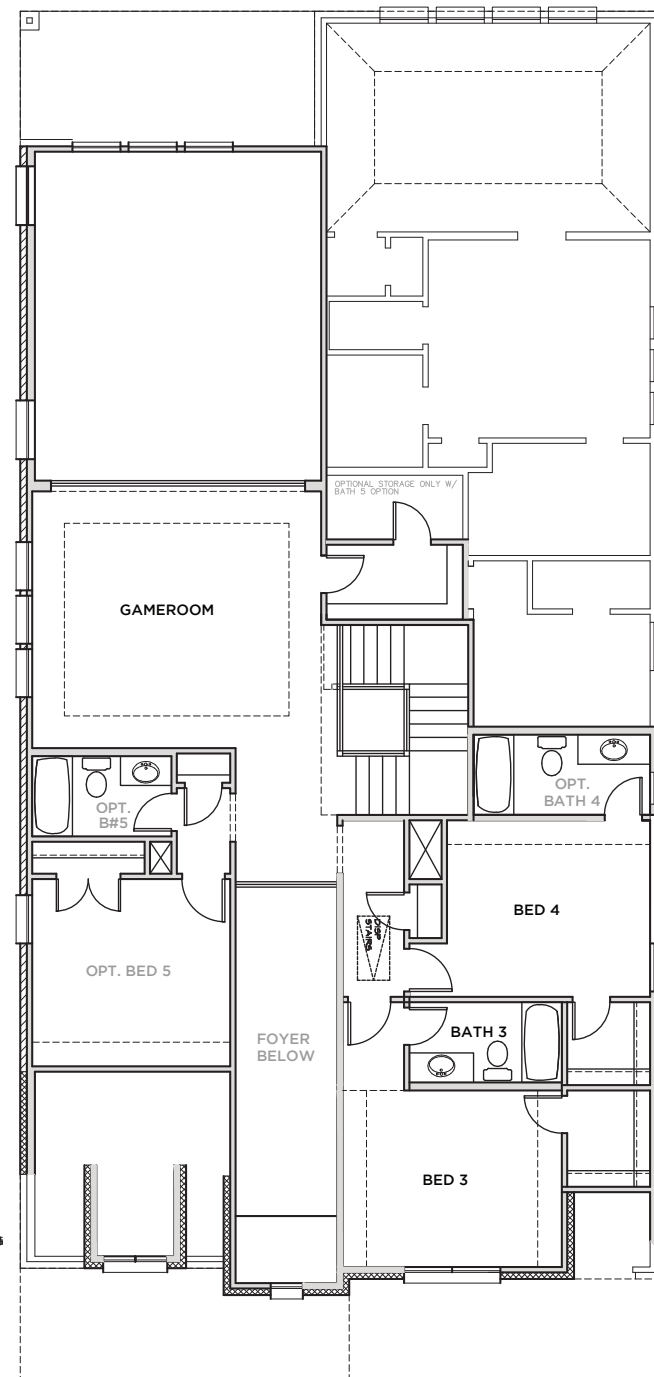
First Floor	S.FT	2532
Second Floor		899
Total Living Area		3431
2 Car Garage		457
Entry		154
Covered Patio		154
Total Area		4189

Options		
Bed 5/Bath 5		181
Bath 4		64

SHADDOCK HOMES



FIRST FLOOR



SECOND FLOOR