



HARPER 2  
ELEVATION A

# The Harper II



## FEATURES:

4 Bedroom  
2.5 Bath  
1,889 Square Feet



ELEVATION A4 FULL BRICK



ELEVATION B

GREAT  
**So**uthern  
HOMES

GreatSouthernHomes.com



Plans and other elevations may be shown with optional brick and/or upgrades. All elevations and plans may not be available in all communities. See on-site agent for details. See opposite side for floor plan.





HARPER 2  
ELEVATION B2  
BRICK FRONT

# The Harper II



**FEATURES:**  
4 Bedroom  
2.5 Bath  
1,889 Square Feet



ELEVATION B4 FULL BRICK



ELEVATION C

GREAT  
**GSH**  
*Southern*  
HOMES

GreatSouthernHomes.com



Plans and other elevations may be shown with optional brick and/or upgrades. All elevations and plans may not be available in all communities. See on-site agent for details. See opposite side for floor plan.





# The Harper II



## FEATURES:

4 Bedroom  
2.5 Bath  
1,889 Square Feet



GREAT  
**Southern**  
HOMES

GreatSouthernHomes.com



Plans and other elevations may be shown with optional brick and/or upgrades. All elevations and plans may not be available in all communities. See on-site agent for details. See opposite side for floor plan.

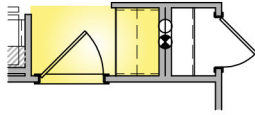


# The Harper II

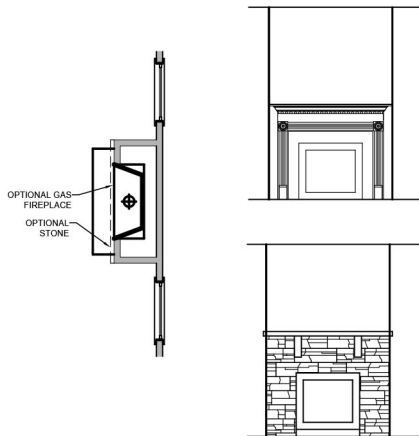


## FEATURES:

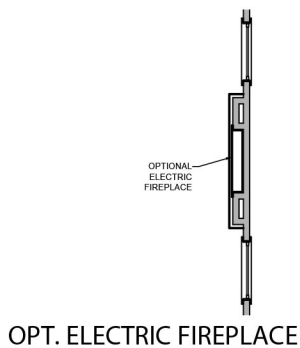
4 Bedroom  
2.5 Bath  
1,889 Square Feet



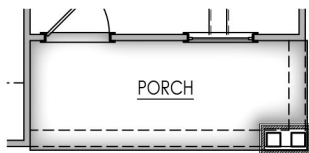
OPT. CABINETS @ GARAGE ENTRY



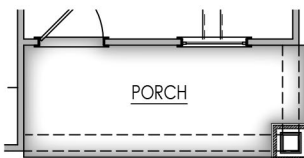
OPT. GAS FIREPLACE



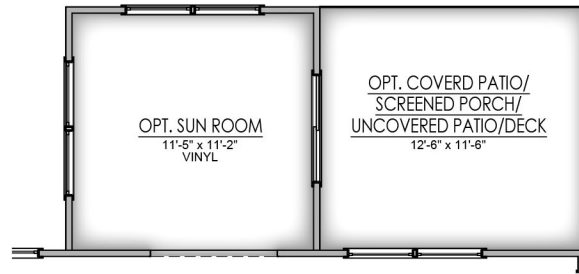
OPT. ELECTRIC FIREPLACE



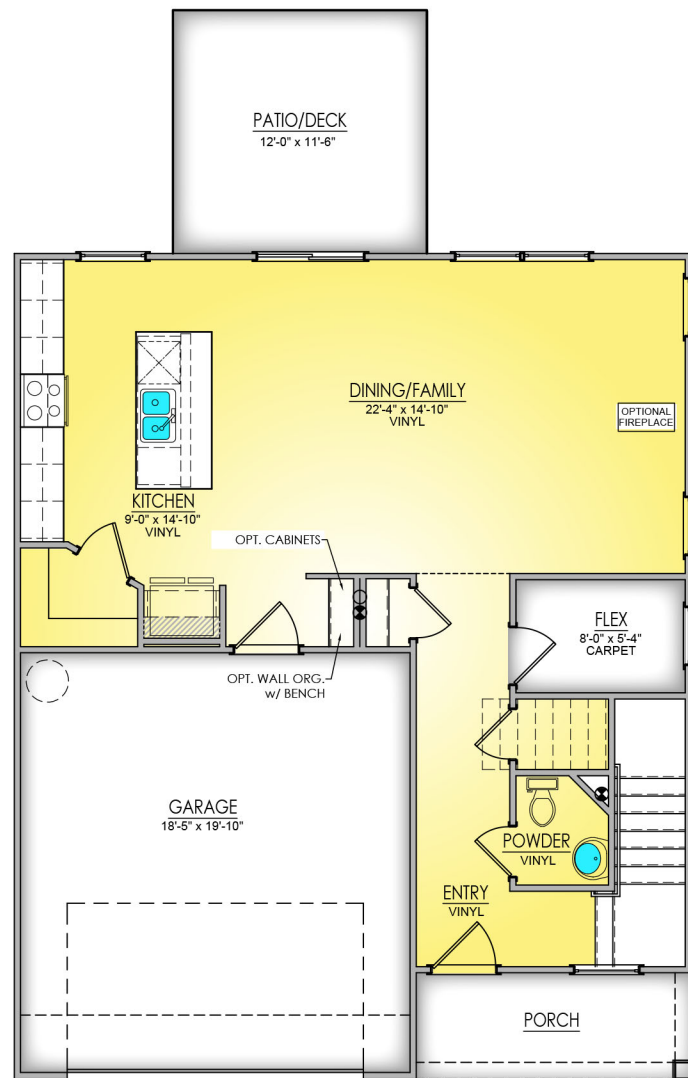
PORCH @ ELEV. C



PORCH @ ELEV. B



OPT. SUNROOM/PATIO OR DECK



MAIN LEVEL - A, G, & H

GREAT  
**Southern**  
HOMES

GreatSouthernHomes.com



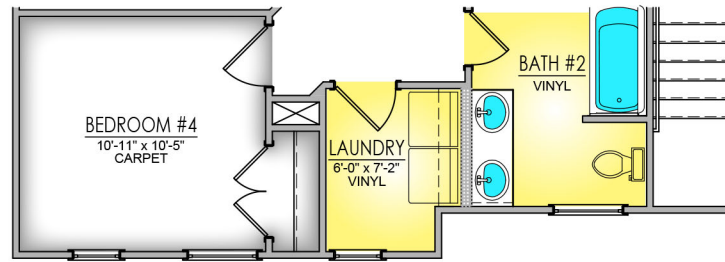
Plans and other elevations may be shown with optional brick and/or upgrades. All elevations and plans may not be available in all communities. See on-site agent for details. See opposite side for floor plan.

# The Harper II

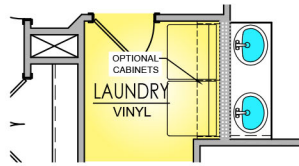


## FEATURES:

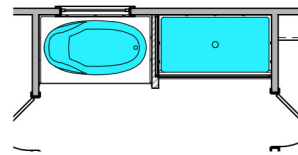
4 Bedroom  
2.5 Bath  
1,889 Square Feet



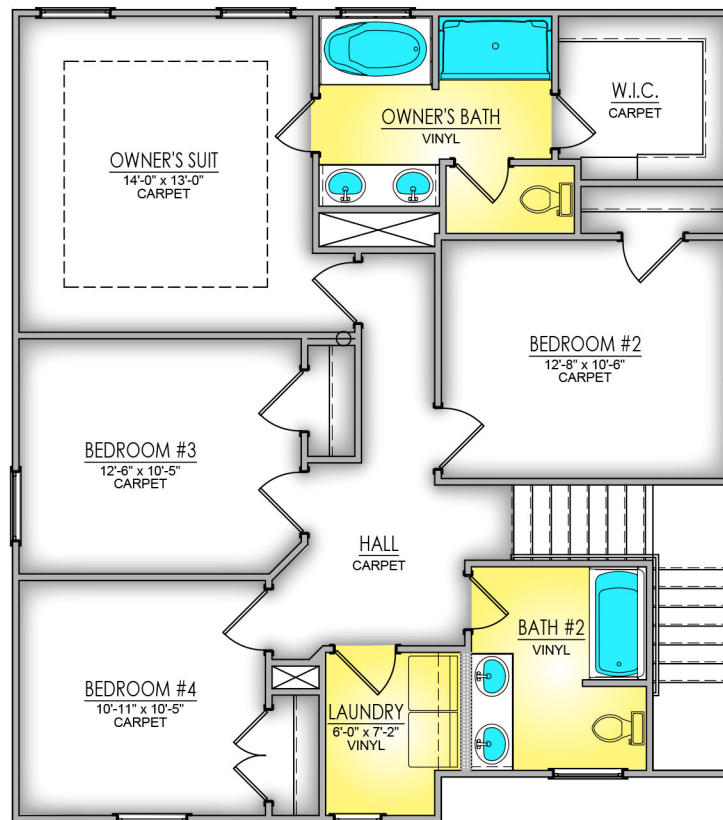
SECOND FLOOR PLAN - ELEV. C



OPT. LAUNDRY CABINETS



OPT. TILED SHOWER



SECOND LEVEL