



Somerset

DREAM SERIES / 506



C / CRAFTSMAN



F / FARMHOUSE



3 Beds



2 Baths



1,570 sqft

About This Ranch-Style, Slab Home

The Somerset plan presents a living space that highlights a bright and airy atmosphere with natural light pouring in from all directions. Offering up a separate dining space for formal entertaining, this is built with flexibility and options in mind. Boasting a luxurious split master suite, when you enter the spa-like bathroom, you'll feel like you're in your own retreat. See a Community Sales Manager for more information.

Somerset

DREAM SERIES / 506

- Total Finished - 1,570 sq. ft.
- Slab on Grade Product
- 3 Car Garage

Available Upgrades*

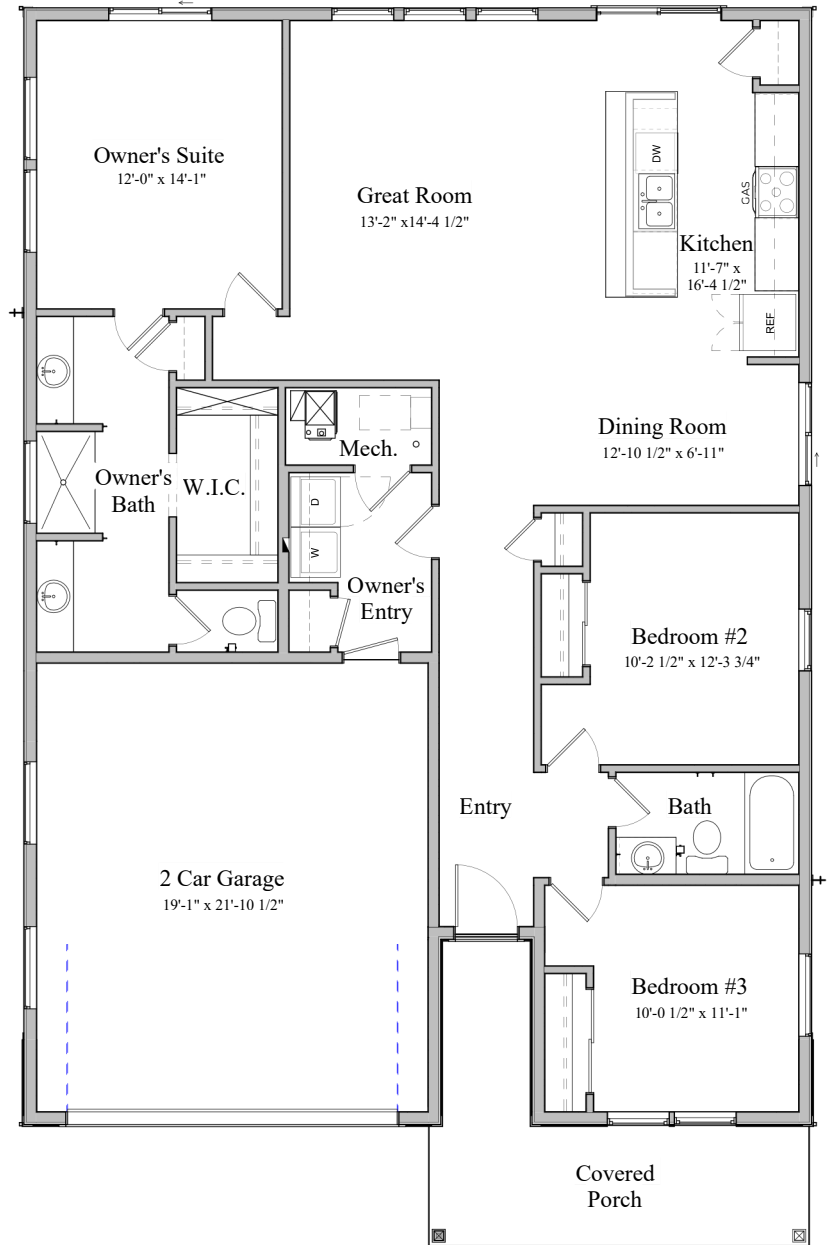
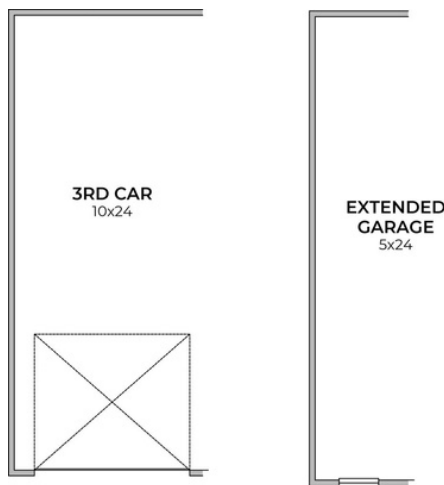
*Please see your Community Sales Manager for an updated list of available upgrades.



Scan to learn more

Garage Options

AVAILABLE UPGRADES



Builder reserves the right to modify or change floor plans, features, and pricing without notice. All floor plans and renderings are conceptual in nature and may vary from actual homes. Square footages are approximate and may vary. Not all options and elevations offered in every community. Last updated 6/5/2025.