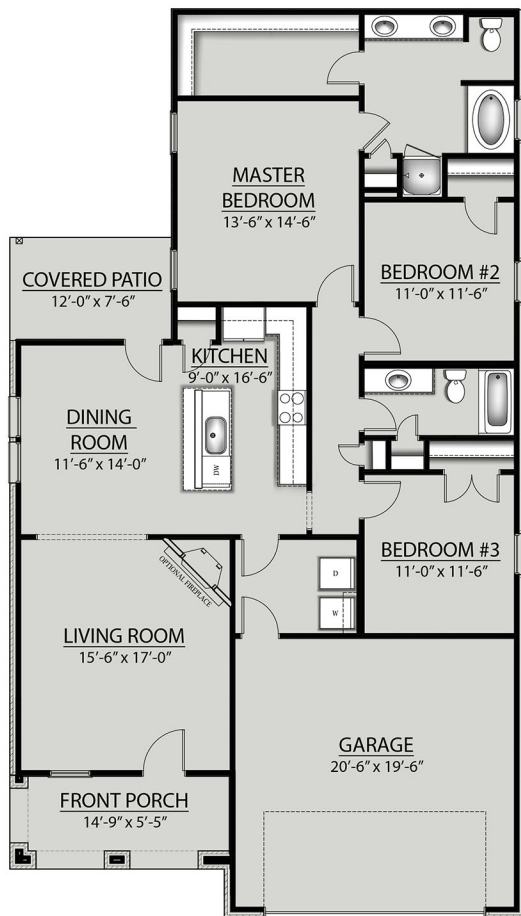


THE FAREHAM B V PLAN



Living Area

1613 Square Feet

Total Area

2255 Square Feet

Features

- Open Floor Plan
- Three Bedrooms, Two Bathrooms
- Two Car Garage
- Brick, Stucco, & Siding Exterior
- Covered Patio
- Double Master Vanity
- Garden Master Tub
- Separate Master Shower
- Walk-In Master Closet



Floor plans and elevations are subject to change without notice. Elevations and renderings are artistic conceptions and may not accurately depict home styles. Characteristics, including but not limited to windows, doors, plan configurations and orientations are subject to change per home site. Information contained in this flyer is subject to errors, omissions, changes, withdrawals and prior sales without notice.