

DESIGN

CARMINE - 4461F



Hill Country



Tudor Revival



Modern Farmhouse



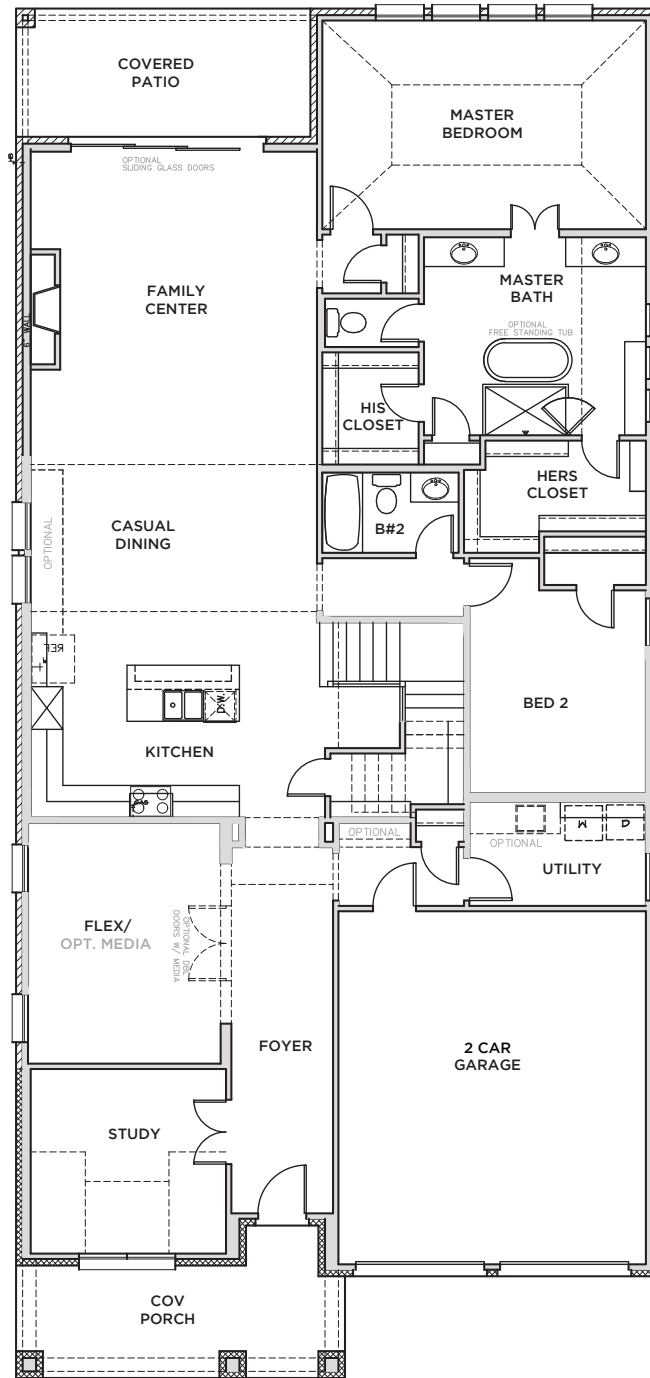
Craftsman



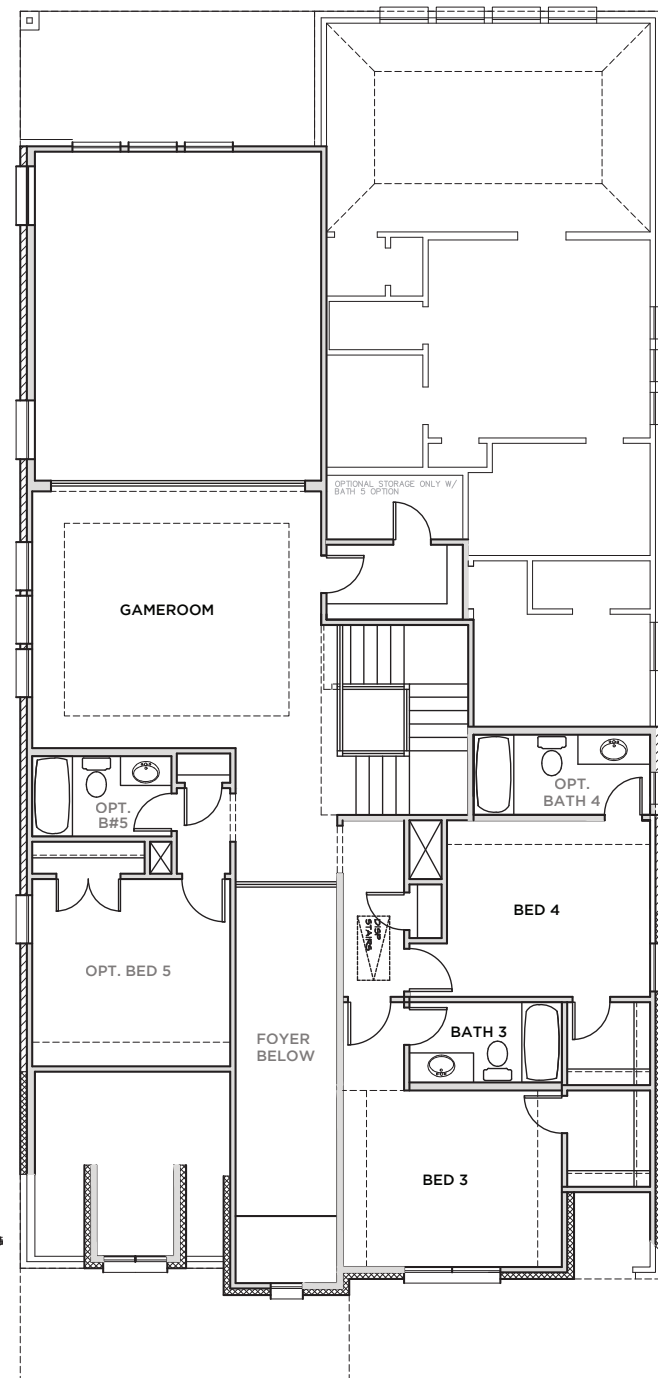
Spanish Eclectic



All Product including Architectural Designs, ©2000-2023, Shaddock Homes, LTD., All rights reserved. There may be existing or future design changes made in the floorplans, building products, methods, square footage, or designs used in our homes that are not reflected in our information, sales center or in our models. The materials, designs, square footages, features, and amenities shown are based upon current development plans, which are subject to change without notice. No guarantee is made that the designs, square footages, materials, features, and amenities depicted by artist's renderings or otherwise described will be built, or if built, will be of the same type, size or nature as depicted or described. All stone elevations, metal roofs, cast stone door and window headers and solid sawn cedar posts are optional, but available via change order. Front doors will match the specification sheet or chosen door upgrade. Prices and terms subject to change without notice. **REVISION DATE: 7.28.2023**



FIRST FLOOR



SECOND FLOOR

CARMINE 4461F (7.28.23)

	S.FT
First Floor	2532
Second Floor	899
Total Living Area	3431
2 Car Garage	457
Entry	154
Covered Patio	154
Total Area	4189

Options

Bed 5/Bath 5	181
Bath 4	64

SHADDOCK HOMES