

# Inwood



1,769 sq ft



3 bed



2 bath



a

mountain cottage



b

modern



e

craftsman



f

modern

## FEATURES YOU'LL LOVE ABOUT THIS HOME

stunning foyer for  
greeting guests

tall ceilings throughout the main  
living area and master suite

sizable kitchen island for  
cooking and homework

large windows with views of the  
patio from the living area

walk-in pantry and master closet  
providing generous storage



**IDEAL**  
homes | neighborhoods®



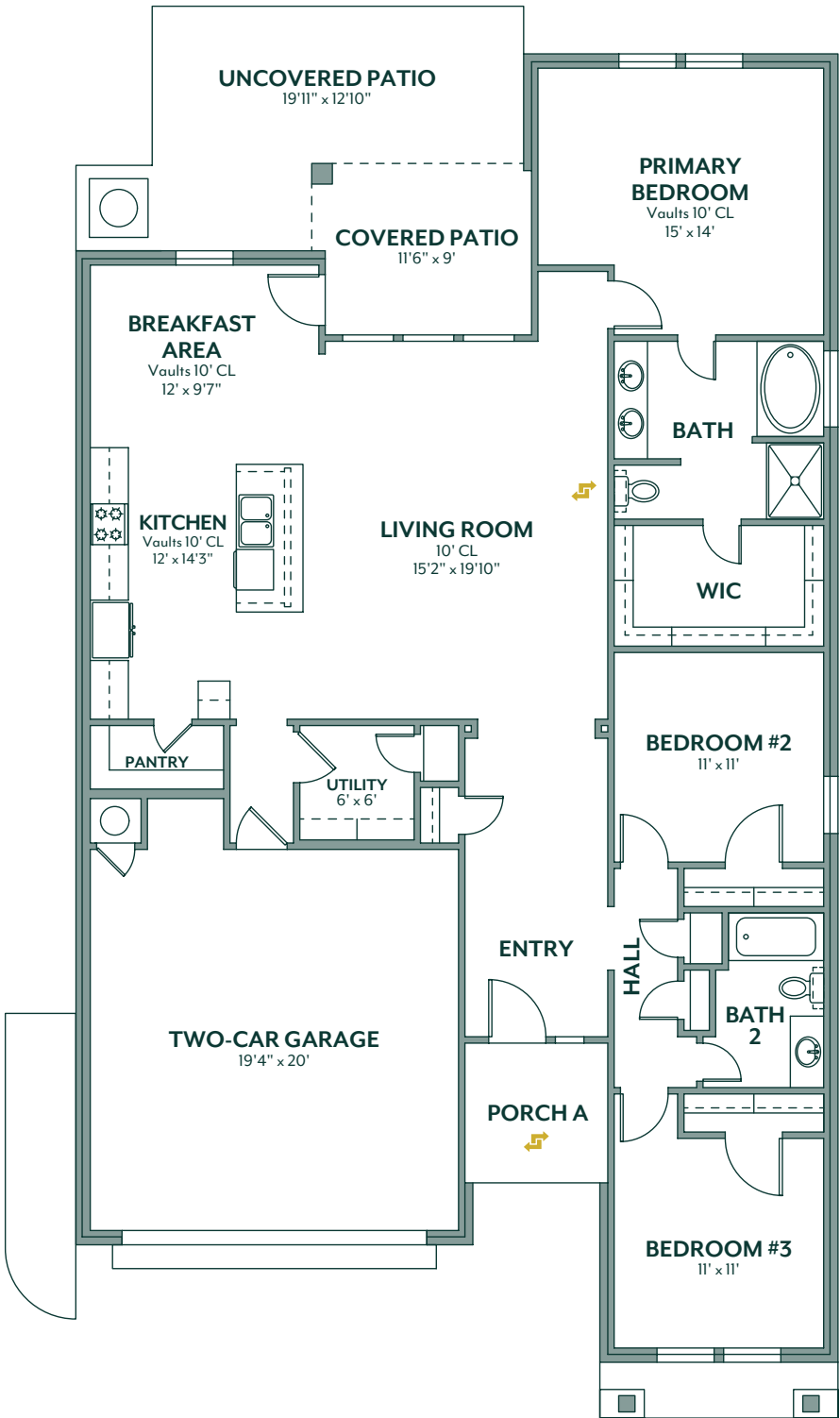
### HERE'S HOW WE DEVELOP EVERY IDEAL FLOOR PLAN:

*We consider everything ...*

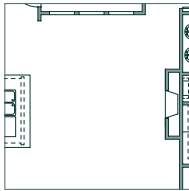
- sight lines & traffic flow
- furniture placement
- usable space
- architectural details
- window placement & size for optimal lighting
- function & low maintenance needs

405.364.1152

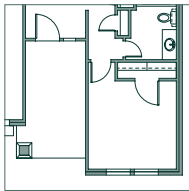
[www.idealhomes.com](http://www.idealhomes.com)



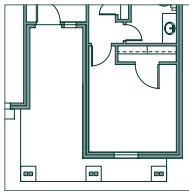
✓ customize this plan



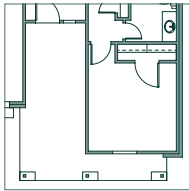
fireplace



porch b



porch e



porch f



Scan the code to view a **photo gallery & included features** for the Inwood floor plan