



# AVONLEY HOMES

2821 SPECTOR DRIVE



AUSTIN'S COLONY NEIGHBORHOOD

4 BDRM | 3 BATH | 2120 SF

Discover the Laurel, a thoughtfully designed home that perfectly blends style, comfort, and functionality. This 4 bedroom, 3 bathroom floor plan offers the flexibility today's homeowners are looking for. The open-concept layout is highlighted by a stunning vaulted family room with a cozy wood-burning fireplace, creating the perfect gathering space for everyday living and entertaining.

The spacious kitchen features a large island, walk-in pantry, and seamless flow into the dining and living areas, making hosting family and friends effortless. Tucked away for privacy, the luxurious owner's suite boasts a spa-inspired bathroom, oversized walk-in closet, and plenty of room to unwind after a long day.

#### FEATURES:

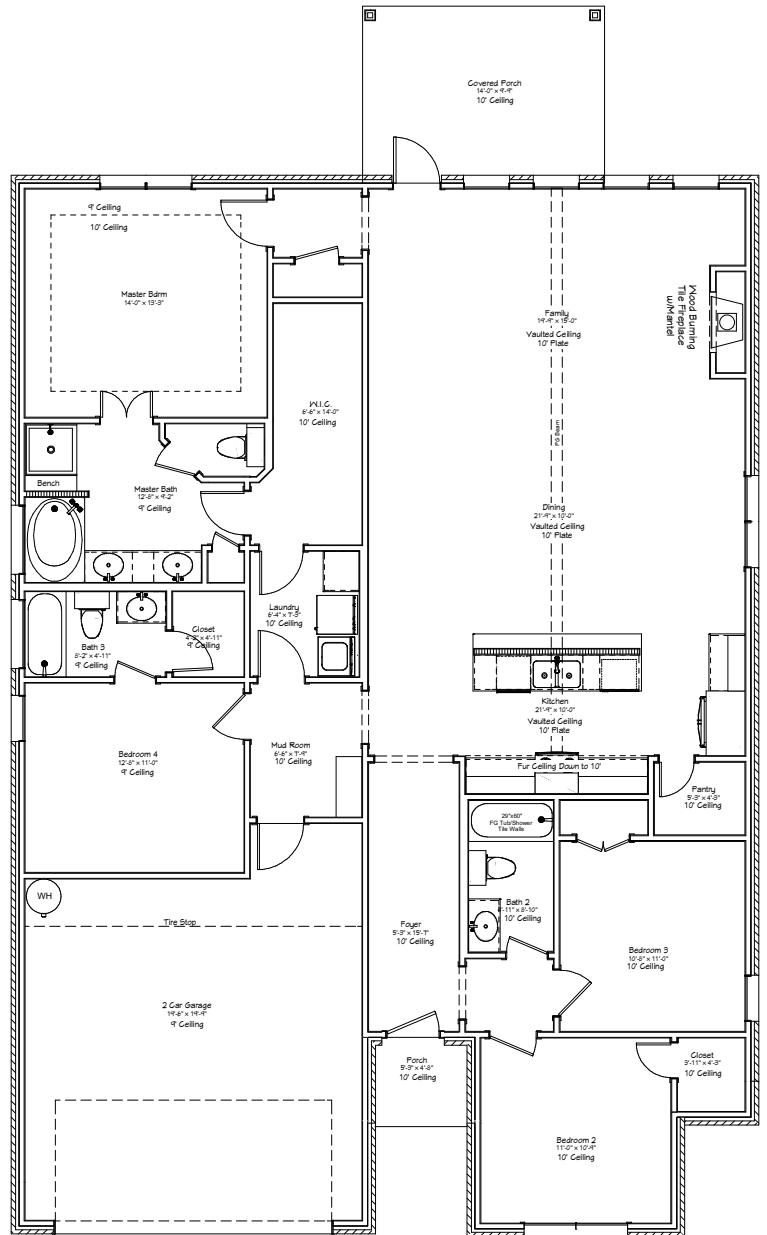
Mudroom Cabinetry | Quartz Countertops  
Stainless Appliances | Wood Burning Fireplace | Covered Back Porch

## COME HOME TO AVONLEY



Avonley Homes  
979-321-7200  
info@avonleyhomes.com

# 2821 SPECTOR DRIVE



4 BDRM | 3 BATH | 2120 SF