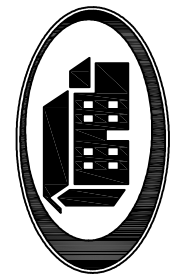


SAXIS
32' x 36'
1152 SQ. FT.

Porch by Builder
18'-0" x 6'-0"



BERACAH HOMES

9590 Nanticoke Business Park Drive
Greenwood, Delaware 19950
www.beracahomes.com

CUSTOMER

DATE: ??-??-???

SCALE: AS NOTED

BUILDER

DRAWN
REVISION: Michael Roup
Saxis_PD1

Ranch: 32' x 36' (Saxis)

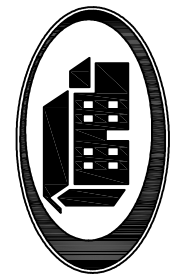
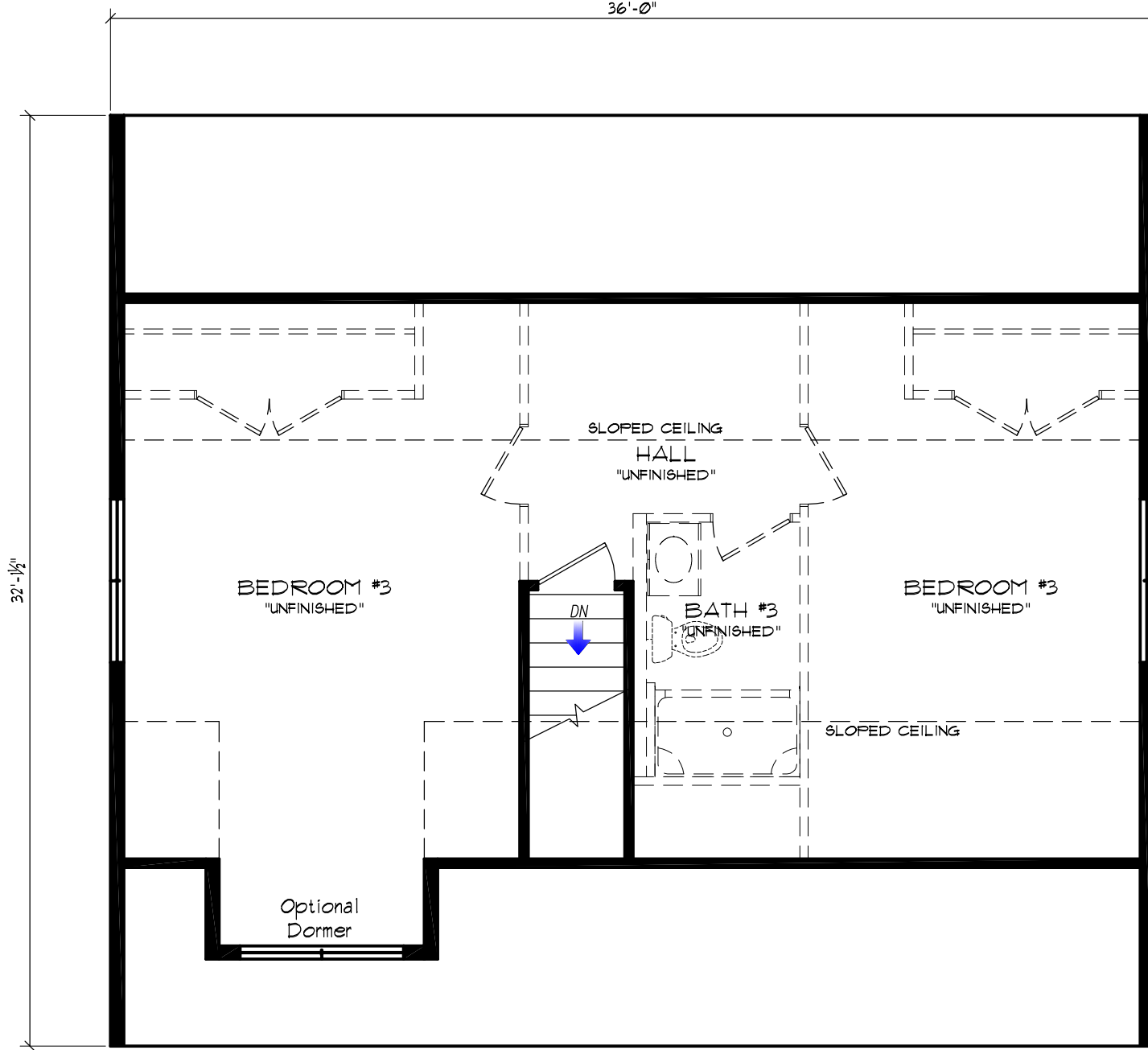
State, County, City

SHEET:

L1

PROJECT:

00-0000



BERACAH HOMES

9590 Nanticoke Business Park Drive
 Greenwood, Delaware 19950
 www.beracahomes.com

BUILDER

CUSTOMER

DATE: ??-??-???

SCALE: AS NOTED

DRAWN

REVISION: Michael Roup
 Saxis_PD1

Ranch: 32' x 36' (Saxis)

HOUSE STYLE:

State, County, City

SHEET:

L1.1

PROJECT:

00-0000

1/6/2012 11:20 AM



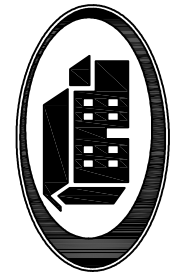
FRONT ELEVATION

Shown w/ the following options not included in base price:

- * 8' Dormer w/ 2-21036 Windows
- * Window Lineals ILO Shutters on Dormer Windows
- * Fireplace
- * Gable Front Porch by Others
- * Steps & Railing by Others

NOTE:

ELEVATIONS MAY SHOW ITEMS NOT PROVIDED BY BERACAH HOMES, PLEASE SEE CONTRACT FOR INCLUDED OPTIONS.
ALL FOUNDATIONS ARE BY THE BUILDER



BERACAH HOMES

9590 Nanticoke Business Park Drive
Greenwood, Delaware 19950
www.beracahomes.com

CUSTOMER

DATE: ??-??-????

SCALE: AS NOTED

BUILDER

DRAWN

REVISION: Michael Roup
Saxis_PD1

HOUSE
STYLE:

Ranch: 32' x 36' (Saxis)

State, County, City

SHEET:

LIT-ELEV

PROJECT:

00-0000