



FOR SALE

in St. James Plantation

REFINED COASTAL COMFORT

Fall in love with the Jonesport — a beautifully designed new construction home **coming soon** to the sought-after community of St. James Plantation. This spacious home features 4 bedrooms, 3.5 baths, a sunroom, bonus room, and a private study for ultimate flexibility. With an open layout, upgraded finishes, and Kent Homes' signature craftsmanship, the Jonesport offers comfort, elegance, and modern convenience in every detail.

Ready to see it for yourself? Call us today to schedule your virtual or in-person tour today!

\$1,049,000

4 BEDROOM

3.5 BATHROOM

3,529 SQ. FT.

**+ BONUS ROOM
& STUDY**

2789 BREFFIN COURT, SOUTHPORT, NC 28461

Scan me



KENT *homes*
A SMARTER WAY TO A LUXURY HOME

CONTACT:

CAROL AUTRY

✉ CAROL@KENTHOMES.NET

📞 910.619.0777

💻 WWW.KENTHOMES.NET

Spacious Layout

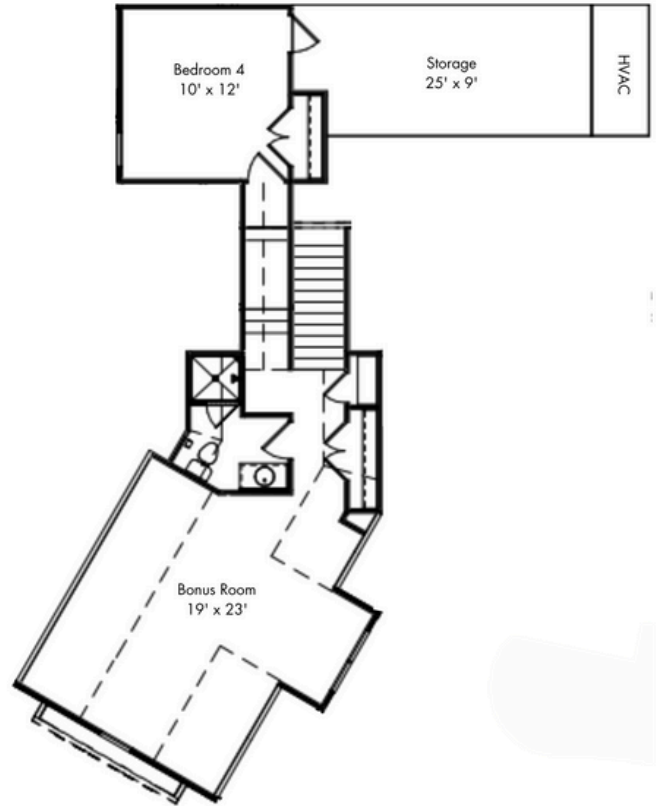
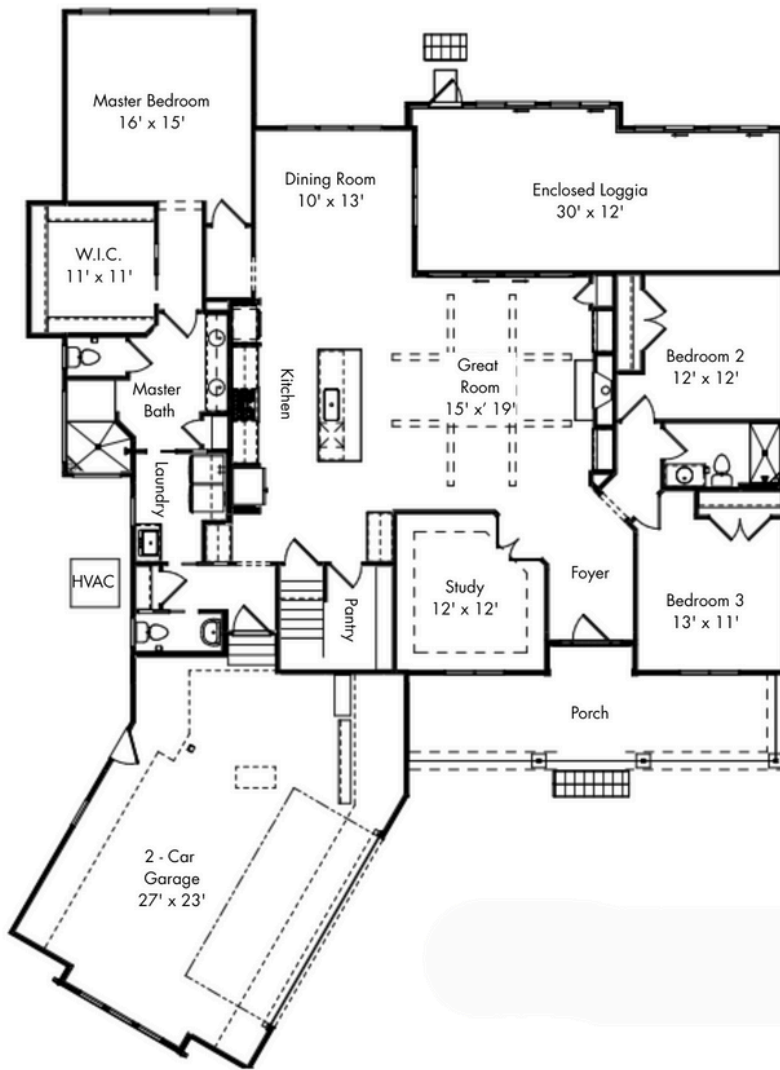
3,529 heated sq ft

740 garage sq ft

570 covered outdoor living sq ft

House Dimensions:

64' 5-3/4"(W) - 88' 1-1/2"(L)



Structural Options & Upgrades

- Extended Attic Storage (12')
- Brick & Stucco Foundation
- Extended Master Closet
- Angled Garage
- Garage Convenience Door
- Enclosed Loggia
- Gas Fireplace with Decorative Mantel
- Soft Close Doors & Drawers throughout
- LVP Flooring in Main Living Areas
- Quartz Countertops in Kitchen & Baths

Color Palette



KENT *homes*

A SMARTER WAY TO A LUXURY HOME

Pricing subject to change at anytime and without notice.

Any drawings and square footage notations are approximate and are only to be used for reference. They should not be relied upon as representations, expressed or otherwise, of the final detail of your home.