

# BRUNSWICK B3

TWO-STORY | 5 BEDROOMS | 4 BATHROOMS | 3,429 SQ FT | ELEVATION B3



2-CAR FRONT ENTRY GARAGE



3-CAR FRONT ENTRY GARAGE



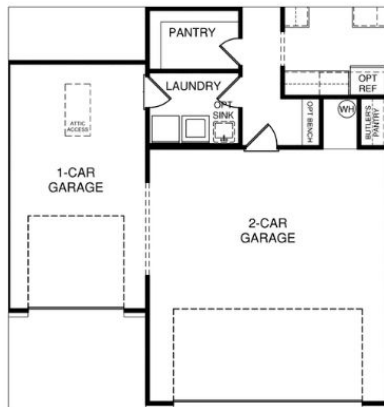
2-CAR SIDE ENTRY GARAGE



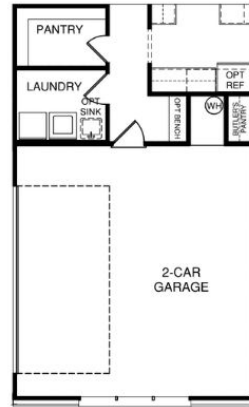
3-CAR SIDE ENTRY GARAGE



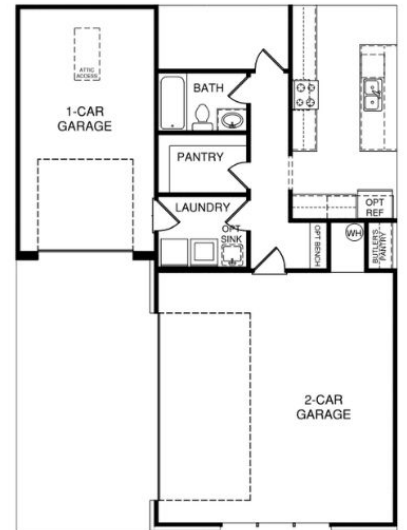
2-CAR FRONT ENTRY GARAGE



3-CAR FRONT ENTRY GARAGE



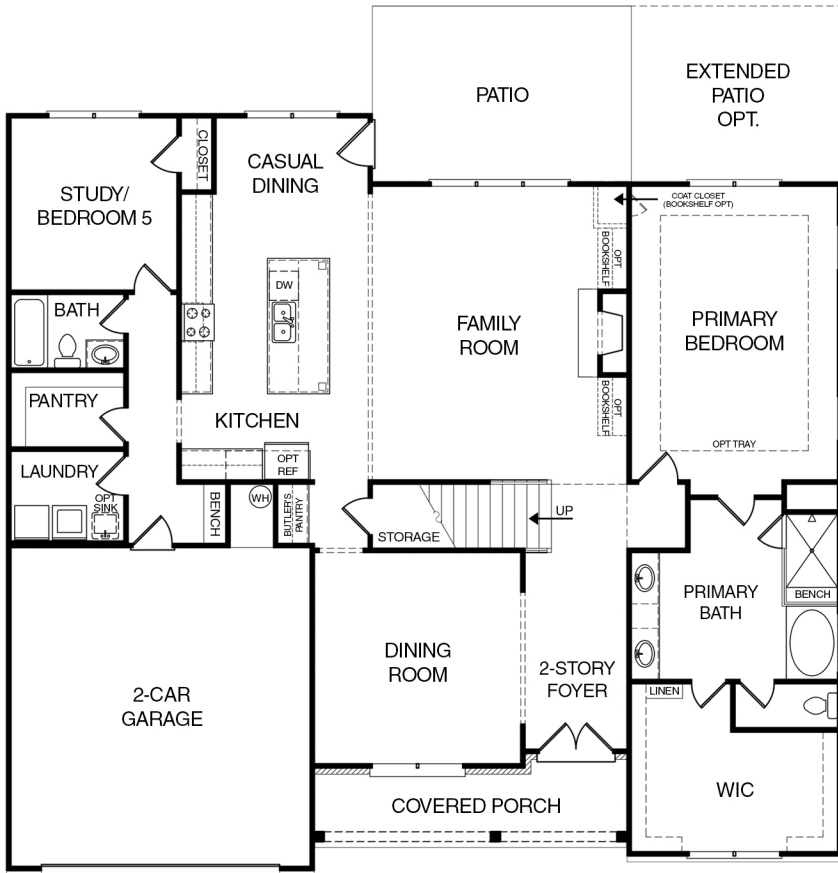
2-CAR SIDE ENTRY GARAGE



3-CAR SIDE ENTRY GARAGE

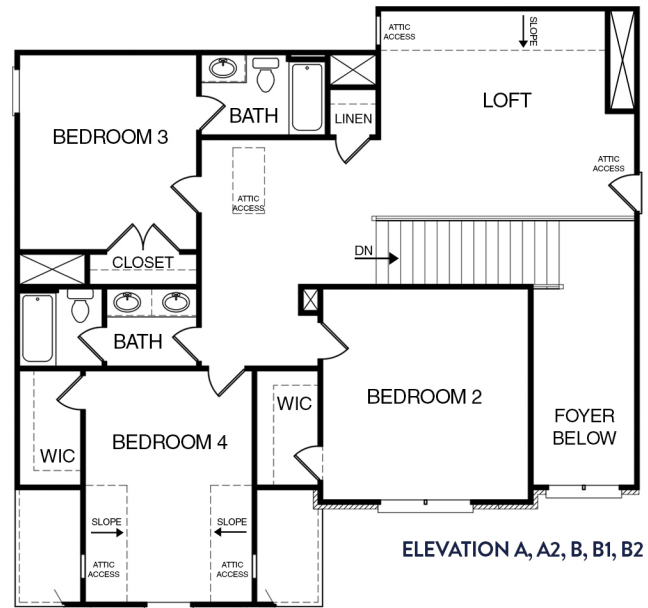
TWO-STORY | BEDROOMS | 4 BATHROOMS | 3,429 SQ FT | FLOOR PLAN

- FIRST FLOOR -



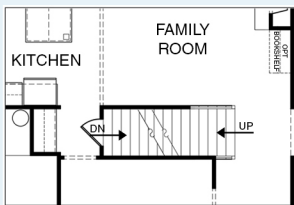
ELEVATION A, A1, B, B1, B2, B3

- SECOND FLOOR -

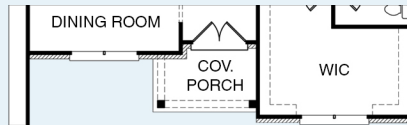


ELEVATION A, A2, B, B1, B2

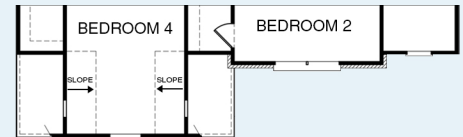
- FIRST FLOOR OPTIONS -



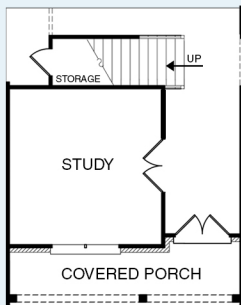
STAIRS TO BASEMENT



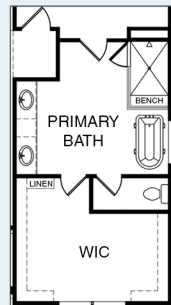
A2 PARTIAL FLOOR PLAN



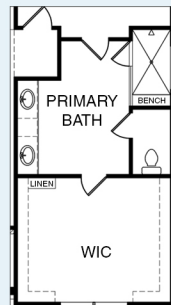
A1, B3 PARTIAL FLOOR PLAN



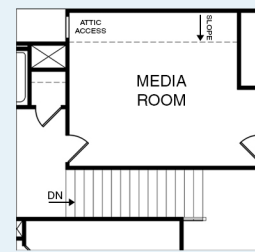
STUDY ILO DINING ROOM



FREESTANDING TUB



ENLARGED SHOWER



MEDIA ROOM ILO LOFT



BED 3 WINDOW CHANGE  
3-CAR SIDE ENTRY GARAGE