



# STONE BRIDGE HOMES NW



7.021 SQ FT  
HOMESITE

SINGLE-LEVEL  
LIVING!

214 NW 16<sup>TH</sup> AVE  
HOMESITE 7  
PLAN 355A FH

## ABOUT THE PROPERTY

## FEATURES

This splendid single-level farmhouse style home offers a beautifully designed great room with natural light filling the space, highlighting a gas fireplace with a box beam mantel, adjacent dining area opening to a 10' x 14' covered patio—perfect for entertaining or relaxing in the spacious backyard. The gourmet kitchen showcases mission shaker ginger-stained alder cabinetry with multiple upgrades, slab quartz countertops in both the kitchen and bathrooms, stainless-steel appliances including a Whirlpool 5-burner gas cooktop, wall oven, wall microwave w/ integrated trim, dishwasher, and chimney hood vent. Elegant Delta Woodhurst plumbing fixtures in a sleek black finish accent the bathrooms. The luxurious primary suite features a 5'x4' all-tile shower, garden tub, a dual-sink vanity, and a spacious walk-in closet. Front and rear landscaping with fencing and gate, a tankless water heater, central A/C, and Earth Advantage Certification for energy efficiency and sustainability.

- ✓ 3 BEDROOMS / 2 BATHS
- ✓ 2,049 SF HOME
- ✓ 2 CAR GARAGE
- ✓ SPACIOUS PRIMARY SUITE
- ✓ 10'X14' COVERED PATIO
- ✓ OWNER'S ENTRY
- ✓ CENTRAL AIR CONDITIONING
- ✓ FULLY LANDSCAPED, REAR YARD FENCED & W/GATE

# \$779,996

RMLS# 239650624



STONE BRIDGE  
HOMES NW



503.746-6215

GaryC@stonebridge-realty.com



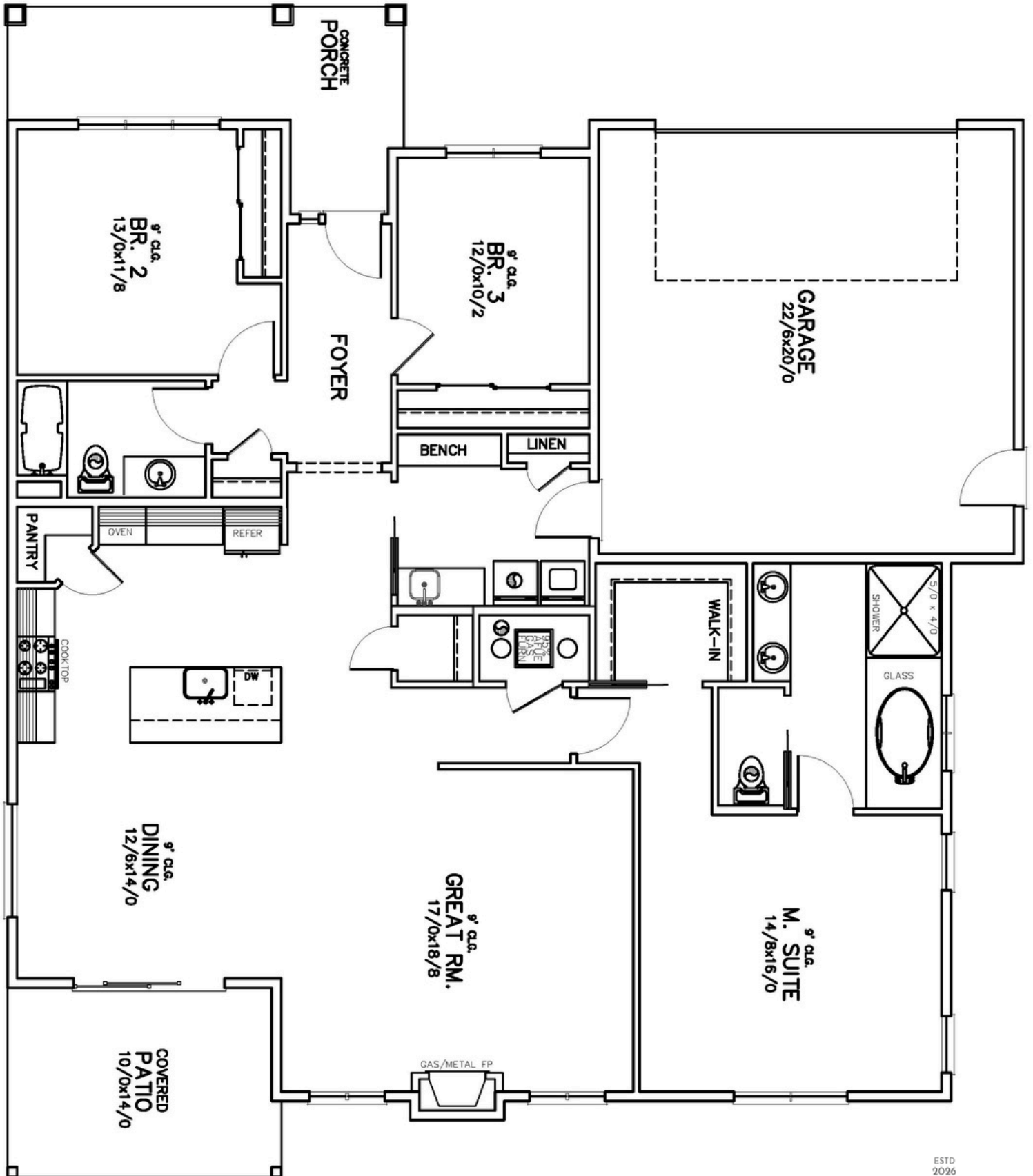
MODEL HOME:  
1608 NW 16TH AVE  
CANBY, OR, 97013

Prices, features, and incentives are subject to change. Photos and drawings are for illustrative purposes only and actual details may vary. Please see a sales representative and the sale agreement for additional information. CCB#173318



# HOMESITE 7

214 NW 16<sup>TH</sup> AVE  
CANBY, OR 97013



ESTD  
2026

DAHLIA  GLEN

Canby, OR