



*welcome home*

**BISHARD HOMES**

2245 WAKE FOREST STREET

---



**BISHARD  
HOMES**

# WHY BISHARD HOMES?

*More than 20 years after Bishard Development Corporation was introduced, we continue the tradition that the Bishard brothers began.*

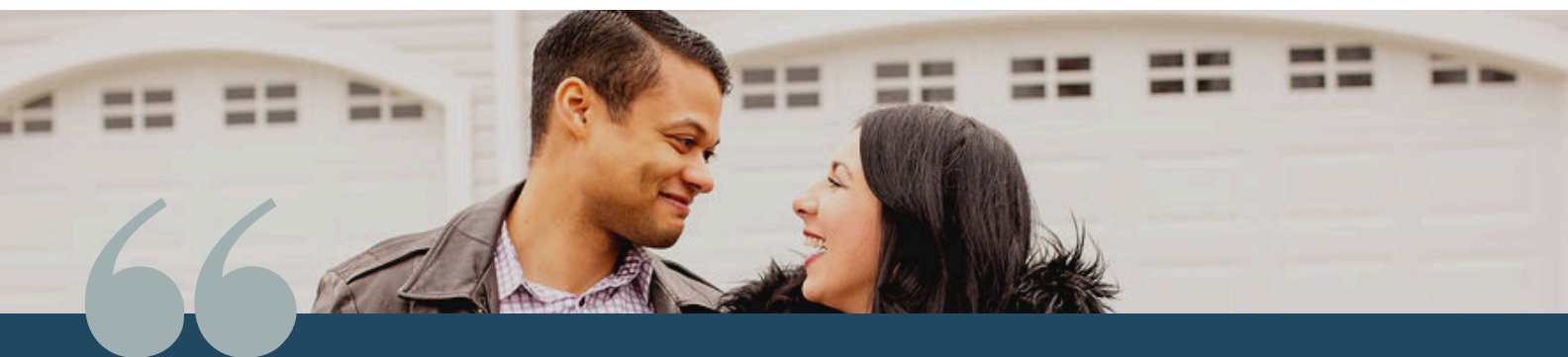
Over the years, the area has changed. Design, materials, and technology have evolved, enabling us to build

homes that “perform”—with smart technology, energy efficiency, and design innovations that increase comfort and convenience.

Still, the desire for the serenity that can only be experienced at the shore remains the same—along with the integrity of the people who make Bishard Homes a success. From your first inquiry through finalizing your choices and following the path to ownership, we will smoothly navigate you through every step.

We listen. We offer ideas. We use our experience to bring your dream to life.

*Bishard Homes is not our business. It's our pleasure.*



*Bishard Homes and Bishard Builders have an outstanding reputation for building quality affordable housing and standing firmly behind the quality construction they construct!*

*-MICK, VIRGINIA BEACH*

# The Newcastle

## 2245 WAKE FOREST ST

The Newcastle on Wake Forest St. offers 3,200 square feet of exquisite living space that epitomizes luxury and elegance. Located in Cape Story by the Sea, this home is only a five minute walk to the bay. Designed with intention and attention to detail, this property boasts five generously sized bedrooms including two owner's suites - with one located on the first floor. The heart of this home is the open concept living and kitchen area, designed for practical living and entertaining. The vaulted living area, overlooked by the kitchen, is anchored by a stunning gas fireplace and tons of natural light. On the second floor, the second owner's suite serves as a private retreat with access to its private deck, offering seclusion and luxury. It boasts a spacious walk-in closet, providing abundant storage for wardrobe and accessories. The en-suite bathroom features a free-standing tub, an oversized shower with frameless glass door, and dual vanities. An additional ensuite, two more bedrooms, a full bath and the laundry room complete the second floor.



  
**BISHARD HOMES**

# The Newcastle

2245 WAKE FOREST ST

3,091 SQFT | 5 Beds | 4.5 Baths

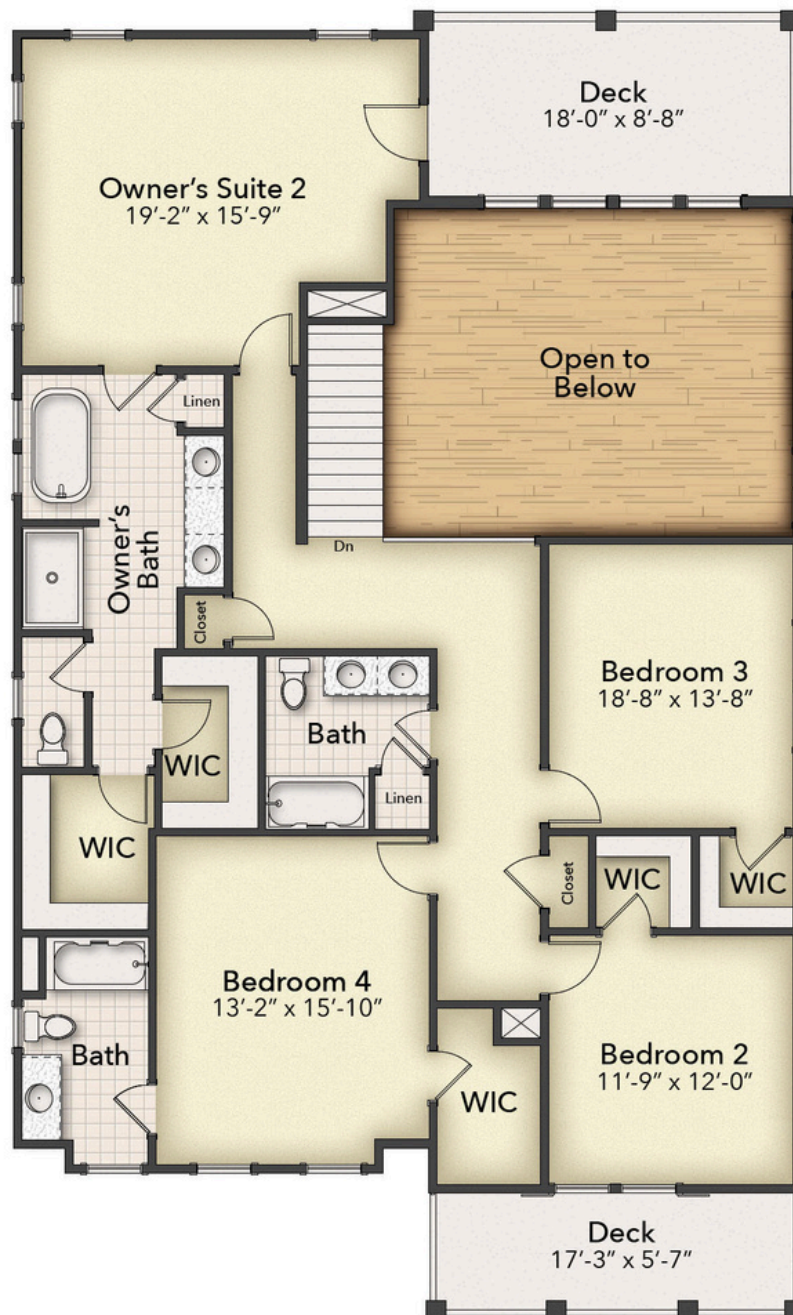


*\*all pricing, products, and availability are subject to change without notice.*

# The Newcastle

2245 WAKE FOREST ST

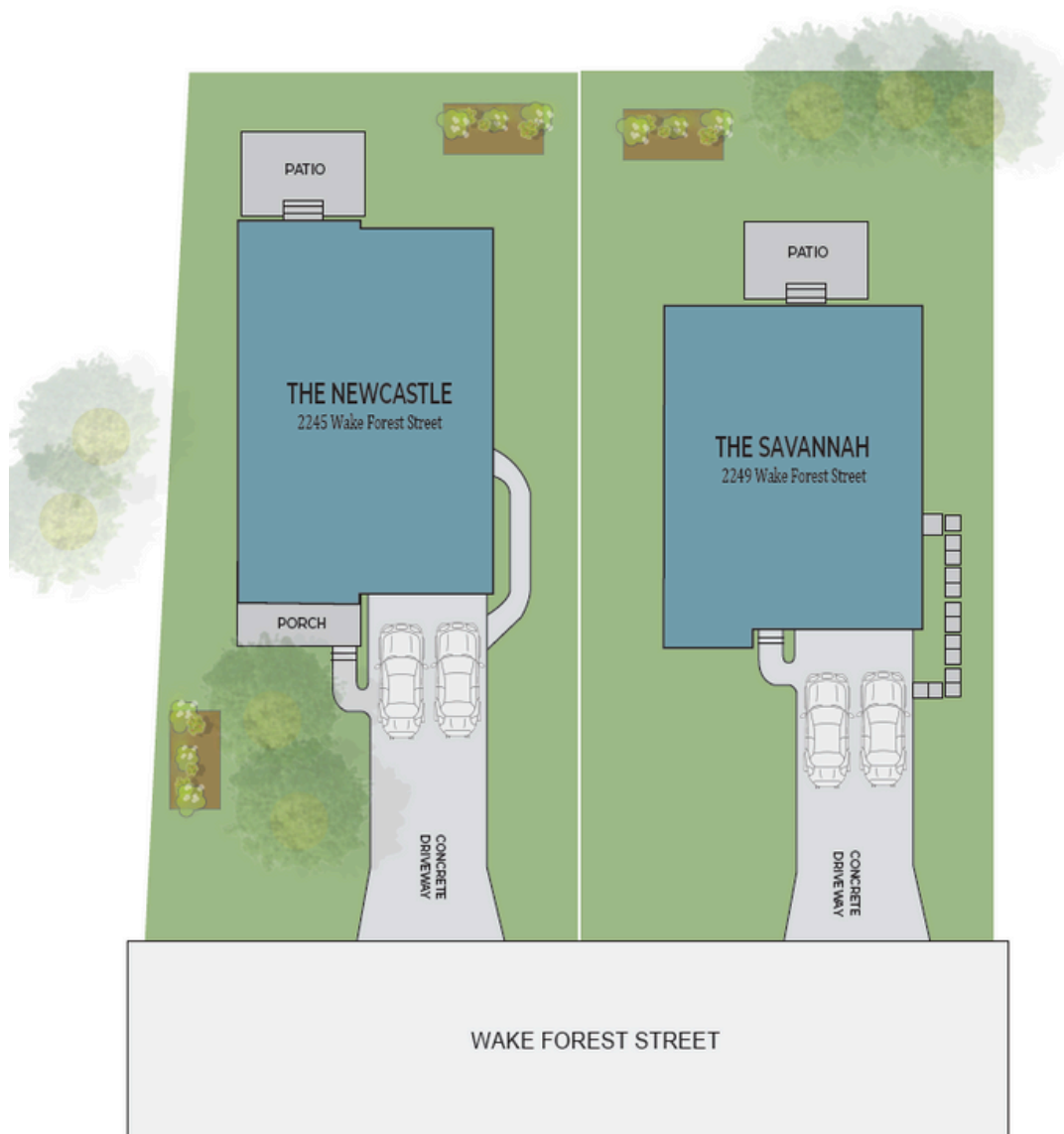
## SECOND FLOOR



*\*all pricing, products, and availability are subject to change without notice.*

# Wake Forest St

## SITE MAP



  
**BISHARD HOMES**

*\*Site plan is an artistic rendering, subject to artistic liberties.*

# Wake Forest St

## STANDARD FEATURES

### ELEGANT INTERIOR FEATURES

- Interior Floor Plans Designed to Maximize Natural Light
- High Ceilings in Living Area (9' Per Plan)
- Deluxe 42" (Upper) Cabinets w/ Wood Hood over Range
- Under Cabinet Lighting & Maintenance Free Backsplash
- Soft close Dovetail Drawers and Doors
- Quartz Kitchen Countertops
- Delta Designer Kitchen Faucet & Modern Kitchen Sink
- Stainless-Steel Appliances & Custom Pendant Lighting
- Slide-in Gas Range with Microwave in Below Cabinets
- Shiplap around the Kitchen Island
- Shaw Hardwood in the Living Area
- Shaw Stain Resistant Carpet in all Bedrooms & Halls
- Hardwood Oak Staircase
- Ceiling Fans in the Master and Living Room
- Abundant LED Recessed Lighting (Per Plan)
- Smooth Drywall Finish
- Sherwin Williams 3-Toned Interior Paint
- Gas Fireplace with Tile Surround
- Cat6 Outlets in All Bedrooms and Living Room
- Smurf Tubing in Living Room for Entertainment Equipment
- Smart Closet for Whole Home Wi-Fi Connectivity

### DISTINCTIVE EXTERIORS

- Beautiful Appointed Exterior Features
- Vinyl Windows Low E Glass with grids
- 30 Year Architectural Shingles
- James Hardie Color Plus Lap Siding
- Fiberglass Entry Door
- Brick accents/ skirt on the Front Elevation (Per Plan)
- Carriage Garage Door with Glass Windows
- Designer Brand Lighting Fixture Package
- Hose Bibs – Front and Rear
- GFI Protected Outlets – Front and Rear
- Concrete Walkways w/ Paver Rows
- Landscape Design Including Shrubs & Sod (Per Plan)
- Concrete Patio with Paver Border and X Pattern
- Standing Seam Metal Roofs (Per Plan)
- Trex Deck Boards
- Exterior Shower with Concrete Pad
- Gas Stub-out for Grill

### APPOINTED OWNER'S BATH

- Ceramic Tile Floors
- All Tile Shower with Niche
- Double Shower Heads
- Quartz Vanity Countertops
- Quality Delta Fixtures and Matching Bath Hardware
- Elongated Toilet
- Frameless Shower Door w/ Brushed Nickle Accents

# Wake Forest St

## STANDARD FEATURES

### SECONDARY BATHS

- Pedestal Sink w/ Oval Mirror in Powder Room
- Quartz Vanity Countertops
- Ceramic Tile Flooring
- Low Maintenance Fiberglass Tub Insert w/ Tile Walls
- Quality Delta Fixtures with Matching Bath Hardware
- Elongated Toilets

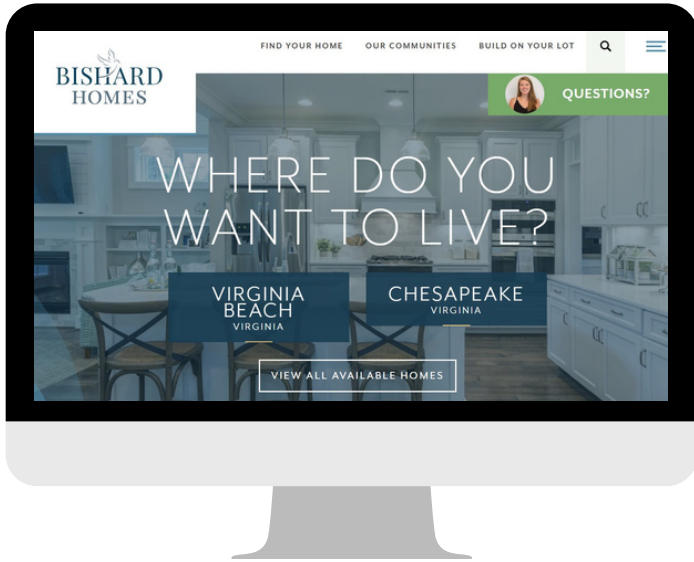
### WARRANTY

- 1 Year Material & Workmanship
- 5 Year Structural Warranty

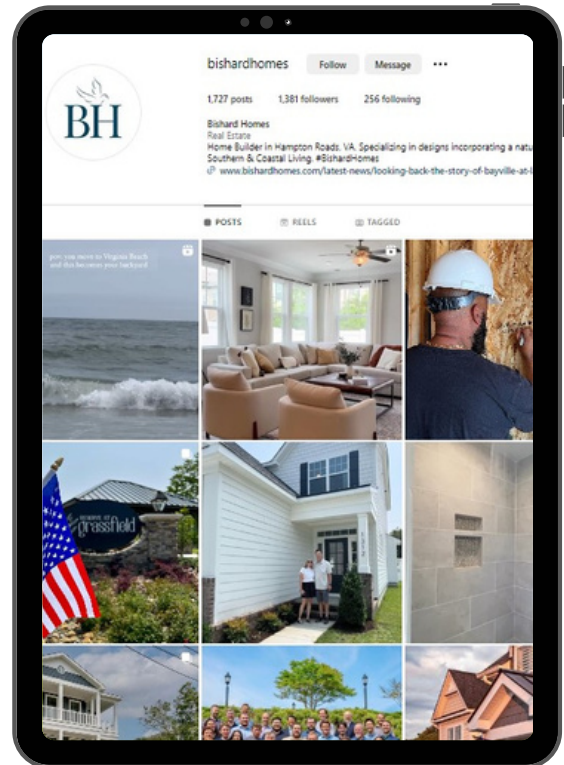
### ENERGY EFFICIENT FEATURES

- LED Energy Efficient Bulbs Throughout Home
- Energy Star Appliances
- Energy Efficient Gas Furnace w/ 15 SEER A/C
- Programable Thermostat w/ Smart Phone Connectivity
- R-49 Attic Insulation, R-15 Exterior Wall Insulation
- Insulated Concrete Slab Foundation
- Spray Foam Insulation on All Penetrations
- TYPAR House Wrap System
- Energy Efficient Tankless Water Heater

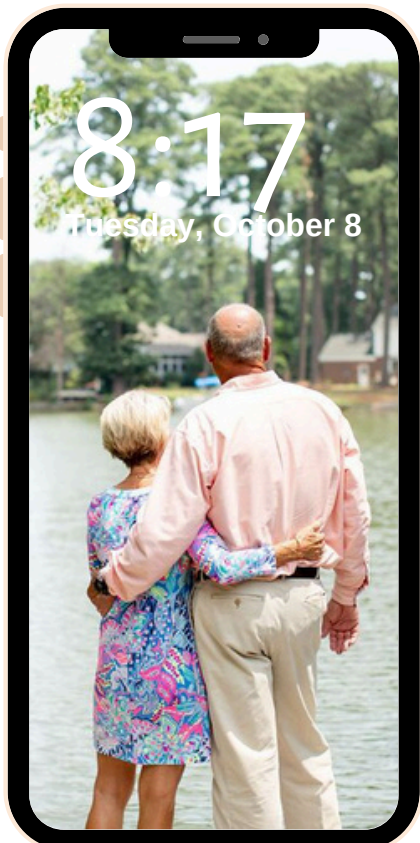
# QUESTIONS?



FOLLOW ALONG ON  
SOCIAL MEDIA  
@BISHARDHOMES



FIND US ONLINE AT  
[WWW.BISHARDHOMES.COM](http://WWW.BISHARDHOMES.COM)



CALL OUR  
NEW HOME SPECIALISTS  
(757) 703-3367