



Craftsman Elevation

## THE CHELSEA

### Features:

- 3-4 bedrooms
- 2-3 full baths
- 2-car garage
- Full basement
- 9-foot first-floor ceilings
- First-floor owner's bedroom suite



Classical Elevation

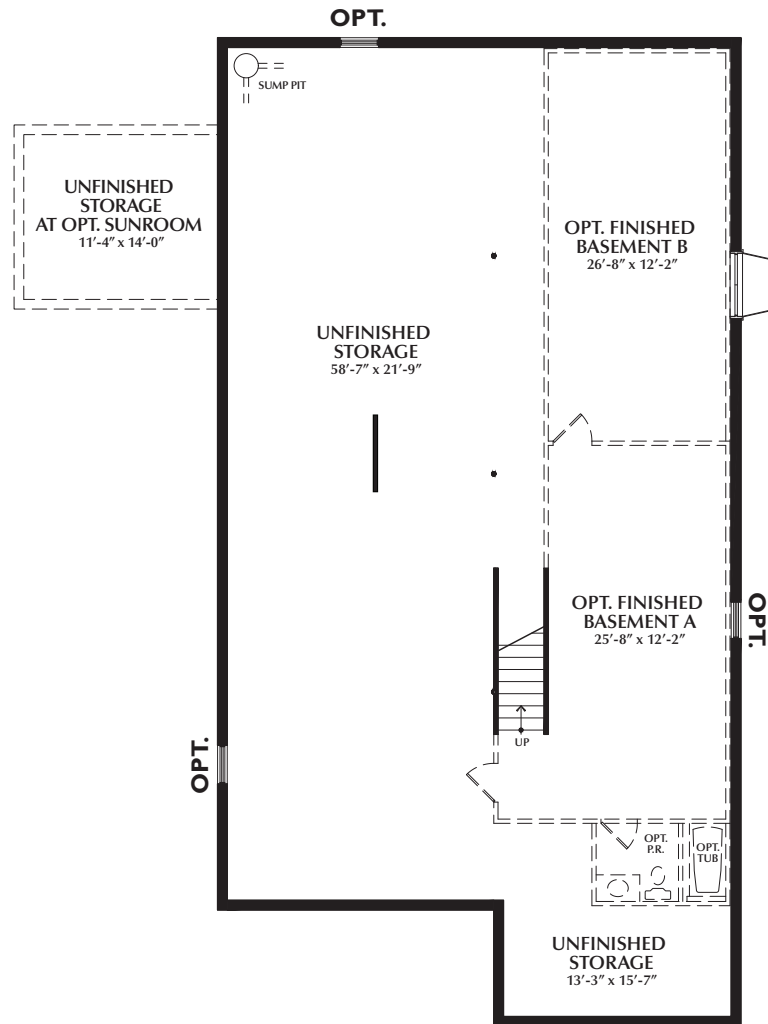


Federal Elevation





## Basement Plan



### Optional Walk Out Plan



REV. 1-9-24

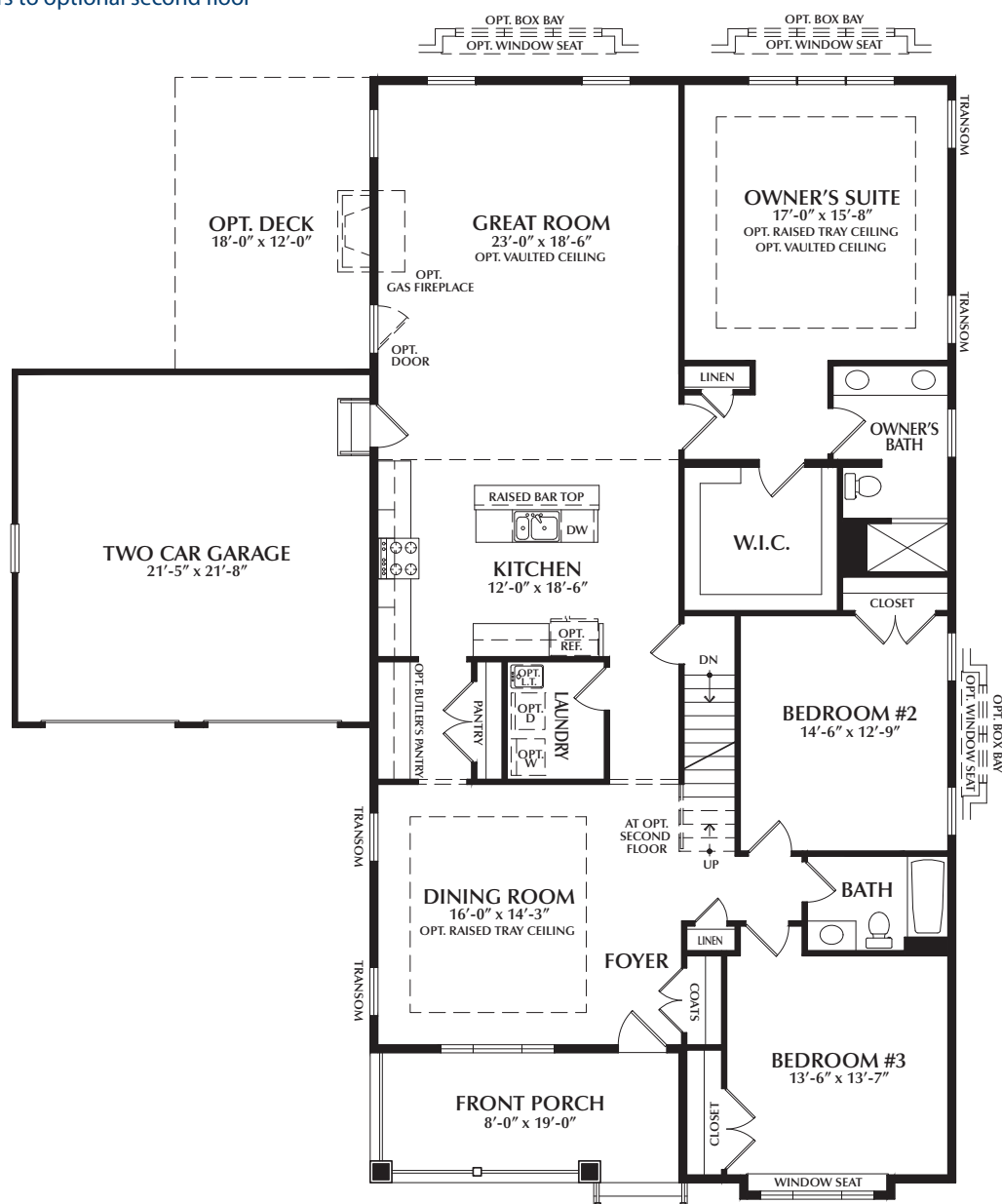
Details and dimensions shown on these floor plans are approximate and subject to change. Illustrations are artists concepts and may vary in detail from the actual plans and specifications. The right is reserved to make changes without notice or obligation. Floor plans in brochure represent Craftsman elevation. Classical and Federal elevations have walls, windows, and room sizes that vary slightly. Please consult the community sales manager for alternate floor plans, options, and features.



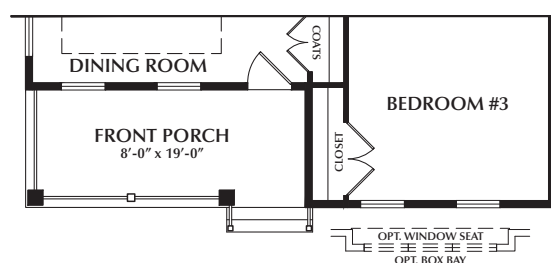
## First Floor Plan

Shown on Craftsman Elevation

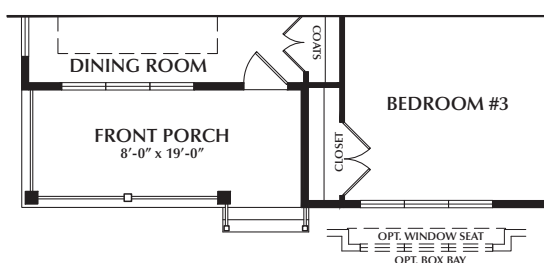
Shown with stairs to optional second floor



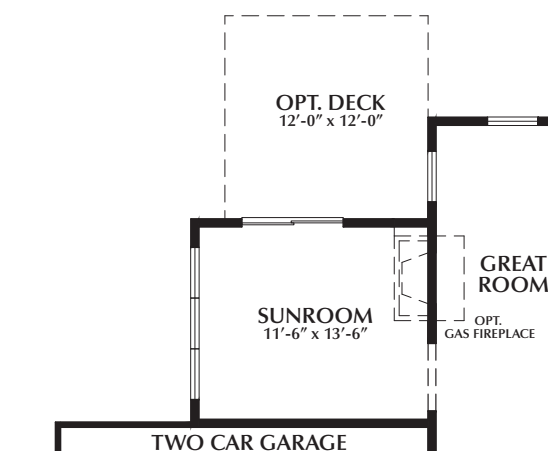
## Federal Elevation Porch



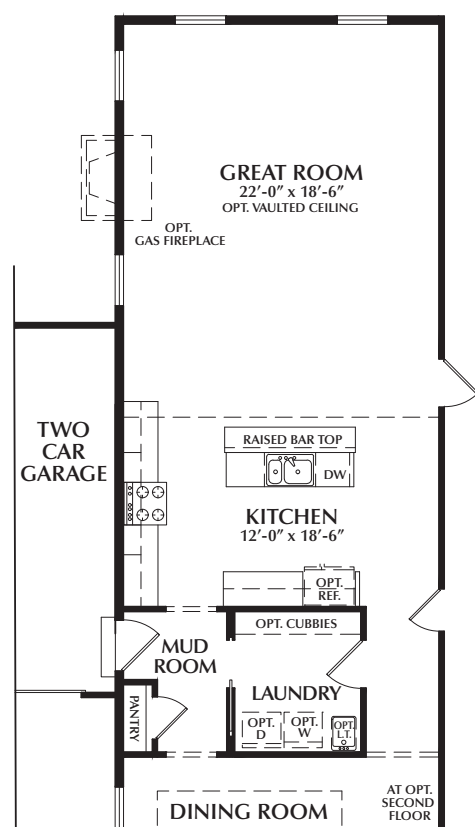
### Classical Elevation Porch



### Optional Sunroom

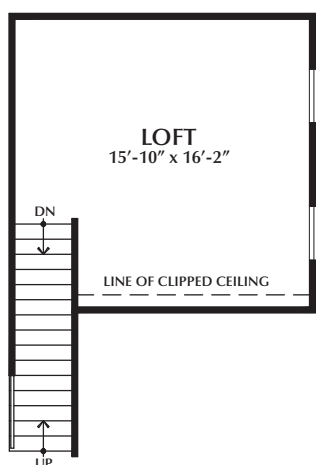


## Optional Mudroom

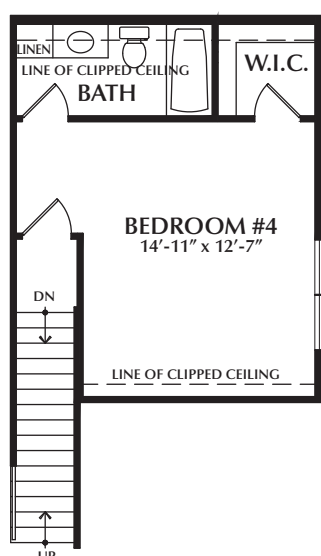


## Optional Second Floor Plan

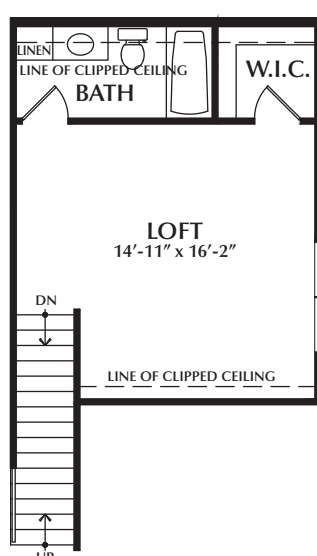
### Optional Loft



### Optional 4th Bedroom with Bath



### Optional Loft with Optional



### Optional 4th Bedroom with Bath and Loft

