

Ready Home for Sale






Driveway & Landscaping not included.
Not actual home, but similar plan.

\$529,900*

July Occupancy

Maple Park (Lot 72)
1007 Ellis Avenue
Caledonia, WI 53402

-  4 Bedrooms
-  3 Bathrooms
-  2,327 SF
-  2 Car Garage

Directions:

I-94 exit 7 Mile Rd. East to Hwy 32. South to Johnson Ave. Left directly into the neighborhood. Continue through the roundabout. Right on La Salle Street. Right on Ellis Ave to home on the left.

*Price subject to change without notice.



KITCHEN FEATURES

- Marsh stained cabinets w/ soft close doors & drawers, crown molding, and 42" upper cabinets
- Pantry
- Quartz countertops w/ counter splash, island w/stained cabinets & snack bar
- Stainless Steel GE® dishwasher and over the range microwave

MAIN LEVEL FEATURES

- 9' ceiling height first floor
- Luxury vinyl plank flooring in kitchen, great room, foyer, mudroom, bathroom & hallways
- Heatilator® gas fireplace w/ tile surround & stained box mantel w/side returns
- Flex room w/ large closet
- Built-in boot bench in mudroom
- Hall closet
- Full bath on main floor

PRIMARY SUITE FEATURES

- Two large walk-in closets
- 60" x 34" shower with glass door
- Double bowl sink
- Secluded commode w/ comfort height toilet

ADDITIONAL FEATURES

- Alliance® windows and patio door
- Fiberglass entry door w/ ¾ lite
- Certainteed® roof shingles w/ synthetic layment & ice/water shield
- Knockdown drywall finish
- Basement bathroom plumbing rough in
- Homework loft
- Linen closet on second floor
- Second floor laundry room
- 2x6 Construction
- Focus on Energy Certified
- Moen® Faucets & Kohler® Toilets
- Maxim® Light Fixtures
- Ceiling fans in great room and primary bedroom
- Painted trim and door package
- Builder Warranty Included
- Extra storage at back of garage

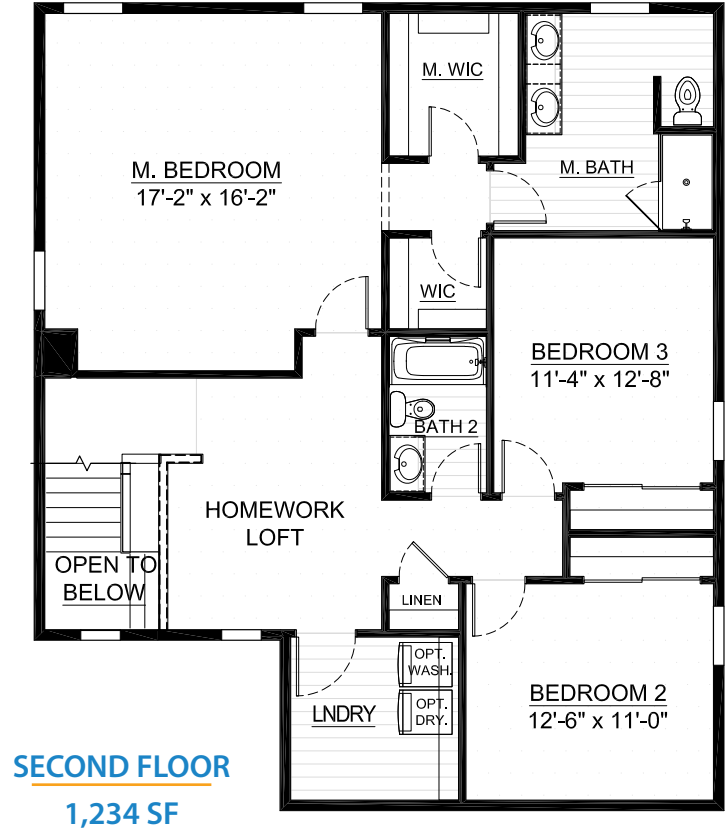
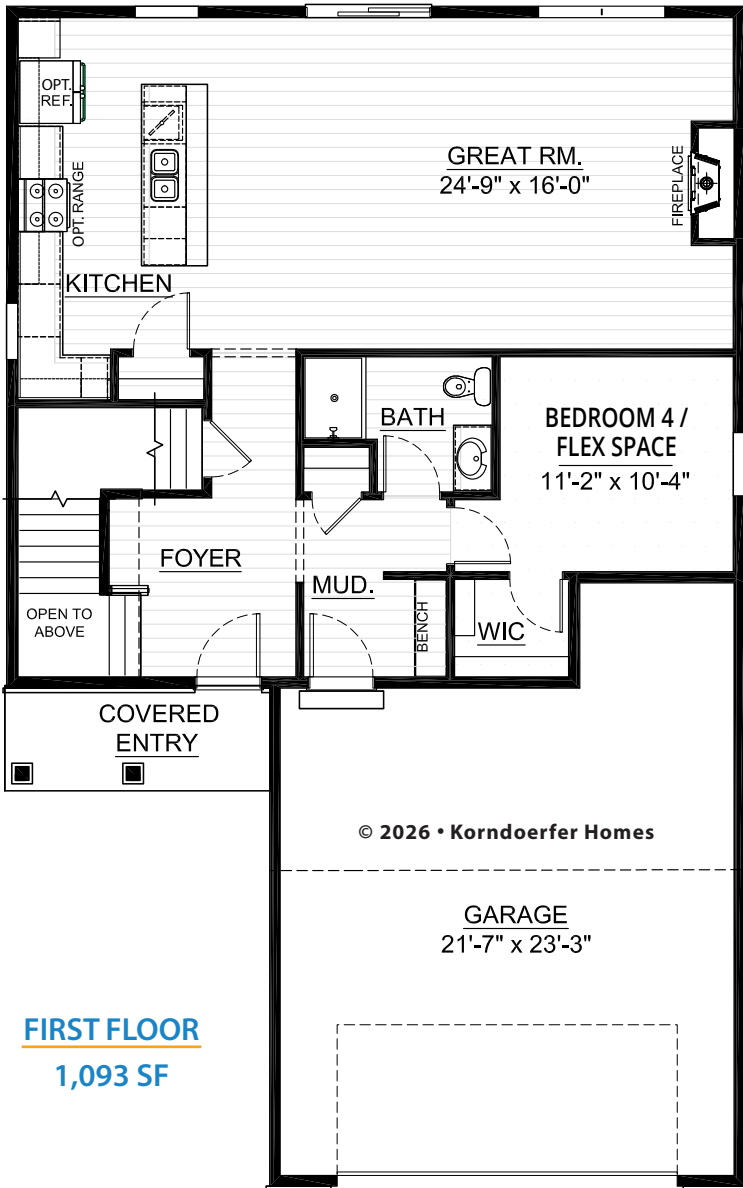
Floor Plan on Other Side →



ASK RYAN!

Online Sales Consultant
262-884-9551
sales@korndoerferhomes.com





ASK RYAN!

Online Sales Consultant
262-884-9551
sales@korndorferhomes.com

