



3172 MARGARET RUDDER PARKWAY



RUDDER POINTE NEIGHBORHOOD

3 BDRM | 2 BATH | 1725 SF

Discover the charm of the newly redesigned Rose Plan by Avonley Homes—where comfort meets thoughtful design. The heart of the home is a spacious U-shaped kitchen that seamlessly flows into the open-concept living and dining areas, perfect for both everyday living and entertaining. With 3 bedrooms and 2 bathrooms, this light-filled home is crafted with your family's lifestyle in mind. The primary suite features a serene bath retreat with a separate garden tub and shower, offering the perfect blend of relaxation and functionality.

**FEATURES:**

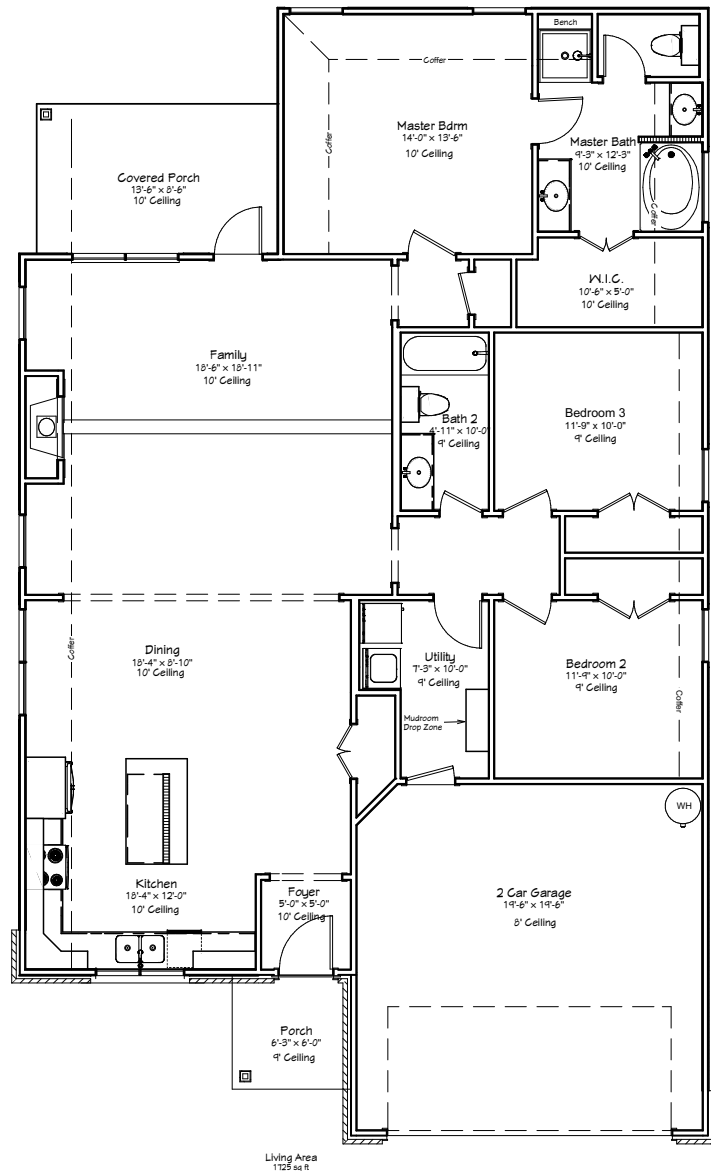
Covered Back Porch | Quartz & Granite Countertops | Mudroom Built-In  
Wood Burning Fireplace | Luxury Vinyl Plank Flooring | Stainless Appliances

COME HOME TO AVONLEY



**Avonley Homes**  
 979-321-7200  
 info@avonleyhomes.com

## 3172 MARGARET RUDDER PARKWAY



3 BDRM | 2 BATH | 1725 SF

[WWW.AVONLEYHOMES.COM](http://WWW.AVONLEYHOMES.COM)

**COME HOME TO AVONLEY | Avonley Homes is committed to giving families the home of their dreams. From simple comfort to expert craftsmanship, we promise you will be proud to call our house your home.**