

PALMETTO FARMHOUSE

MANUEL



BUILDERS

4 BEDROOM | 2 1/2 BATH

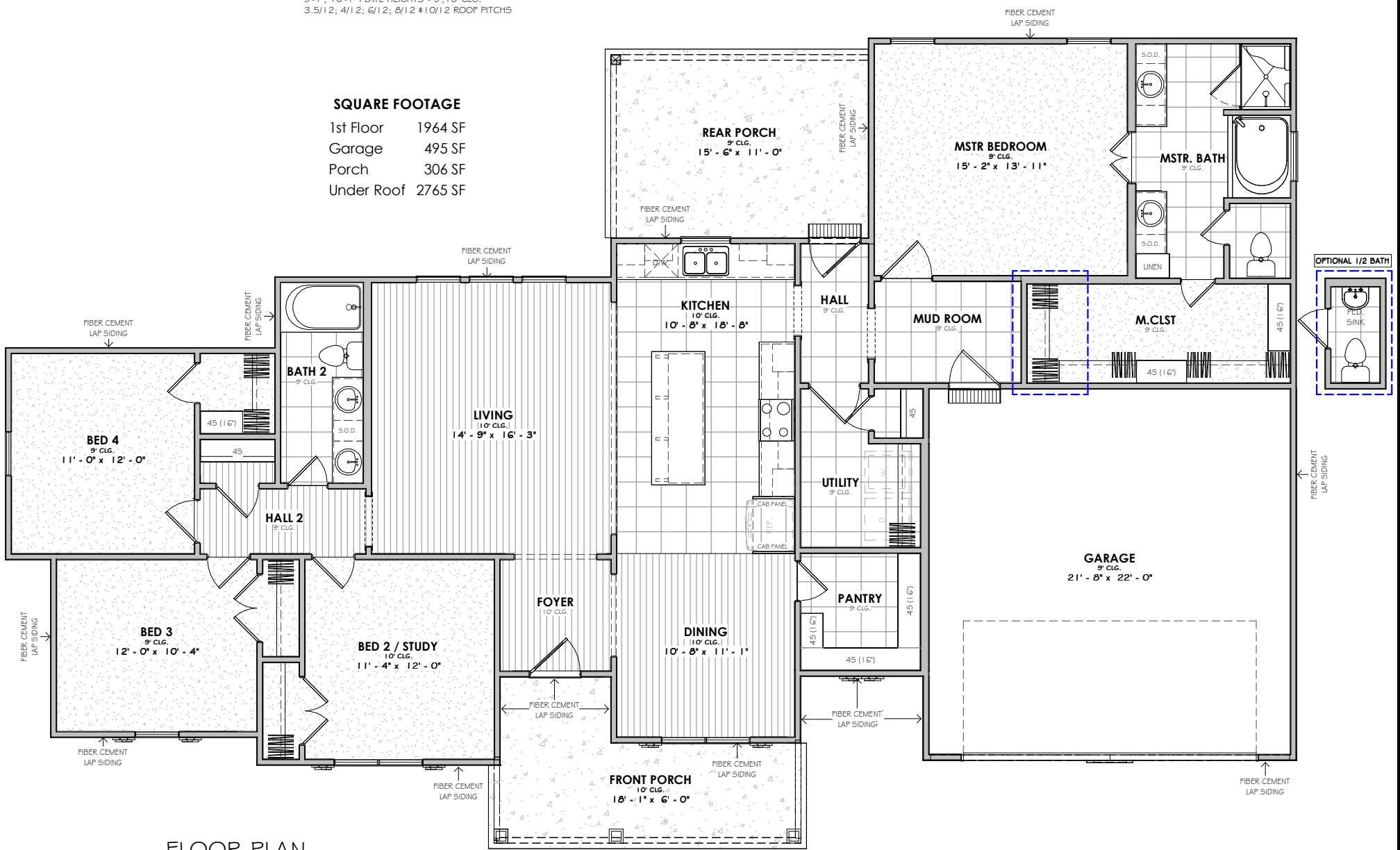


FRONT ELEVATION

9'-1"; 10'-1" PLATE HEIGHTS - 9', 10' CLG.
3.5/12; 4/12; 6/12; 8/12 #10/12 ROOF PITCHES

SQUARE FOOTAGE

1st Floor	1964 SF
Garage	495 SF
Porch	306 SF
Under Roof	2765 SF



FLOOR PLAN

OVERALL DIMENSIONS
77' - 6" WIDTH X 48' - 8 1/2" DEPTH

