



THE ADDISON

2,314 SQ. FT.
4 BED | 2.5 BATH



HARBOR HOMES

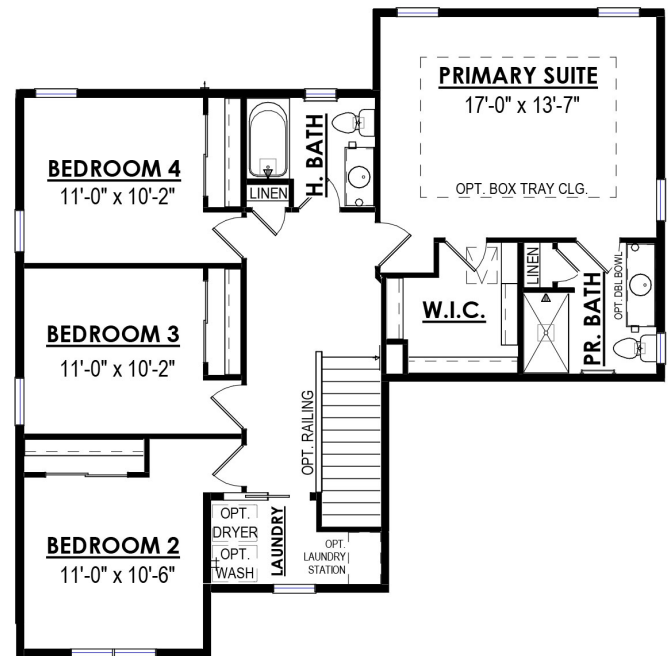


THE ADDISON

2,314 SQ. FT.
4 BED | 2.5 BATH

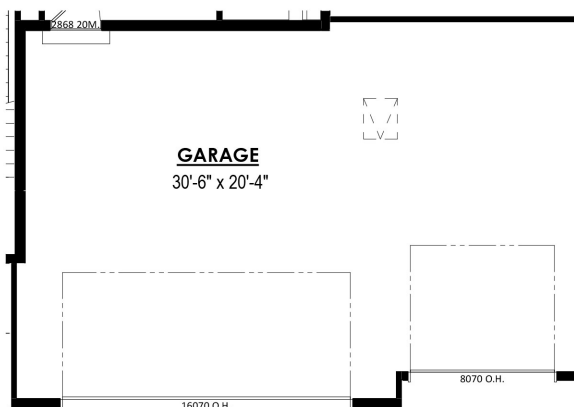


1st FLOOR
1,157 Sq. Ft.

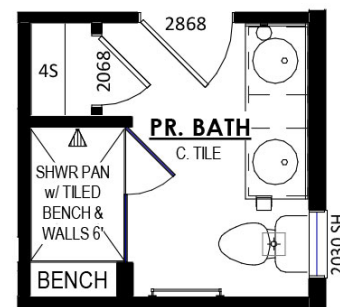


2nd FLOOR
1,157 Sq. Ft.

Predesigned Options:



3-Car Garage



Luxury Primary Bath



Renderings may be shown with optional features such as stone and other details. Products shown as life-like as possible. We cannot guarantee the color seen portrays the true color of the product. Copyright 2023 Harbor Homes Inc. Updated 01/24/2025

262.232.8520 | HarborHomesWI.com

