



*welcome home*

**BISHARD HOMES**

4633 B CORONET

---

  
**BISHARD  
HOMES**

# WHY BISHARD HOMES?

*More than 20 years after Bishard Development Corporation was introduced, we continue the tradition that the Bishard brothers began.*

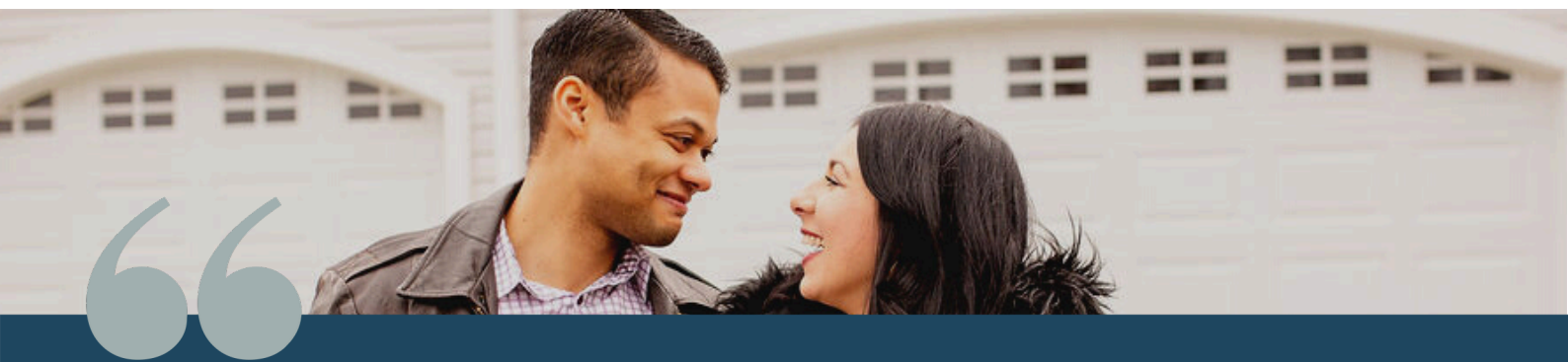
Over the years, the area has changed. Design, materials, and technology have evolved, enabling us to build

homes that “perform”—with smart technology, energy efficiency, and design innovations that increase comfort and convenience.

Still, the desire for the serenity that can only be experienced at the shore remains the same—along with the integrity of the people who make Bishard Homes a success. From your first inquiry through finalizing your choices and following the path to ownership, we will smoothly navigate you through every step.

We listen. We offer ideas. We use our experience to bring your dream to life.

*Bishard Homes is not our business. It's our pleasure.*



*Bishard Homes and Bishard Builders have an outstanding reputation for building quality affordable housing and standing firmly behind the quality construction they construct!*

*-MICK, VIRGINIA BEACH*

# The Parker

---

## 4633 B CORONET

Welcome to the Parker, a modern 3-level duplex tucked just minutes from the Chesapeake Bay, First Landing State Park, and the local restaurants along Shore Drive. This Parker floorplan is designed to feel open and inviting, with a first-floor bedroom and full bath that works perfectly for guests, a quiet office, or simply a bit of extra privacy. The second floor opens up into a bright, easy-flowing living, dining, and kitchen space with a balcony that brings in natural light and a touch of the outdoors. Upstairs, the third floor offers two private bedroom suites, including a spacious owner's retreat with a walk-in closet and a double vanity bath. The layout creates a natural sense of separation and comfort, while the location keeps you close to the water, the trails, and everything that makes this part of Virginia Beach feel connected.

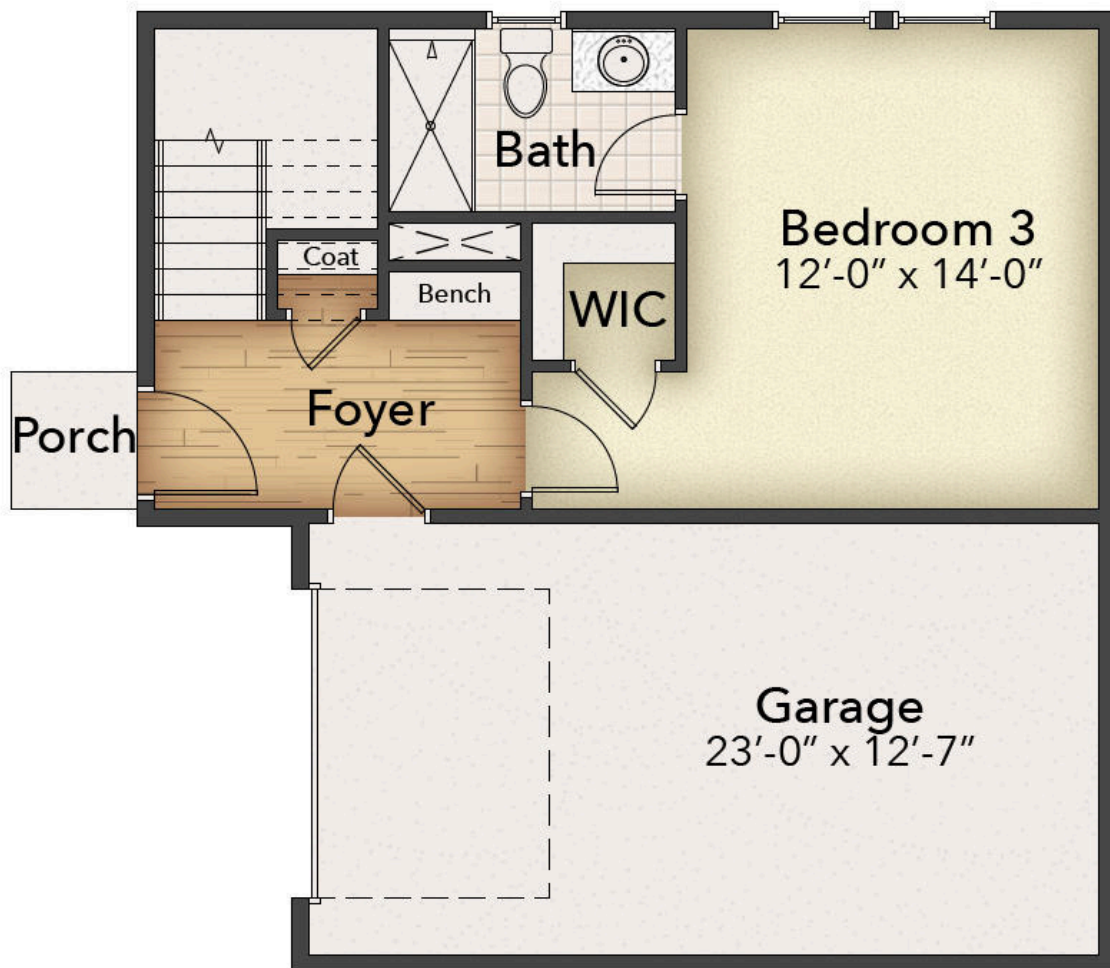


  
**BISHARD HOMES**

# The Parker

## 4633 B CORONET

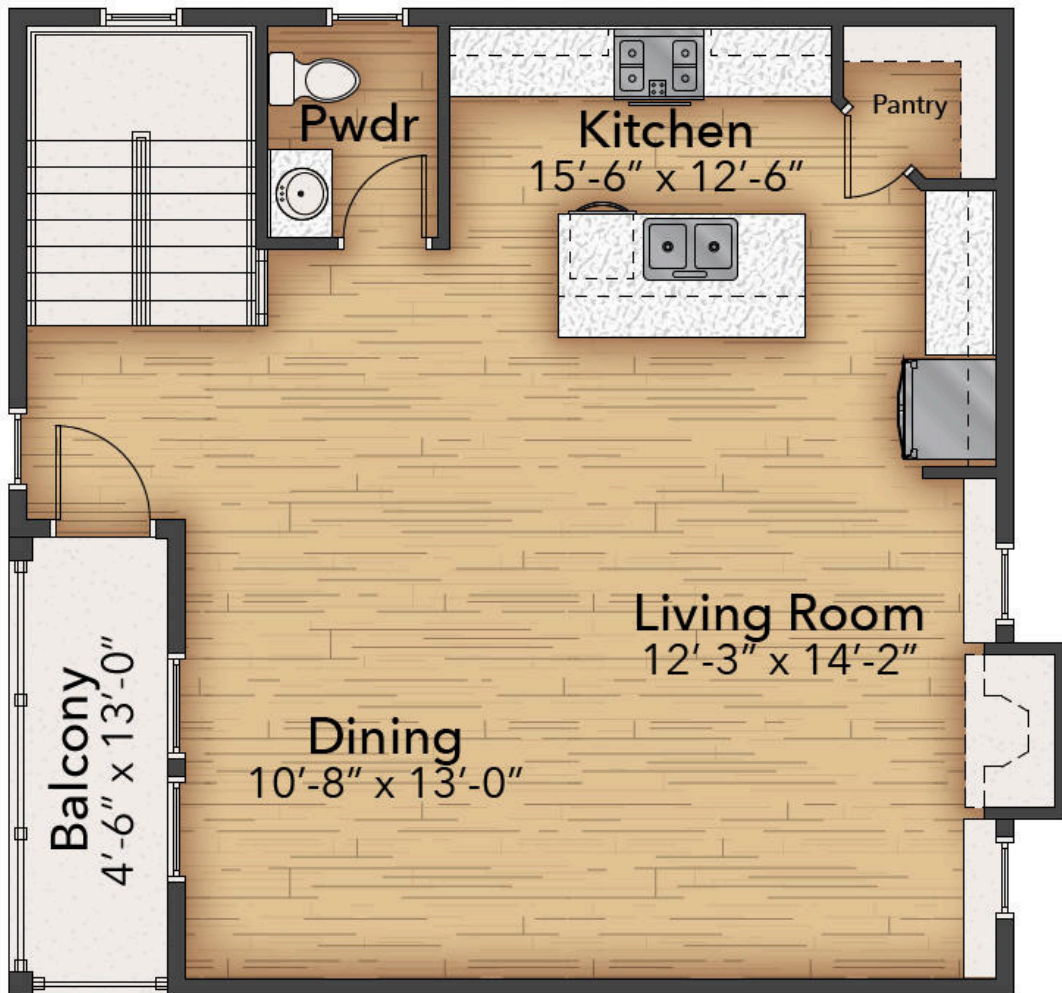
FIRST FLOOR  
3 BED | 3.5 BATH | 1,715 SQFT



# The Parker

## 4633 B CORONET

SECOND FLOOR  
3 BED | 3.5 BATH | 1,715 SQFT



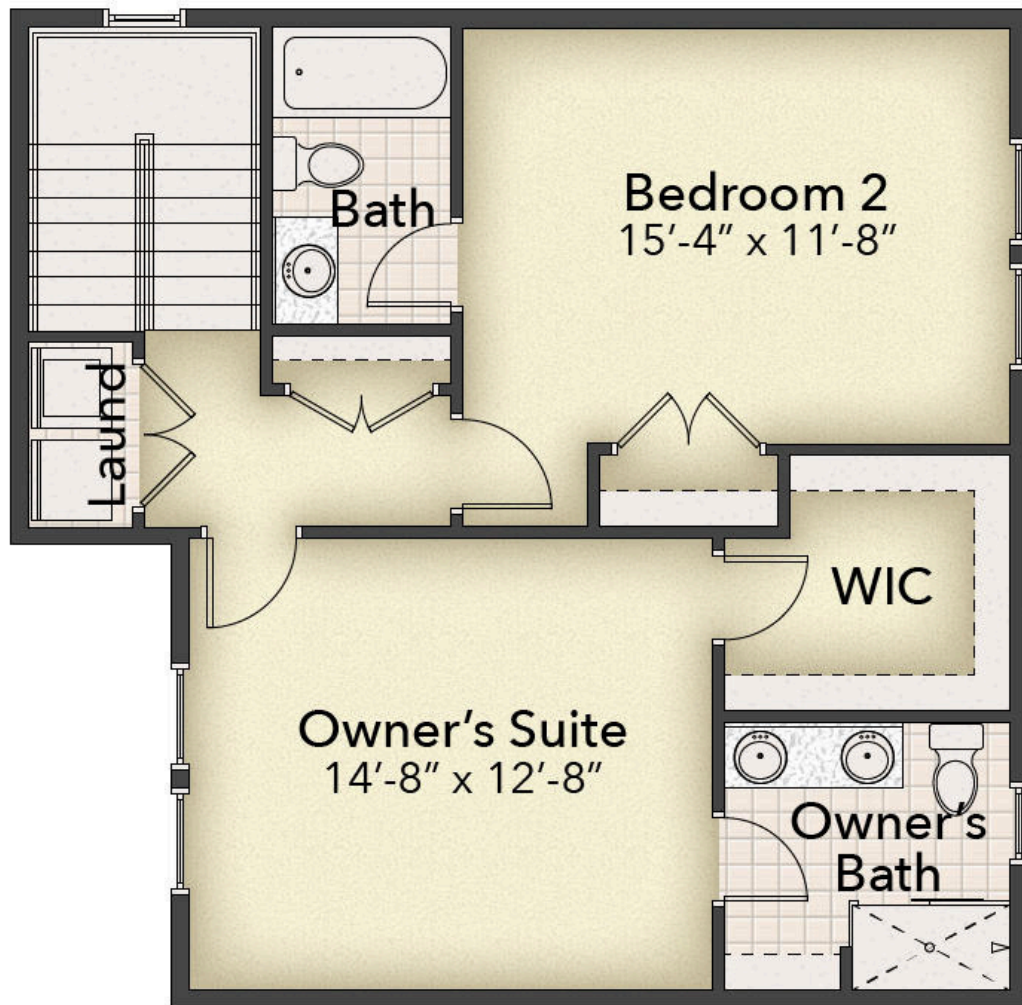
---

# The Parker

---

4633 B CORONET

THIRD FLOOR  
3 BED | 3.5 BATH | 1,715 SQFT



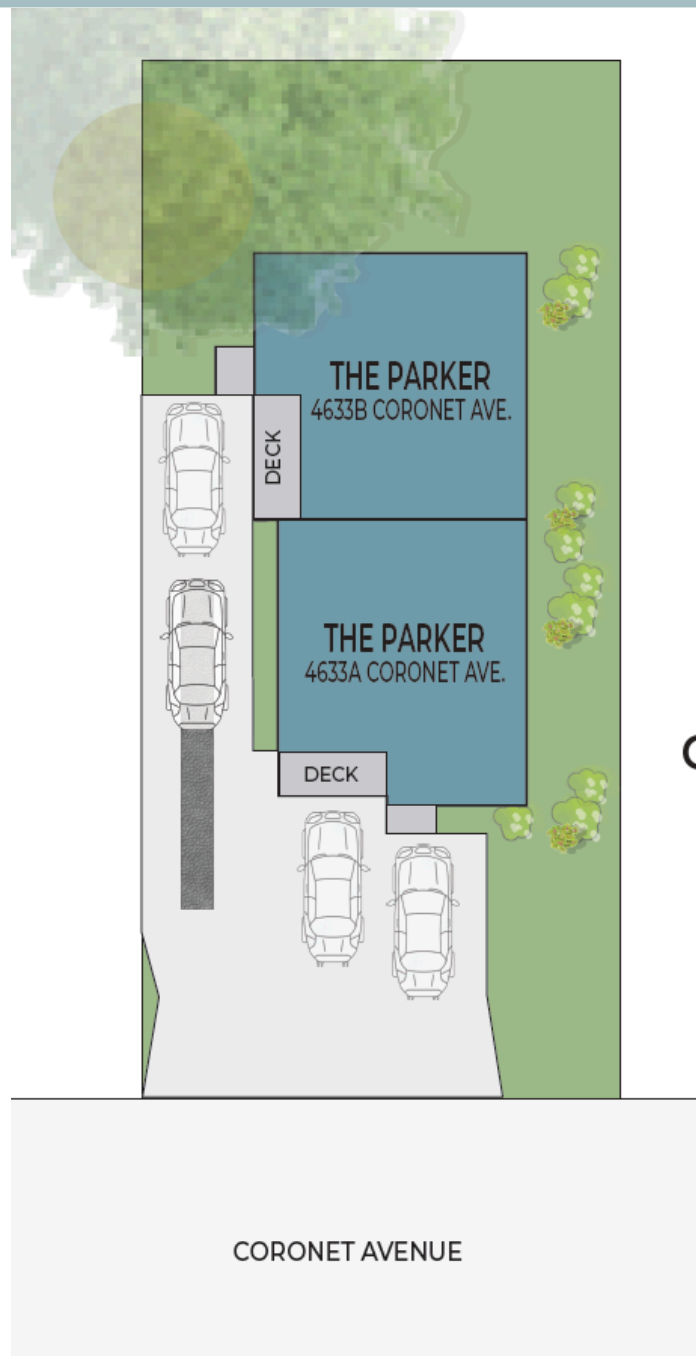
  
BISHARD HOMES

---

Renderings, floor plans, dimensions, features, and pricing are for illustrative purposes only and are subject to change without notice.

# 4633 B Coronet Avenue

## SITE LAYOUT



**4633 A & B  
CORONET AVE.**  
Site Plan



**BISHARD HOMES**

# 4633 B Coronet

---

## STANDARD FEATURES

### EXTERIOR

- Beautiful Appointed Exterior Features
- Vinyl Windows Low E Glass with grids
- 30 Year Architectural Shingles
- James Hardie 8.5" Color Plus Lap Siding
- Fiberglass Entry Door
- Brick accents/skirt on front elevation (Per Plan)
- Raised Panel Garage Door
- Designer Brand Lighting Fixture Package
- Hose Bibs – Front and Rear
- GFI Protected Outlets – Front and Rear
- Concrete Walkways
- Landscape Design Including Shrubs & Sod
- Brush Finished Concrete Outdoor Living Patio

### INTERIOR

- Interior Floor Plans Designed to Maximize Natural Light
- High Ceilings in Living Area (9' Per Plan)
- Deluxe 42" (Upper) Cabinets
- Maintenance Free Backsplash
- Soft close Dovetail Drawers and Doors
- Quartz Kitchen Countertops w/ Modern Kitchen Sink
- Stainless Steel Appliances
- Free Standing Gas Range & Microwave above
- Shaw Optimum LVP in the Living Area
- Hardwood Oak Treads from 1st- 2nd Floor
- Ceiling Fan in the Living Room
- Gas Fireplace with Mantel and Legs
- Abundant LED Recessed Lighting (Per Plan)
- Smooth Drywall Finish
- Cable Outlets in All Bedrooms and Living Room
- Smart Closet for Whole Home Wi-Fi Connectivity
- Sherwin Williams 2-Toned Paint

### OWNER'S SUITE BATH

- Ceramic Tile Floors
- All Tile Shower with Niche
- Quartz Vanity Countertops w/ Custom Mirrors
- Quality Delta Fixtures & Matching Bath Hardware
- Elongated Toilet
- Frameless Glass Shower Door

### SECONDARY BATHS

- Pedestal Sink w/ Oval Mirror in Powder Room
- Granite Vanity Tops in Secondary Bathrooms
- Ceramic Tile on Floors
- Maintenance Free Fiberglass Bathtub/ Shower Inserts
- Quality Delta Fixtures & Matching Bath Hardware
- Elongated Toilets

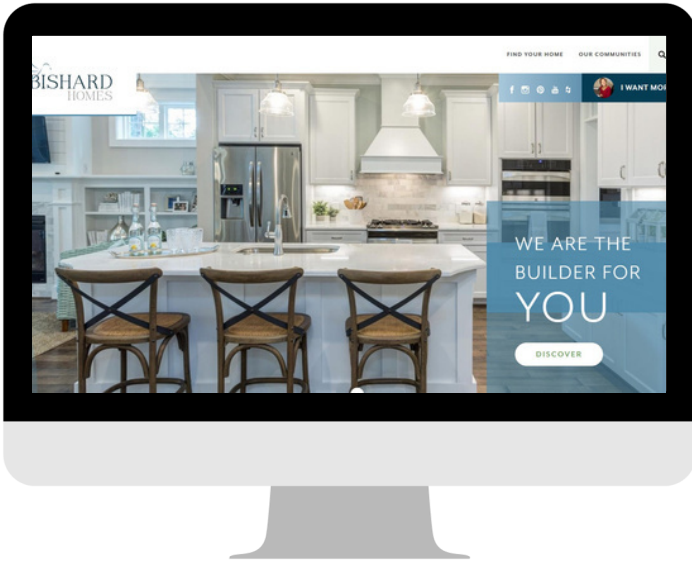
### ENERGY EFFICIENCY

- LED Energy Efficient Bulbs Throughout Home
- Energy Star Appliances
- Energy Efficient Gas Furnace w/ 14 SEER A/C
- Programmable Thermostat w/ Smart PhoneConnectivity
- R-49 Attic Insulation, R-15 Exterior Wall Insulation
- Insulated Concrete Slab Foundation
- Spray Foam Insulation on All Penetrations
- TYPAR House Wrap System
- Energy Efficient Tankless Water Heater

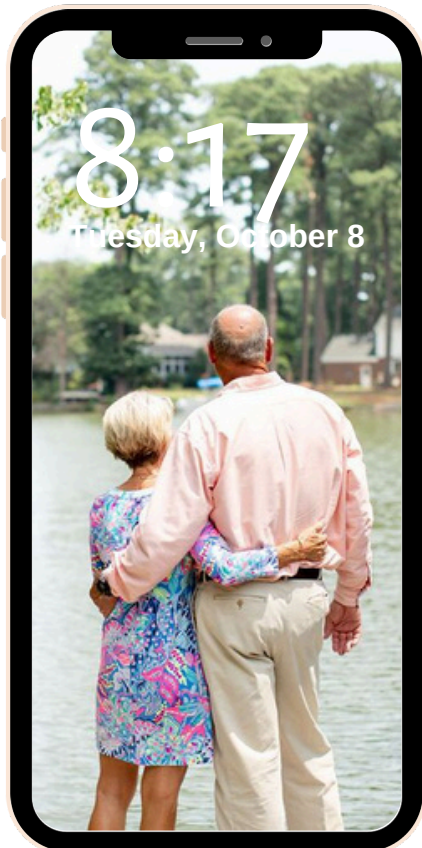
### WARRANTY

- 1 Year Material & Workmanship
- 5 Year Structural Warranty

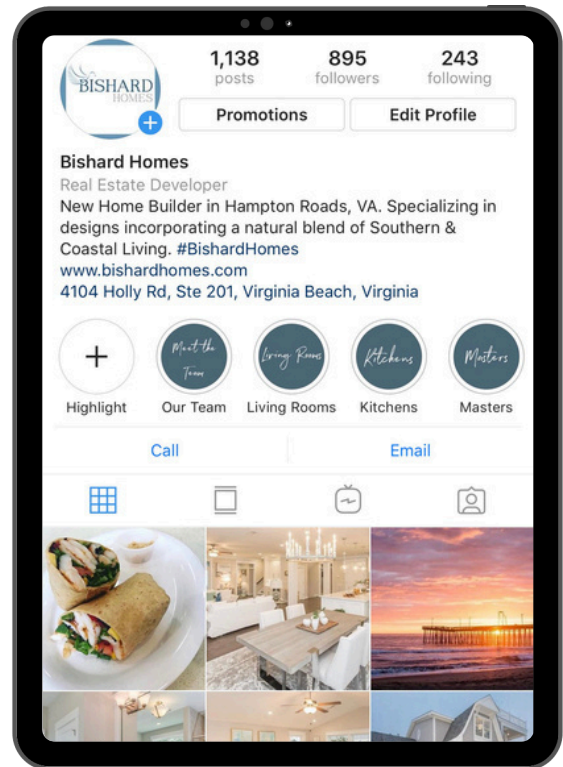
# Questions



FIND US ONLINE AT  
[WWW.BISHARDHOMES.COM](http://WWW.BISHARDHOMES.COM)



FOLLOW ALONG ON  
SOCIAL MEDIA  
@BISHARDHOMES



CALL OUR  
NEW HOME SPECIALISTS  
(757) 703-3367