

DESIGN

LA VILLA - 3115LFB



A



B



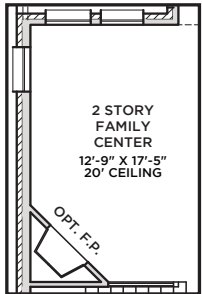
D



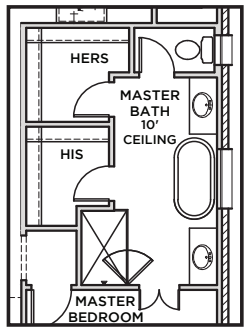
E



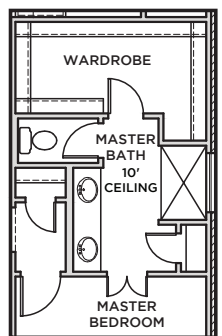
All Product including Architectural Designs, ©2000-2026, Shaddock Homes, LTD., All rights reserved. There may be existing or future design changes made in the floorplans, building products, methods, square footage or designs used in our homes that are not reflected in our information, sales center or in our models. The materials, designs, square footages, features, and amenities shown are based upon current development plans, which are subject to change without notice. No guarantee is made that the designs, square footages, materials, features, and amenities depicted by artist's renderings or otherwise described will be built, or if built, will be of the same type, size or nature as depicted or described. All stone elevations, metal roofs, cast stone door and window headers and solid sawn cedar posts are optional, but available via change order. Front doors will match the specification sheet or chosen door upgrade. Prices and terms subject to change without notice. [REVISION DATE: 6.22.2022](#)



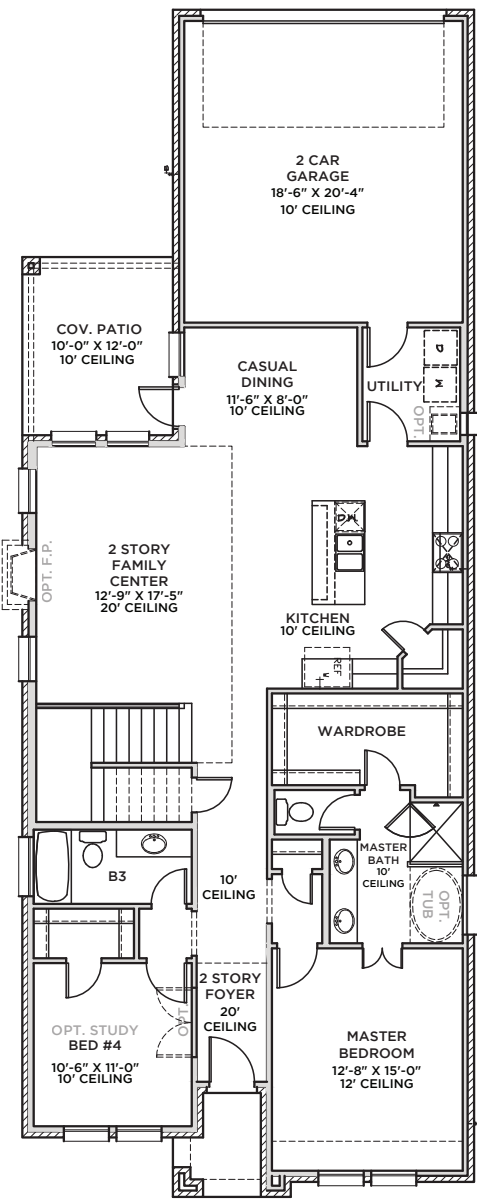
OPTIONAL FIREPLACE



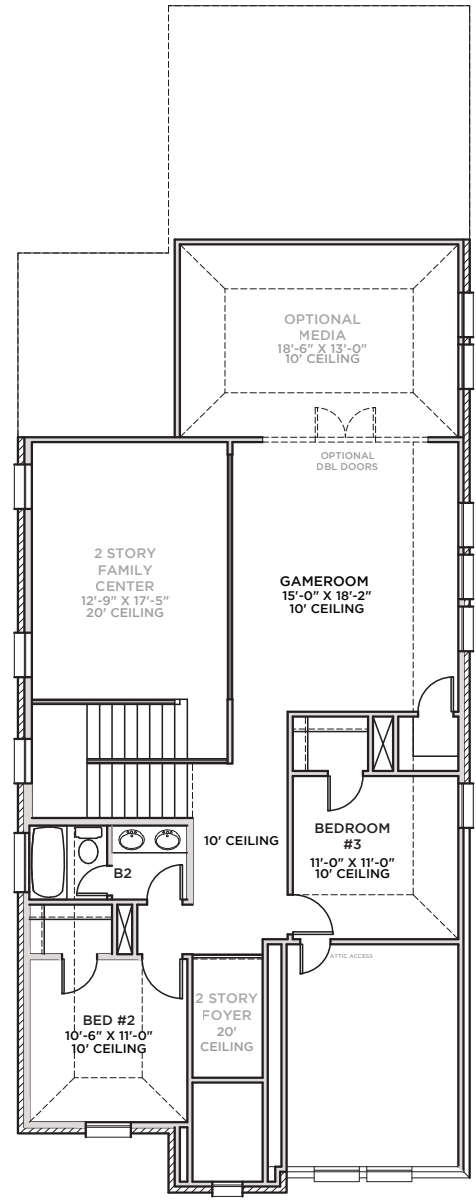
OPTIONAL MASTER BATH HIS/HERS



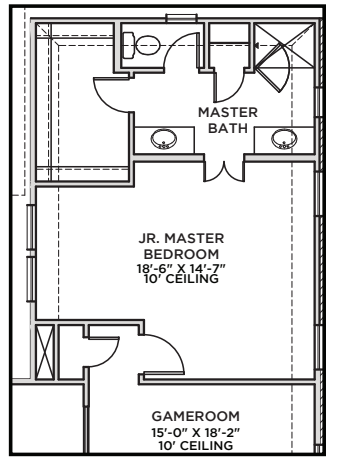
OPTIONAL MASTER LUXURY SHOWER



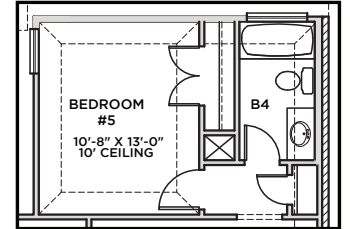
FIRST FLOOR



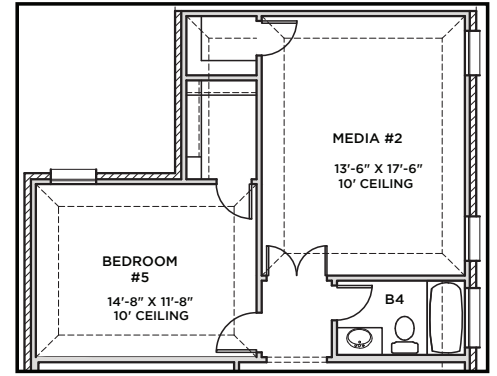
SECOND FLOOR



OPTIONAL JUNIOR MASTER IN LIEU OF MEDIA OPTION



BR5/BR4 OPTION



BR5/BR4/MEDIA 2 OPTION

LA VILLA
3115 (6.22.22)

	S.F.T
First Floor	1603
Second Floor	831
Total Living Area	2434
2 Car Garage	422
Covered Patio	120
Covered Porch	36
Total Area	3012
Options	
Junior Master	477
Media Room	261
Bed 5/Bath 4	261
Media 2/Bed 5/Bath 4	598