



# ENCLAVE AT CORDELIA

---

*Fairfield, CA*

**SEENO HOMES**  
SINCE 1938

# Site Map

Enclave at Cordelia



## Legend

**Adley**

± 1,860 Sq. Ft. | 1 Story  
4 Beds | 3 Baths  
2 Car Garage

**Barton**

± 2,876 Sq. Ft. | 2 Story  
4 Beds | 2.5 Baths  
2 Car Garage

**Curran**

± 3,079 Sq. Ft. | 2 Story  
5 Beds | 3 Baths  
2 Car Garage

**Drake**

± 3,415 Sq. Ft. | 2 Story  
5 Beds | 3.5 Baths  
2 Car Garage

Seeno Homes is an Equal Housing Opportunity builder. Features, specifications, plans, elevations, locations, materials, prices, terms and conditions and other information are subject to change without notice or obligations. All offers are subject to final contract terms. Standard and optional specifications vary per plan type. All square footage is approximate. Not all features are available in all plans. All renderings, maps, displays and handouts are for illustration purposes only and may not accurately depict the actual condition of the item being represented. See our Sales Representative for details. Seecon Realty, Inc. CalDRE#01970735



# Included Features

Enclave at Cordelia

## DECORATIVE FEATURES

- 9' Ceiling Heights
- 8' Door Heights
- Satin Nickel Door Hardware Throughout
- Wood Stained Handrails with Painted Square Ballusters
- Undermount Bathroom Sinks
- Dublin Precast Fireplace Surround
- Two Tone Paint Throughout
- Rounded Sheetrock Corners
- 5 1/4" Decorative Baseboards Throughout

## SLEEK & SOPHISTICATED KITCHENS

- Large Kitchen Island with Ample Space for Entertaining
- Granite Slab Counter Tops at Kitchen with 1 1/2" Edge
- Undermount Kitchen Sink with Pull Down Faucet
- Stainless Steel Kitchen Appliance Package
- 2 USB Ports in Kitchen

## LUXURIOUS PRIMARY SUITES

- Spacious Bedrooms with Tray Ceilings
- Ceiling Fan Pre-Wire
- Dual Bath Vanities with Solid Surface Countertops
- Semi-Frameless Glass Shower Enclosure
- Solid Surface Shower Surrounds
- Generous Walk-In Closet with Wood Shelves

## ENERGY EFFICIENCY

- Solar Panels Included in Purchase Price of Home
- Garage Prepped for Electric Vehicle Charging Station
- Heat Pump Water Heater
- LED Lighting Throughout
- Vacancy Sensing Lighting at Bathrooms
- Automatic Humidity Sensing Bathroom Fans
- Dryer stubbed for Gas and Electric Hookup
- Multizoned Air Conditioning System
- Dual Glazed Vinyl Framed Windows and Sliding Glass Doors
- Energy Efficient Cool Roof System
- Water Efficient Front Yard Landscaping with Automatic Sprinkler System

Seeno Homes is an Equal Housing Opportunity builder. Features, specifications, plans, elevations, locations, materials, prices, terms and conditions and other information are subject to change without notice or obligations. All offers are subject to final contract terms. Standard and optional specifications vary per plan type. All square footage is approximate. Not all features are available in all plans. All renderings, maps, displays and handouts are for illustration purposes only and may not accurately depict the actual condition of the item being represented. See our Sales Representative for details. Seecon Realty, Inc. CalDRE#01970735



# Adley

Enclave at Cordelia

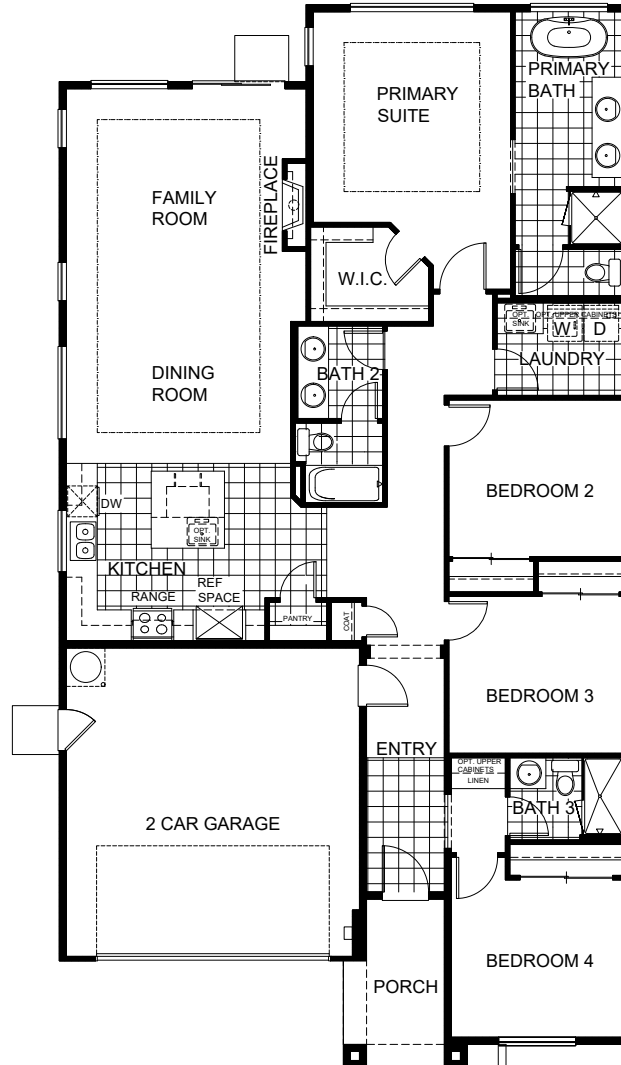
1,860  
Sq. Ft.

4  
Beds

3  
Baths

2  
Car Garage

1  
Story



Elevation A



Elevation B



Elevation C

Seeno Homes is an Equal Housing Opportunity builder. Features, specifications, plans, elevations, locations, materials, prices, terms and conditions and other information are subject to change without notice or obligations. All offers are subject to final contract terms. Standard and optional specifications vary per plan type. All square footage is approximate. Not all features are available in all plans. All renderings, maps, displays and handouts are for illustration purposes only and may not accurately depict the actual condition of the item being represented. See our Sales Representative for details. Seecon Realty, Inc. CalDRE#01970735



# Barton

Enclave at Cordelia

2,876

Sq. Ft.

4

Beds

2.5

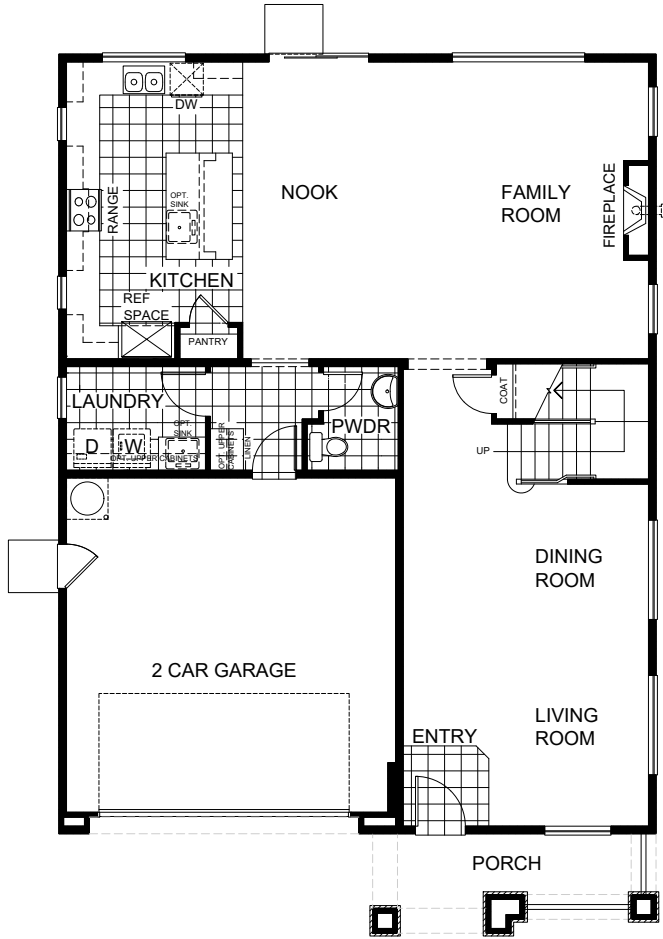
Baths

2

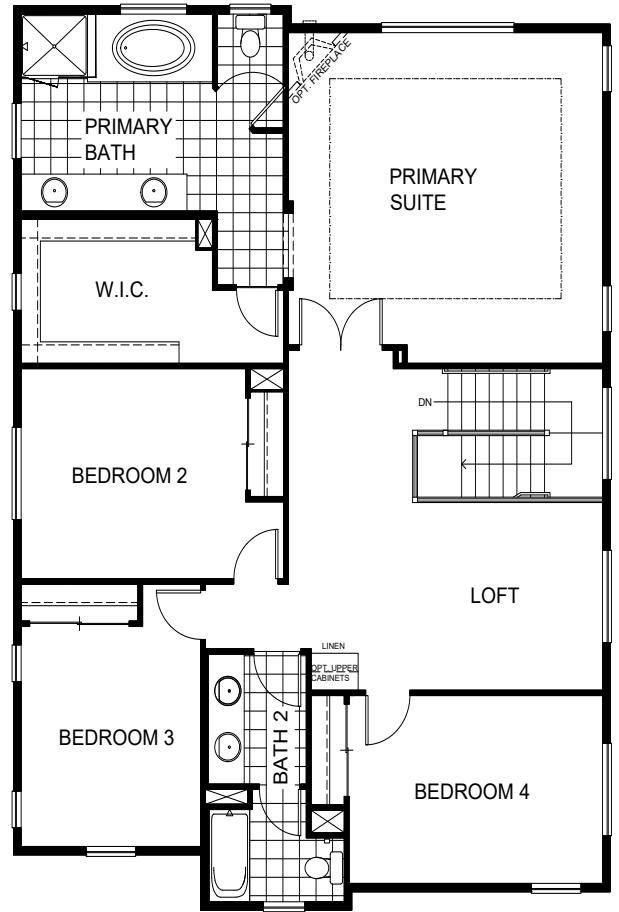
Car Garage

2

Story



First Floor



Second Floor



Elevation A



Elevation B



Elevation C

Seeno Homes is an Equal Housing Opportunity builder. Features, specifications, plans, elevations, locations, materials, prices, terms and conditions and other information are subject to change without notice or obligations. All offers are subject to final contract terms. Standard and optional specifications vary per plan type. All square footage is approximate. Not all features are available in all plans. All renderings, maps, displays and handouts are for illustration purposes only and may not accurately depict the actual condition of the item being represented. See our Sales Representative for details. Seecon Realty, Inc. CalDRE#01970735



# Curran

Enclave at Cordelia

3,079

Sq. Ft.

5

Beds

3

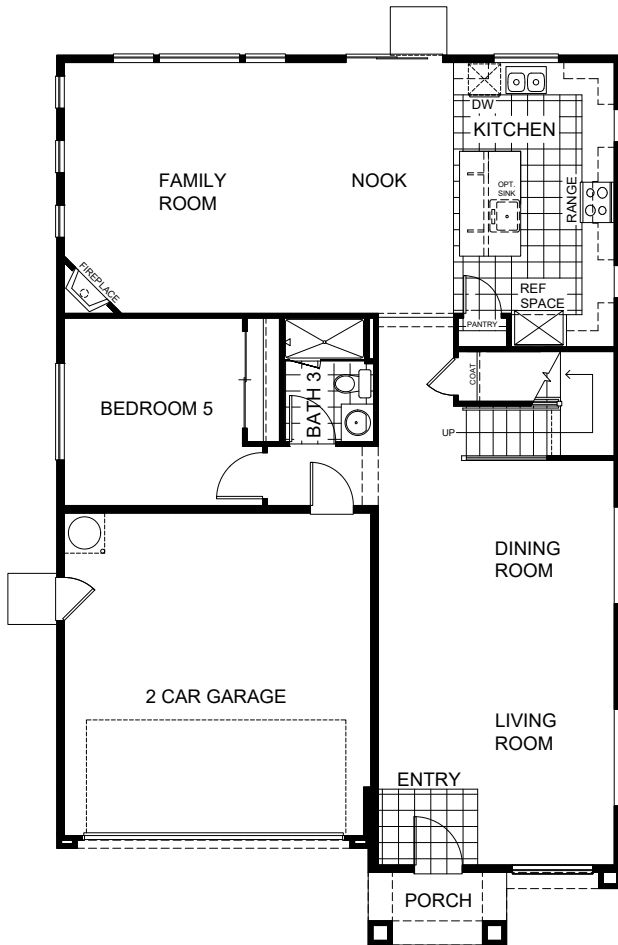
Baths

2

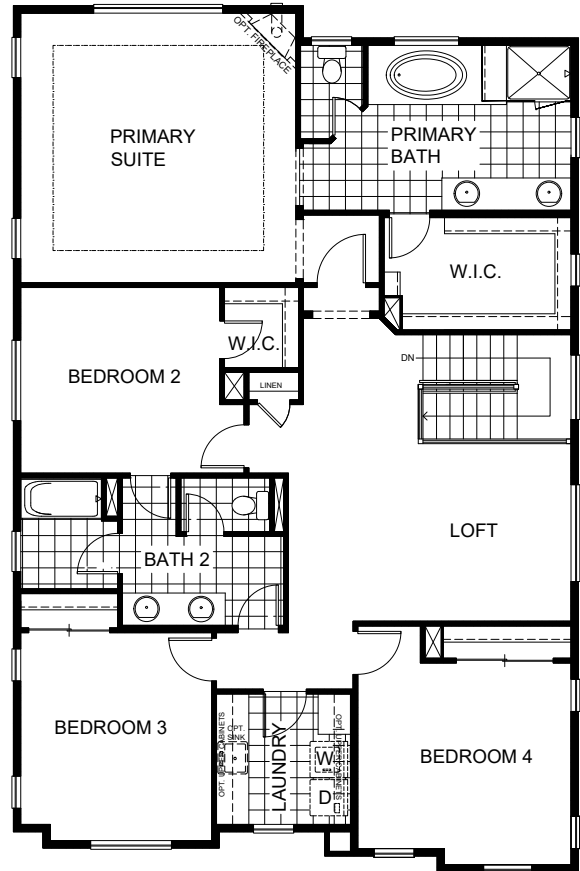
Car Garage

2

Story



First Floor



Second Floor



Elevation A



Elevation B



Elevation C

Seeno Homes is an Equal Housing Opportunity builder. Features, specifications, plans, elevations, locations, materials, prices, terms and conditions and other information are subject to change without notice or obligations. All offers are subject to final contract terms. Standard and optional specifications vary per plan type. All square footage is approximate. Not all features are available in all plans. All renderings, maps, displays and handouts are for illustration purposes only and may not accurately depict the actual condition of the item being represented. See our Sales Representative for details. Seecon Realty, Inc. CalDRE#01970735



# Drake

Enclave at Cordelia

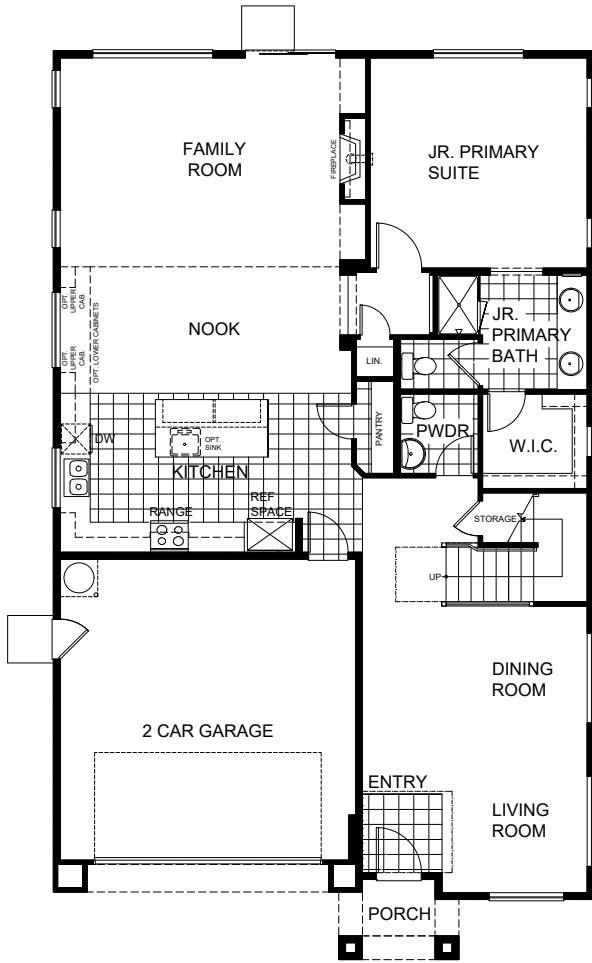
**3,415**  
Sq. Ft.

**5**  
Beds

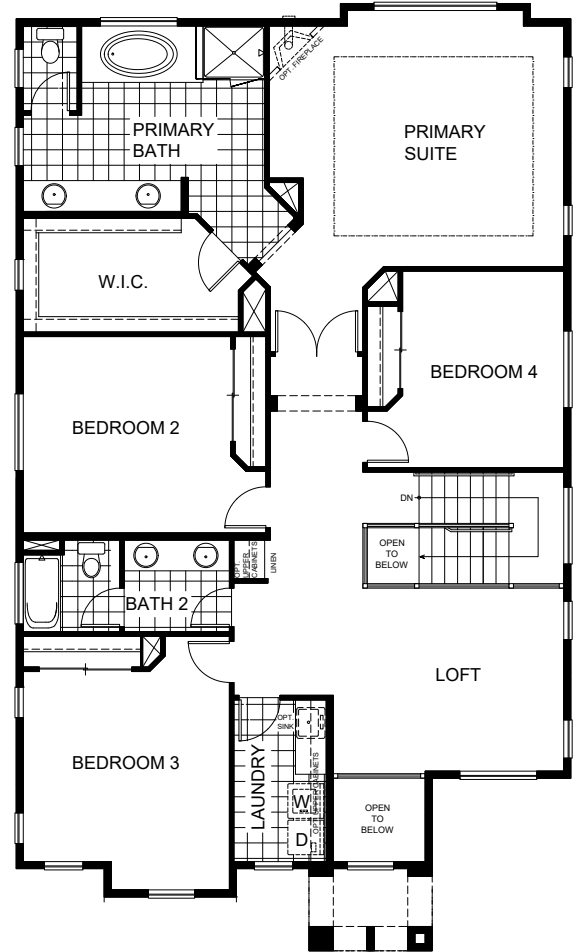
**3.5**  
Baths

**2**  
Car Garage

**2**  
Story



**First Floor**



**Second Floor**



Elevation A



Elevation B



Elevation C

Seeno Homes is an Equal Housing Opportunity builder. Features, specifications, plans, elevations, locations, materials, prices, terms and conditions and other information are subject to change without notice or obligations. All offers are subject to final contract terms. Standard and optional specifications vary per plan type. All square footage is approximate. Not all features are available in all plans. All renderings, maps, displays and handouts are for illustration purposes only and may not accurately depict the actual condition of the item being represented. See our Sales Representative for details. Seecon Realty, Inc. CalDRE#01970735



# Enclave at Cordelia

**Sales Office:**  
507 Yarrow Drive  
Fairfield, CA 94534

(707) 389-4094 | [SeenoHomes.com](http://SeenoHomes.com)  
[enclave@seeconrealty.com](mailto:enclave@seeconrealty.com)

